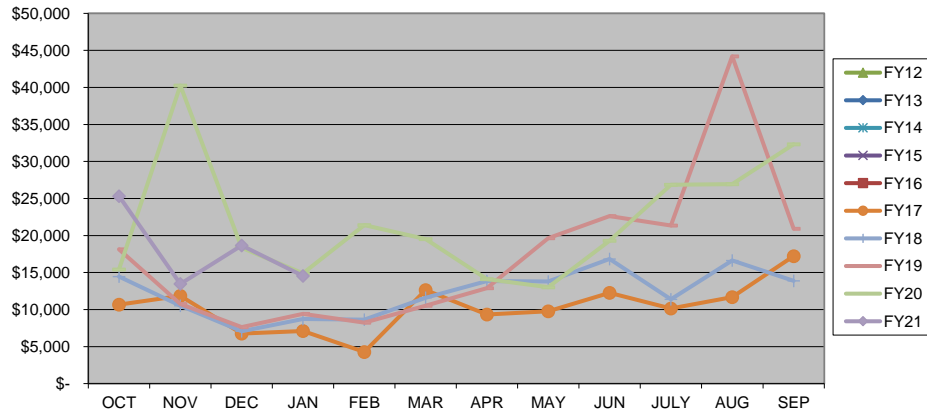


## CITY OF WARRENSBURG LODGING TAX TEN YEAR COMPARISON



	FY12	FY13	FY14	FY15	FY16	FY17	FY18	FY19	FY20	FY21	CHANGE	%	
OCT						\$ 10,664.28	\$ 14,468.77	\$ 18,136.08	\$ 15,413.84	\$ 25,326.19	\$ 9,912.35	64.31%	OCT
NOV						\$ 11,856.62	\$ 10,528.83	\$ 10,744.89	\$ 40,257.33	\$ 13,459.83	\$(26,797.50)	-66.57%	NOV
DEC						\$ 6,761.43	\$ 7,065.61	\$ 7,629.16	\$ 18,335.22	\$ 18,653.37	\$ 318.15	1.74%	DEC
JAN						\$ 7,100.05	\$ 8,711.87	\$ 9,409.07	\$ 14,881.91	\$ 14,549.56	\$ (332.35)	-2.23%	JAN
FEB						\$ 4,274.36	\$ 8,630.16	\$ 8,230.30	\$ 21,406.86				FEB
MAR						\$ 12,622.11	\$ 11,598.22	\$ 10,533.92	\$ 19,520.74				MAR
APR						\$ 9,345.76	\$ 13,836.05	\$ 12,894.11	\$ 14,101.18				APR
MAY						\$ 9,755.36	\$ 13,793.79	\$ 19,644.72	\$ 13,024.45				MAY
JUN						\$ 12,252.02	\$ 16,832.61	\$ 22,628.16	\$ 19,296.86				JUN
JULY						\$ 10,131.03	\$ 11,403.53	\$ 21,351.50	\$ 26,857.44				JULY
AUG						\$ 11,683.88	\$ 16,616.52	\$ 44,208.66	\$ 26,943.77				AUG
SEP						\$ 17,223.77	\$ 13,882.14	\$ 20,927.52	\$ 32,315.05				SEP
<b>TOTAL</b>						<b>\$123,670.67</b>	<b>\$147,368.10</b>	<b>\$206,338.09</b>	<b>\$262,354.65</b>	<b>\$ 71,988.95</b>	<b>\$(16,899.35)</b>	<b>-19.01%</b>	<b>TOTAL</b>

**LODGING TAX TEN YEAR FISCAL**



**LODGING TAX TAXES RECEIVED**

