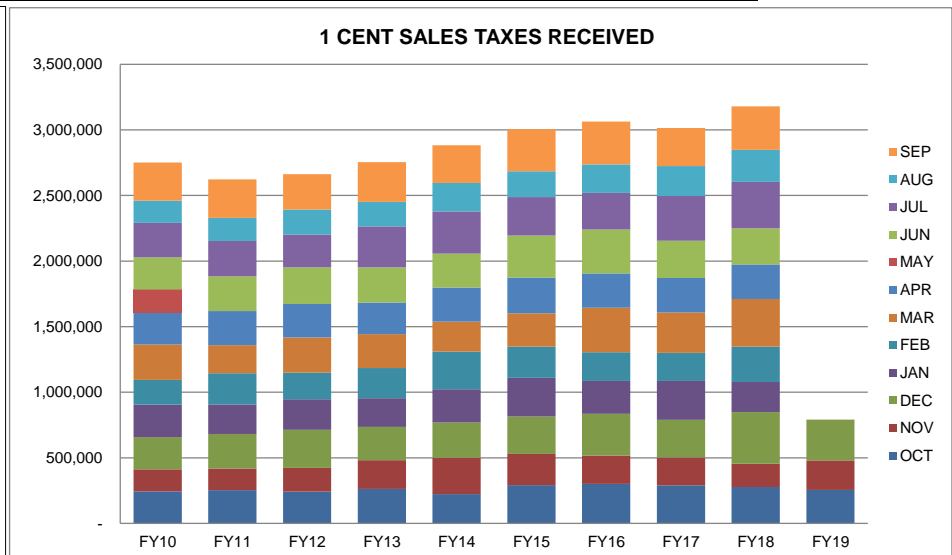
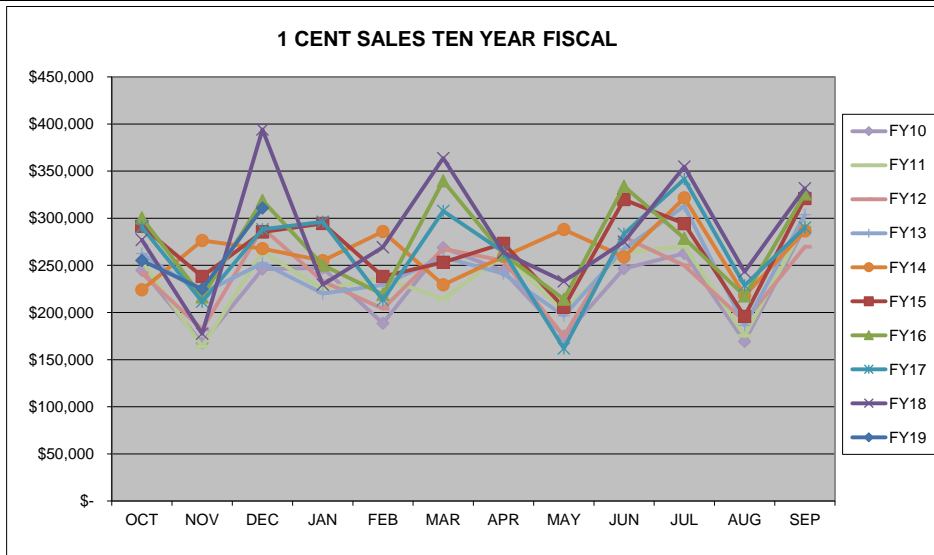


CITY OF WARRENSBURG *1 CENT SALES TEN YEAR COMPARISON



	FY10	FY11	FY12	FY13	FY14	FY15	FY16	FY17	FY18	FY19	CHANGE	%	
OCT	\$ 244,688.22	\$ 254,148.70	\$ 241,663.14	\$ 262,395.96	\$ 223,965.81	\$ 291,309.52	\$ 300,352.02	\$ 290,432.91	\$ 277,035.30	\$ 255,230.99	\$ (21,804.31)	-7.87%	OCT
NOV	\$ 167,652.30	\$ 163,749.90	\$ 182,051.90	\$ 220,033.60	\$ 276,423.19	\$ 238,145.41	\$ 216,601.32	\$ 211,424.44	\$ 177,540.63	\$ 224,863.87	\$ 47,323.24	26.65%	NOV
DEC	\$ 246,027.94	\$ 264,186.78	\$ 289,597.56	\$ 252,544.84	\$ 267,827.30	\$ 285,374.94	\$ 319,019.14	\$ 288,310.36	\$ 394,139.78	\$ 310,872.00	\$ (83,267.78)	-21.13%	DEC
JAN	\$ 247,262.22	\$ 224,848.38	\$ 233,058.35	\$ 220,025.84	\$ 255,013.31	\$ 294,539.60	\$ 250,241.32	\$ 296,111.08	\$ 229,462.01				JAN
FEB	\$ 188,509.33	\$ 237,079.09	\$ 203,878.27	\$ 229,347.32	\$ 285,929.58	\$ 238,250.72	\$ 219,096.17	\$ 213,215.16	\$ 269,203.71				FEB
MAR	\$ 268,934.91	\$ 214,440.24	\$ 267,574.99	\$ 258,746.18	\$ 229,349.91	\$ 253,219.95	\$ 339,600.73	\$ 307,664.21	\$ 363,836.04				MAR
APR	\$ 243,953.28	\$ 260,881.61	\$ 254,868.76	\$ 241,309.70	\$ 259,439.94	\$ 273,340.61	\$ 261,812.55	\$ 264,157.95	\$ 263,457.37				APR
MAY	\$ 174,752.45	\$ 201,427.79	\$ 174,935.23	\$ 196,492.75	\$ 288,104.51	\$ 205,450.09	\$ 214,086.04	\$ 161,834.43	\$ 233,179.18				MAY
JUN	\$ 246,524.10	\$ 263,698.84	\$ 279,936.42	\$ 267,505.55	\$ 258,915.52	\$ 319,728.73	\$ 334,068.59	\$ 283,382.60	\$ 275,050.27				JUN
JUL	\$ 262,779.87	\$ 270,375.74	\$ 249,964.18	\$ 312,893.75	\$ 321,626.49	\$ 294,159.03	\$ 278,860.86	\$ 341,411.81	\$ 354,778.37				JUL
AUG	\$ 169,230.56	\$ 175,320.92	\$ 190,637.98	\$ 186,223.91	\$ 218,005.63	\$ 195,901.22	\$ 217,673.85	\$ 228,583.89	\$ 243,192.76				AUG
SEP	\$ 290,555.54	\$ 294,001.64	\$ 269,733.79	\$ 303,619.30	\$ 286,494.71	\$ 320,967.17	\$ 325,860.80	\$ 289,997.56	\$ 331,796.69				SEP
TOTAL	\$ 2,750,870.72	\$ 2,824,159.63	\$ 2,837,900.57	\$ 2,951,138.70	\$ 3,171,095.90	\$ 3,210,386.99	\$ 3,277,273.39	\$ 3,176,526.40	\$ 3,412,672.11	\$ 790,966.86	\$ (57,748.85)	-6.80%	TOTAL

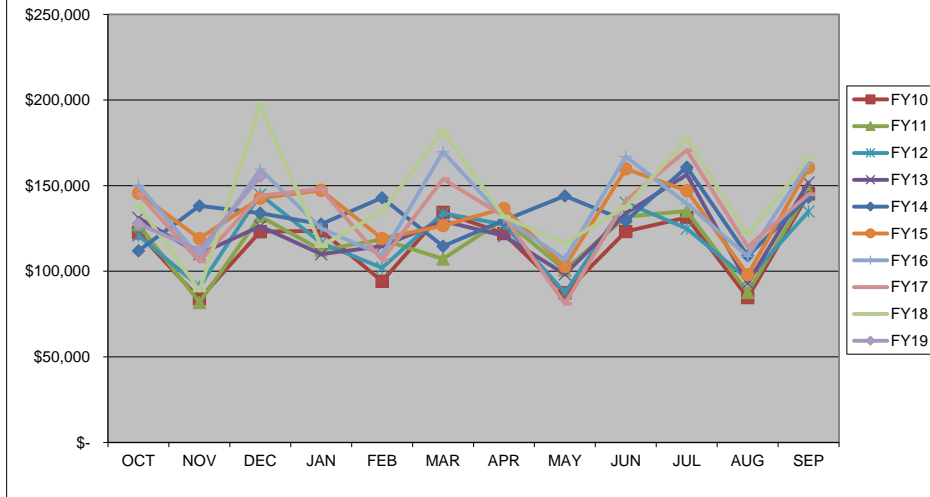


CITY OF WARRENSBURG *1/2 CENT SALES TEN YEAR COMPARISON

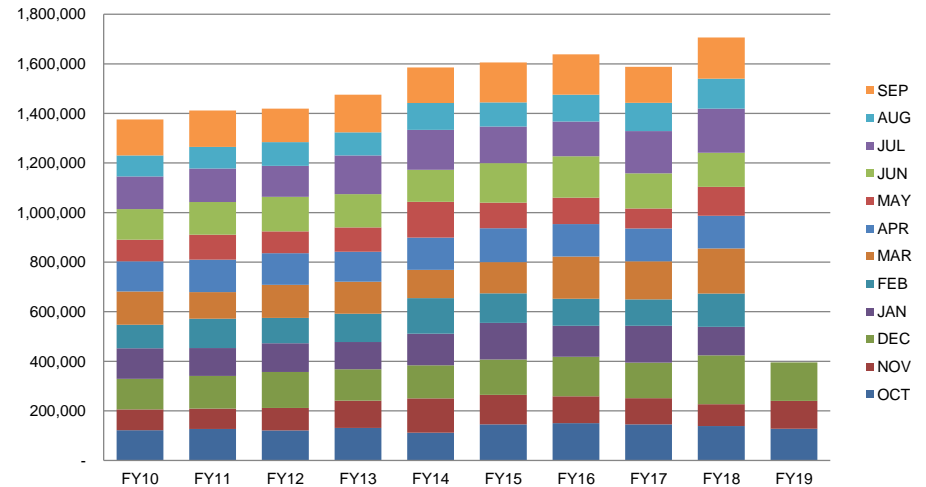


	FY10	FY11	FY12	FY13	FY14	FY15	FY16	FY17	FY18	FY19	CHANGE	%	
OCT	\$ 122,344.20	\$ 127,074.32	\$ 120,831.68	\$ 131,197.84	\$ 111,983.09	\$ 145,654.68	\$ 150,176.28	\$ 145,216.65	\$ 138,517.76	\$ 127,615.00	\$ (10,902.76)	-7.87%	OCT
NOV	\$ 83,826.21	\$ 81,875.07	\$ 91,025.98	\$ 110,016.80	\$ 138,211.48	\$ 119,072.69	\$ 108,300.84	\$ 105,712.23	\$ 88,769.99	\$ 112,432.06	\$ 23,662.07	26.66%	NOV
DEC	\$ 123,068.24	\$ 132,093.33	\$ 144,798.86	\$ 126,272.31	\$ 133,913.51	\$ 142,687.52	\$ 159,509.74	\$ 144,155.35	\$ 197,069.71	\$ 155,435.62	\$ (41,634.09)	-21.13%	DEC
JAN	\$ 123,630.95	\$ 112,424.01	\$ 116,528.87	\$ 110,013.12	\$ 127,506.60	\$ 147,270.08	\$ 125,120.62	\$ 148,055.79	\$ 114,731.10				JAN
FEB	\$ 94,254.53	\$ 118,539.57	\$ 101,939.20	\$ 114,673.58	\$ 142,964.83	\$ 119,125.33	\$ 109,548.28	\$ 106,607.60	\$ 134,601.87				FEB
MAR	\$ 134,387.35	\$ 107,220.13	\$ 133,791.41	\$ 129,373.00	\$ 114,669.70	\$ 126,605.69	\$ 169,800.49	\$ 153,829.54	\$ 181,918.09				MAR
APR	\$ 121,976.81	\$ 130,434.75	\$ 127,424.88	\$ 120,648.44	\$ 129,717.13	\$ 136,670.24	\$ 130,906.51	\$ 132,079.16	\$ 131,728.51				APR
MAY	\$ 87,376.39	\$ 100,714.08	\$ 87,466.47	\$ 98,246.54	\$ 144,052.54	\$ 102,725.05	\$ 107,034.41	\$ 80,917.38	\$ 116,589.61				MAY
JUN	\$ 123,262.09	\$ 131,831.01	\$ 139,953.69	\$ 133,753.04	\$ 129,451.06	\$ 159,864.25	\$ 167,028.61	\$ 141,291.28	\$ 137,525.10				JUN
JUL	\$ 131,390.12	\$ 135,187.91	\$ 124,982.01	\$ 156,445.40	\$ 160,813.34	\$ 147,079.69	\$ 139,430.42	\$ 170,695.02	\$ 177,389.18				JUL
AUG	\$ 84,615.30	\$ 87,660.41	\$ 95,319.04	\$ 93,111.83	\$ 109,002.66	\$ 97,950.67	\$ 108,836.84	\$ 114,281.02	\$ 121,596.73				AUG
SEP	\$ 145,277.87	\$ 147,000.95	\$ 134,867.11	\$ 151,804.17	\$ 143,247.57	\$ 160,483.47	\$ 162,930.65	\$ 144,998.94	\$ 165,898.45				SEP
TOTAL	\$ 1,375,410.06	\$ 1,412,055.54	\$ 1,418,929.20	\$ 1,475,556.07	\$ 1,585,533.51	\$ 1,605,189.36	\$ 1,638,623.69	\$ 1,587,839.96	\$ 1,706,336.10	\$ 395,482.68	\$ (28,874.78)	-6.80%	TOTAL

1/2 CENT SALES FIVE YEAR FISCAL



1/2 CENT SALES TAXES RECEIVED

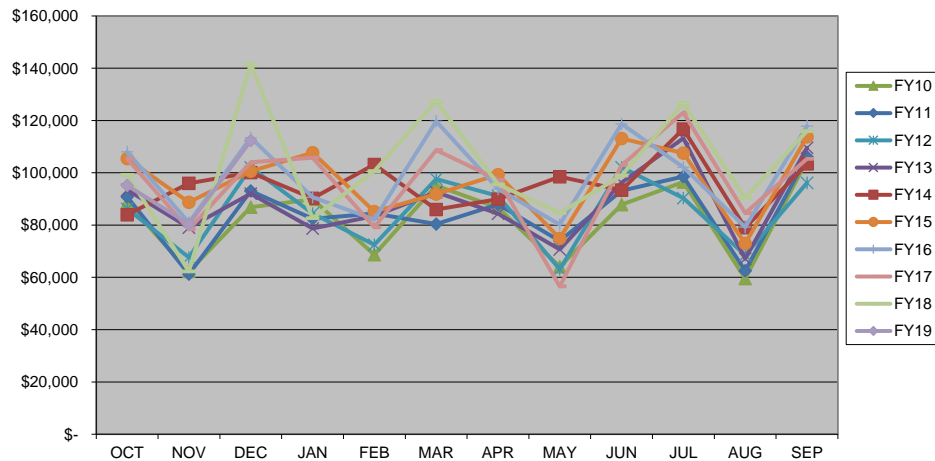


CITY OF WARRENSBURG *3/8 CENT SALES TEN YEAR COMPARISON

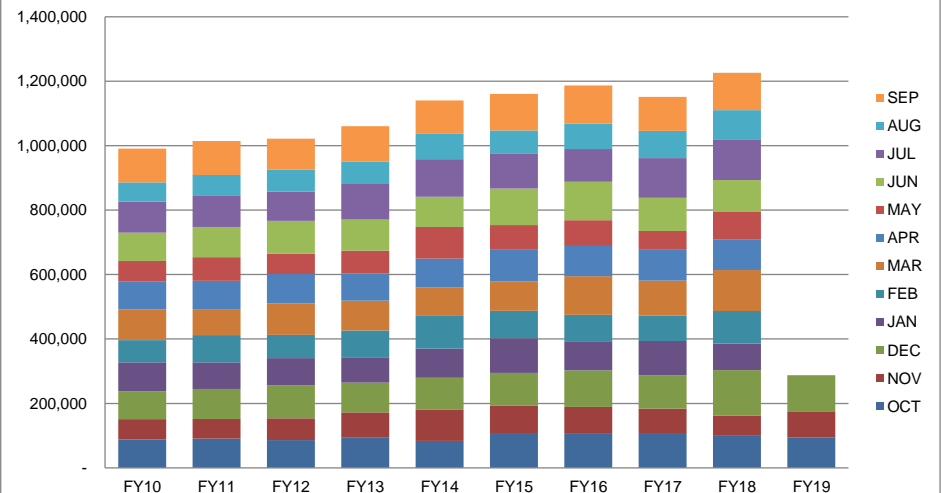


	FY10	FY11	FY12	FY13	FY14	FY15	FY16	FY17	FY18	FY19	CHANGE	%	
OCT	\$ 88,625.20	\$ 90,814.07	\$ 86,189.33	\$ 93,465.69	\$ 83,936.23	\$ 105,422.83	\$ 107,993.82	\$ 105,377.24	\$ 99,242.10	\$ 95,187.99	\$ (4,054.11)	-4.09%	OCT
NOV	\$ 62,313.32	\$ 61,217.93	\$ 67,637.85	\$ 78,992.03	\$ 95,992.27	\$ 88,737.16	\$ 80,964.79	\$ 78,354.36	\$ 62,317.52	\$ 80,365.11	\$ 18,047.59	28.96%	NOV
DEC	\$ 86,832.31	\$ 93,118.23	\$ 102,057.84	\$ 91,997.57	\$ 100,103.74	\$ 100,560.75	\$ 113,408.87	\$ 104,098.29	\$ 141,643.09	\$ 112,288.75	\$ (29,354.34)	-20.72%	DEC
JAN	\$ 89,836.99	\$ 82,384.34	\$ 84,469.04	\$ 78,689.20	\$ 90,220.18	\$ 107,726.80	\$ 90,666.80	\$ 105,762.86	\$ 82,643.20				JAN
FEB	\$ 68,711.34	\$ 84,465.41	\$ 72,484.04	\$ 83,486.85	\$ 103,219.69	\$ 85,148.34	\$ 82,150.10	\$ 79,204.48	\$ 100,682.66				FEB
MAR	\$ 95,064.03	\$ 80,414.64	\$ 97,609.07	\$ 92,583.73	\$ 85,991.73	\$ 91,879.55	\$ 119,713.66	\$ 108,704.25	\$ 127,429.96				MAR
APR	\$ 86,603.59	\$ 87,948.83	\$ 91,179.39	\$ 84,330.44	\$ 89,923.49	\$ 99,288.84	\$ 93,822.27	\$ 97,331.52	\$ 95,571.47				APR
MAY	\$ 64,069.49	\$ 73,916.39	\$ 63,071.14	\$ 70,707.30	\$ 98,496.17	\$ 74,867.23	\$ 80,275.00	\$ 56,525.77	\$ 84,712.82				MAY
JUN	\$ 87,815.16	\$ 93,178.89	\$ 102,100.92	\$ 96,244.12	\$ 93,367.55	\$ 113,081.19	\$ 118,727.93	\$ 102,978.01	\$ 98,968.83				JUN
JUL	\$ 96,476.96	\$ 98,612.33	\$ 90,305.51	\$ 113,223.39	\$ 116,755.95	\$ 107,530.80	\$ 102,127.07	\$ 123,032.59	\$ 126,639.46				JUL
AUG	\$ 59,521.27	\$ 62,578.40	\$ 68,553.90	\$ 67,134.73	\$ 79,002.18	\$ 72,948.55	\$ 79,230.19	\$ 84,598.76	\$ 90,330.78				AUG
SEP	\$ 104,850.25	\$ 106,112.31	\$ 96,171.11	\$ 109,587.86	\$ 103,401.28	\$ 113,775.48	\$ 117,872.86	\$ 105,337.95	\$ 115,936.67				SEP
TOTAL	\$ 990,719.91	\$ 1,014,761.77	\$ 1,021,829.14	\$ 1,060,442.91	\$ 1,140,410.46	\$ 1,160,967.52	\$ 1,186,953.36	\$ 1,151,306.08	\$ 1,226,118.56	\$ 287,841.85	\$ (15,360.86)	-5.07%	TOTAL

3/8 CENT SALES TEN YEAR FISCAL



3/8 CENT SALES TAXES RECEIVED

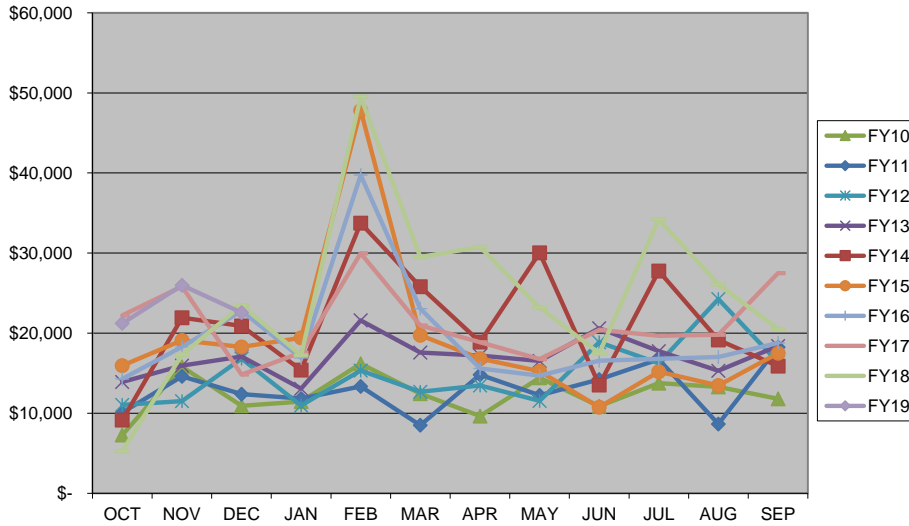


CITY OF WARRENSBURG 1 CENT USE TEN YEAR COMPARISON

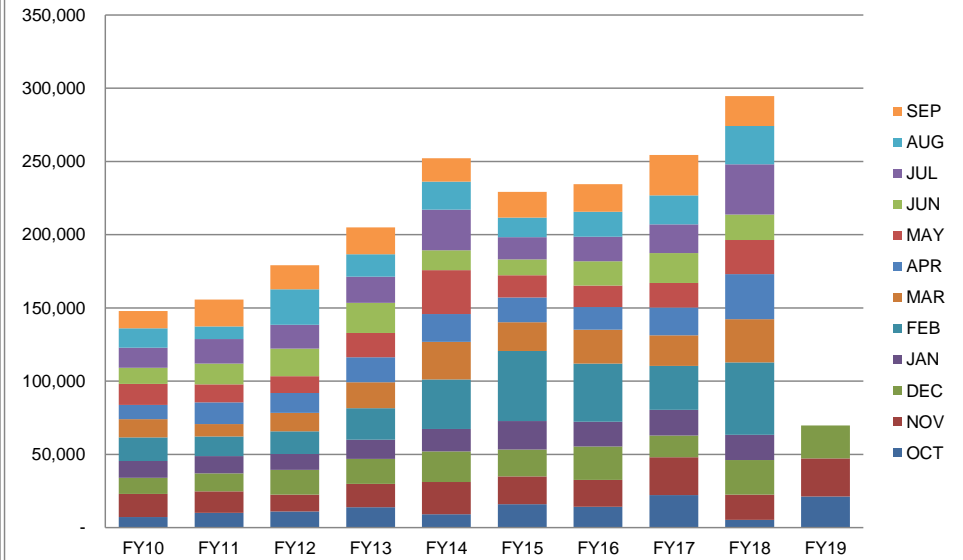


	FY10	FY11	FY12	FY13	FY14	FY15	FY16	FY17	FY18	FY19	CHANGE	%	
OCT	\$ 7,284.72	\$ 10,074.41	\$ 11,056.06	\$ 13,900.06	\$ 9,143.52	\$ 15,961.68	\$ 14,297.21	\$ 22,204.92	\$ 5,257.26	\$ 21,217.49	\$ 15,960.23	303.58%	OCT
NOV	\$ 15,791.50	\$ 14,619.51	\$ 11,525.73	\$ 15,955.74	\$ 21,934.11	\$ 19,083.78	\$ 18,292.66	\$ 25,830.18	\$ 17,327.71	\$ 25,983.82	\$ 8,656.11	49.96%	NOV
DEC	\$ 10,923.11	\$ 12,375.09	\$ 16,808.54	\$ 17,075.51	\$ 20,893.01	\$ 18,277.23	\$ 22,768.53	\$ 14,826.63	\$ 23,477.96	\$ 22,575.35	\$ (902.61)	-3.84%	DEC
JAN	\$ 11,441.77	\$ 11,830.11	\$ 10,964.18	\$ 13,072.57	\$ 15,384.22	\$ 19,412.67	\$ 16,908.80	\$ 17,578.20	\$ 17,230.49				JAN
FEB	\$ 16,186.67	\$ 13,341.86	\$ 15,326.27	\$ 21,592.46	\$ 33,738.68	\$ 47,815.98	\$ 39,738.90	\$ 29,977.33	\$ 49,539.04				FEB
MAR	\$ 12,454.43	\$ 8,503.10	\$ 12,687.35	\$ 17,579.43	\$ 25,803.07	\$ 19,731.46	\$ 23,052.54	\$ 20,953.42	\$ 29,507.54				MAR
APR	\$ 9,645.73	\$ 14,813.61	\$ 13,464.09	\$ 17,199.63	\$ 18,897.80	\$ 16,811.78	\$ 15,592.06	\$ 18,874.61	\$ 30,779.50				APR
MAY	\$ 14,444.00	\$ 12,252.52	\$ 11,539.63	\$ 16,520.19	\$ 30,031.20	\$ 15,257.19	\$ 14,694.11	\$ 16,758.71	\$ 23,208.09				MAY
JUN	\$ 10,886.29	\$ 14,223.58	\$ 18,872.40	\$ 20,623.89	\$ 13,515.76	\$ 10,750.07	\$ 16,553.81	\$ 20,400.29	\$ 17,490.23				JUN
JUL	\$ 13,748.10	\$ 16,727.42	\$ 16,234.34	\$ 17,766.36	\$ 27,751.05	\$ 15,201.88	\$ 16,793.68	\$ 19,675.12	\$ 34,222.43				JUL
AUG	\$ 13,285.08	\$ 8,667.13	\$ 24,256.14	\$ 15,313.50	\$ 19,162.04	\$ 13,467.18	\$ 17,022.58	\$ 19,792.30	\$ 26,103.60				AUG
SEP	\$ 11,802.90	\$ 18,239.91	\$ 16,342.89	\$ 18,390.66	\$ 15,902.92	\$ 17,496.69	\$ 18,779.33	\$ 27,510.52	\$ 20,514.14				SEP
TOTAL	\$147,894.30	\$155,668.25	\$179,077.62	\$204,990.00	\$252,157.38	\$229,267.59	\$234,494.21	\$254,382.23	\$294,657.99	\$ 69,776.66	\$ 23,713.73	51.48%	TOTAL

1 CENT USE TEN YEAR FISCAL



1 CENT USE TAXES RECEIVED

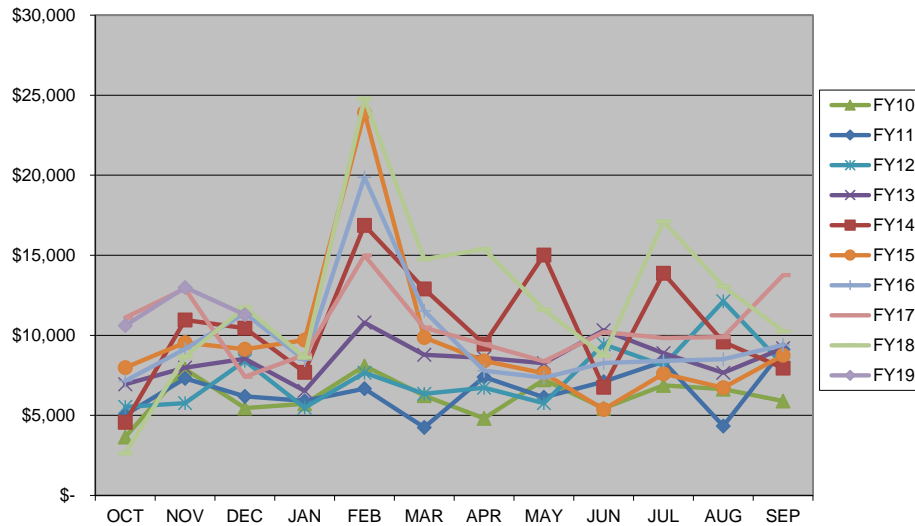


CITY OF WARRENSBURG 1/2 CENT USE TEN YEAR COMPARISON

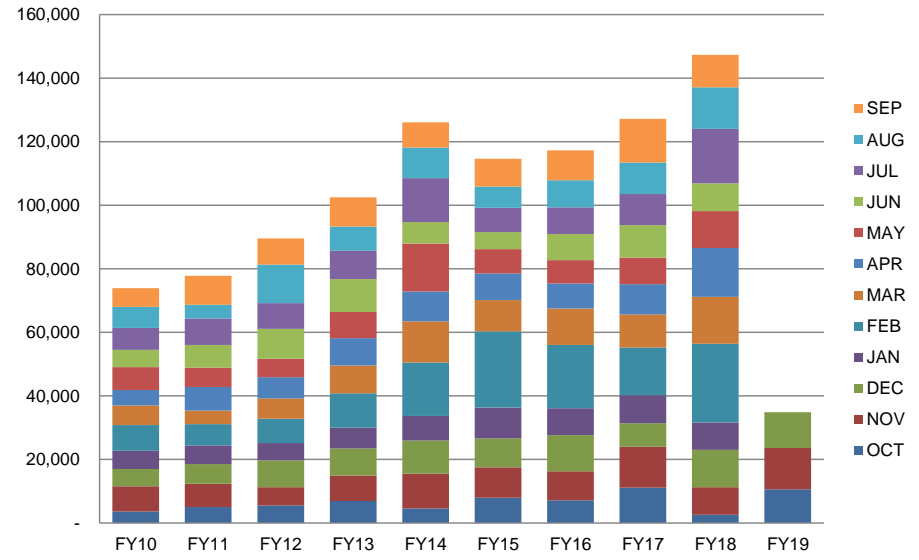


	FY10	FY11	FY12	FY13	FY14	FY15	FY16	FY17	FY18	FY19	CHANGE	%	
OCT	\$ 3,641.69	\$ 5,036.27	\$ 5,527.00	\$ 6,948.75	\$ 4,570.92	\$ 7,982.34	\$ 7,149.94	\$ 11,104.54	\$ 2,629.12	\$ 10,610.74	\$ 7,981.62	303.59%	OCT
NOV	\$ 7,894.29	\$ 7,308.41	\$ 5,761.80	\$ 7,976.39	\$ 10,965.03	\$ 9,543.68	\$ 9,148.04	\$ 12,917.51	\$ 8,665.48	\$ 12,994.35	\$ 4,328.87	49.96%	NOV
DEC	\$ 5,460.54	\$ 6,186.40	\$ 8,402.72	\$ 8,536.18	\$ 10,444.57	\$ 9,140.33	\$ 11,386.40	\$ 7,414.70	\$ 11,741.19	\$ 11,289.79	\$ (451.40)	-3.84%	DEC
JAN	\$ 5,719.83	\$ 5,913.96	\$ 5,481.08	\$ 6,535.08	\$ 7,690.69	\$ 9,708.15	\$ 8,455.98	\$ 8,790.75	\$ 8,616.86				JAN
FEB	\$ 8,091.84	\$ 6,669.70	\$ 7,661.71	\$ 10,794.23	\$ 16,872.50	\$ 23,912.47	\$ 19,873.18	\$ 14,991.48	\$ 24,774.16				FEB
MAR	\$ 6,226.06	\$ 4,250.77	\$ 6,342.50	\$ 8,788.09	\$ 12,903.96	\$ 9,867.58	\$ 11,528.43	\$ 10,478.67	\$ 14,756.54				MAR
APR	\$ 4,821.98	\$ 7,405.44	\$ 6,730.80	\$ 8,598.23	\$ 9,450.67	\$ 8,407.47	\$ 7,797.49	\$ 9,439.07	\$ 15,392.63				APR
MAY	\$ 7,220.66	\$ 6,125.13	\$ 5,768.75	\$ 8,258.57	\$ 15,018.42	\$ 7,630.03	\$ 7,348.43	\$ 8,380.93	\$ 11,606.22				MAY
JUN	\$ 5,442.13	\$ 7,110.47	\$ 9,434.45	\$ 10,310.04	\$ 6,759.15	\$ 5,376.05	\$ 8,278.46	\$ 10,202.06	\$ 8,746.75				JUN
JUL	\$ 6,872.78	\$ 8,362.16	\$ 8,115.67	\$ 8,881.54	\$ 13,878.12	\$ 7,602.37	\$ 8,398.42	\$ 9,839.40	\$ 17,114.42				JUL
AUG	\$ 6,641.31	\$ 4,332.77	\$ 12,125.82	\$ 7,655.33	\$ 9,582.82	\$ 6,734.85	\$ 8,512.89	\$ 9,898.00	\$ 13,054.25				AUG
SEP	\$ 5,900.36	\$ 9,118.27	\$ 8,169.93	\$ 9,193.63	\$ 7,952.95	\$ 8,749.98	\$ 9,391.42	\$ 13,757.84	\$ 10,259.00				SEP
TOTAL	\$ 73,933.47	\$ 77,819.75	\$89,522.23	\$102,476.06	\$126,089.80	\$114,655.30	\$117,269.08	\$127,214.95	\$147,356.62	\$ 34,894.88	\$ 11,859.09	51.48%	TOTAL

1/2 CENT TEN YEAR FISCAL



1/2 CENT USE TAXES RECEIVED

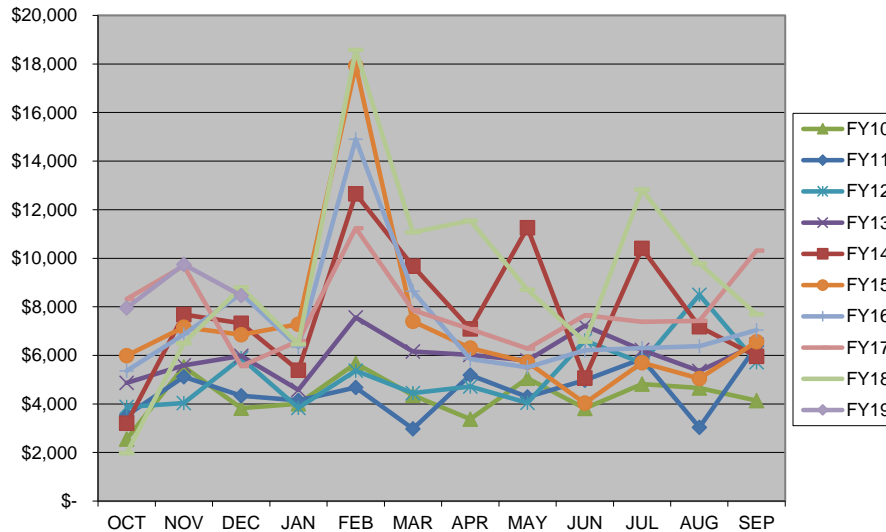


CITY OF WARRENSBURG 3/8 CENT USE TEN YEAR COMPARISON

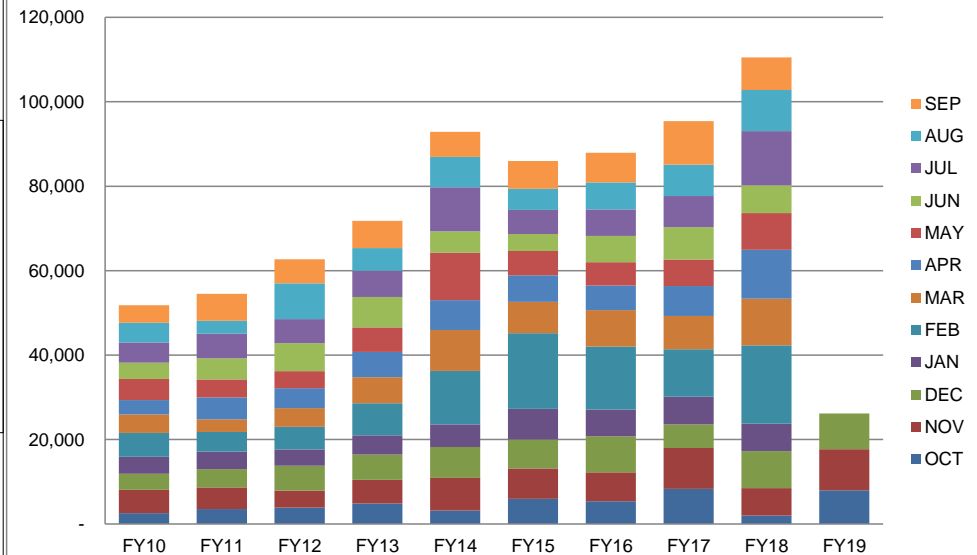


	FY10	FY11	FY12	FY13	FY14	FY15	FY16	FY17	FY18	FY19	CHANGE	%	
OCT	\$ 2,551.34	\$ 3,528.37	\$ 3,872.18	\$ 4,868.24	\$ 3,202.35	\$ 5,986.01	\$ 5,361.79	\$ 8,327.37	\$ 1,971.59	\$ 7,957.06	\$ 5,985.47	303.59%	OCT
NOV	\$ 5,530.68	\$ 5,120.21	\$ 4,036.67	\$ 5,588.20	\$ 7,682.01	\$ 7,156.86	\$ 6,860.18	\$ 9,686.92	\$ 6,498.29	\$ 9,744.54	\$ 3,246.25	49.96%	NOV
DEC	\$ 3,825.62	\$ 4,334.14	\$ 5,886.88	\$ 5,980.38	\$ 7,317.38	\$ 6,854.39	\$ 8,538.73	\$ 5,560.33	\$ 8,804.79	\$ 8,466.29	\$ (338.50)	-3.84%	DEC
JAN	\$ 4,007.27	\$ 4,143.27	\$ 3,840.00	\$ 4,578.42	\$ 5,388.03	\$ 7,280.21	\$ 6,341.20	\$ 6,592.23	\$ 6,461.84				JAN
FEB	\$ 5,669.08	\$ 4,672.74	\$ 5,367.74	\$ 7,562.35	\$ 12,652.80	\$ 17,932.11	\$ 14,903.02	\$ 11,242.20	\$ 18,578.30				FEB
MAR	\$ 4,361.93	\$ 2,978.05	\$ 4,443.51	\$ 6,156.87	\$ 9,676.76	\$ 7,399.76	\$ 8,645.24	\$ 7,858.02	\$ 11,066.02				MAR
APR	\$ 3,378.24	\$ 5,188.19	\$ 4,715.55	\$ 6,023.85	\$ 7,087.12	\$ 6,304.81	\$ 5,847.39	\$ 7,078.42	\$ 11,543.03				APR
MAY	\$ 5,058.74	\$ 4,291.21	\$ 4,041.54	\$ 5,785.89	\$ 11,262.41	\$ 5,721.80	\$ 5,510.63	\$ 6,284.91	\$ 8,703.58				MAY
JUN	\$ 3,812.72	\$ 4,981.54	\$ 6,609.71	\$ 7,223.13	\$ 5,068.72	\$ 4,031.53	\$ 6,208.07	\$ 7,650.59	\$ 6,559.25				JUN
JUL	\$ 4,815.01	\$ 5,858.47	\$ 5,685.78	\$ 6,222.33	\$ 10,407.29	\$ 5,701.06	\$ 6,298.02	\$ 7,378.63	\$ 12,834.21				JUL
AUG	\$ 4,652.85	\$ 3,035.50	\$ 8,495.26	\$ 5,363.27	\$ 7,186.22	\$ 5,050.51	\$ 6,383.87	\$ 7,422.58	\$ 9,789.46				AUG
SEP	\$ 4,133.75	\$ 6,388.19	\$ 5,723.79	\$ 6,440.98	\$ 5,963.97	\$ 6,561.67	\$ 7,042.69	\$ 10,317.09	\$ 7,693.28				SEP
TOTAL	\$51,797.23	\$54,519.88	\$62,718.61	\$71,793.91	\$92,895.06	\$85,980.72	\$87,940.83	\$95,399.29	\$110,503.64	\$ 26,167.89	\$ 8,893.22	51.48%	TOTAL

3/8 CENT USE TEN YEAR FISCAL



3/8 CENT USE TAXES RECEIVED

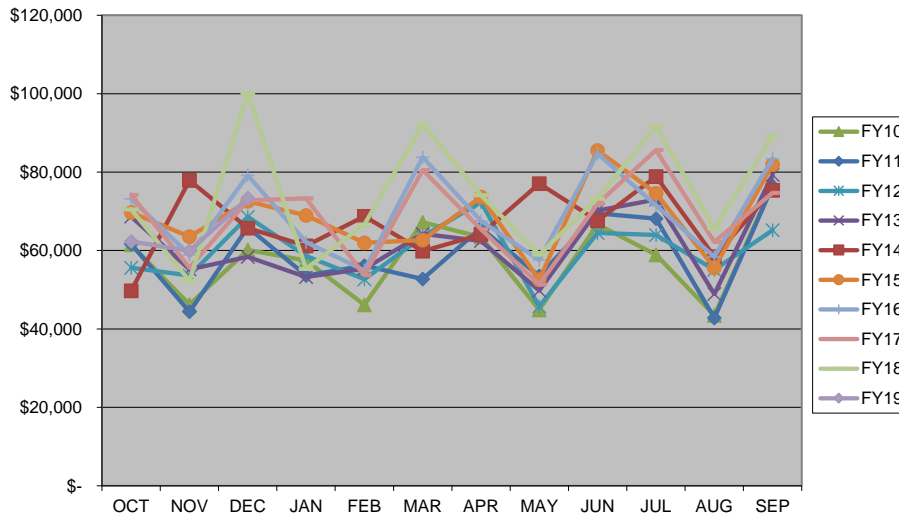


CITY OF WARRENSBURG LAW ENFORCEMENT TEN YEAR COMPARISON

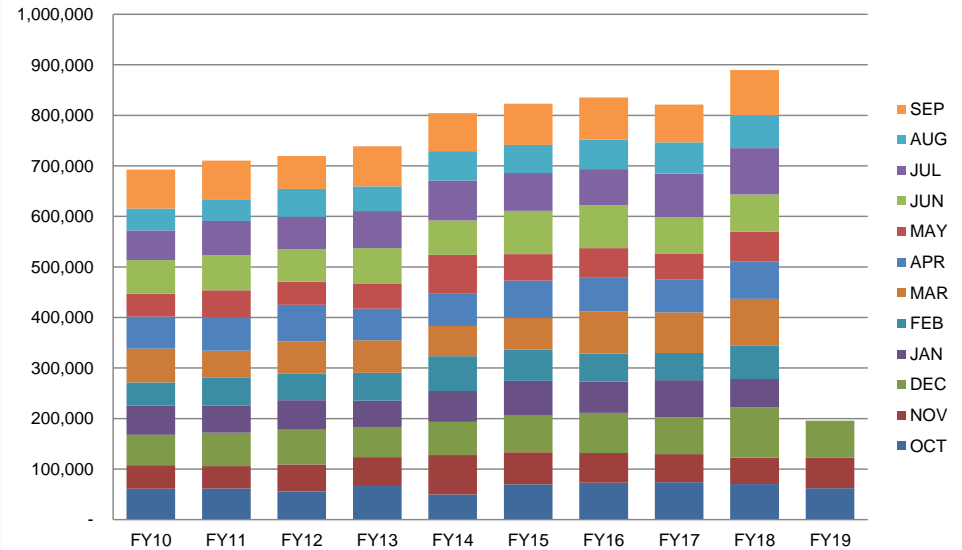


	FY10	FY11	FY12	FY13	FY14	FY15	FY16	FY17	FY18	FY19	CHANGE	%	
OCT	\$ 61,468.01	\$ 61,672.18	\$ 55,646.53	\$ 68,648.72	\$ 49,734.02	\$ 69,740.56	\$ 73,177.08	\$ 74,169.96	\$ 70,492.57	\$ 62,332.51	\$ (8,160.06)	-11.58%	OCT
NOV	\$ 46,188.96	\$ 44,374.74	\$ 53,633.60	\$ 55,212.92	\$ 77,887.02	\$ 63,532.50	\$ 58,894.22	\$ 55,595.27	\$ 52,280.94	\$ 59,911.16	\$ 7,630.22	14.59%	NOV
DEC	\$ 60,138.98	\$ 65,879.76	\$ 68,590.40	\$ 58,370.64	\$ 65,709.45	\$ 72,535.63	\$ 79,184.98	\$ 72,791.45	\$ 100,119.52	\$ 73,344.67	\$ (26,774.85)	-26.74%	DEC
JAN	\$ 57,451.03	\$ 53,637.12	\$ 58,621.47	\$ 53,269.01	\$ 61,204.89	\$ 68,952.60	\$ 62,138.58	\$ 73,293.44	\$ 55,325.38				JAN
FEB	\$ 46,142.33	\$ 56,141.64	\$ 52,660.81	\$ 55,330.96	\$ 68,707.24	\$ 61,982.30	\$ 54,930.81	\$ 53,749.36	\$ 66,673.84				FEB
MAR	\$ 67,169.02	\$ 52,714.05	\$ 63,526.08	\$ 64,281.82	\$ 59,850.51	\$ 62,673.10	\$ 83,803.95	\$ 80,502.75	\$ 92,142.87				MAR
APR	\$ 63,428.59	\$ 65,714.41	\$ 72,355.32	\$ 62,409.29	\$ 64,069.15	\$ 73,651.81	\$ 67,565.62	\$ 65,452.50	\$ 74,151.28				APR
MAY	\$ 44,859.76	\$ 53,515.81	\$ 45,732.81	\$ 49,808.18	\$ 77,051.67	\$ 52,566.73	\$ 57,599.71	\$ 51,343.45	\$ 58,958.71				MAY
JUN	\$ 66,636.85	\$ 69,490.44	\$ 64,469.03	\$ 70,162.15	\$ 67,583.98	\$ 85,528.20	\$ 84,711.15	\$ 71,905.69	\$ 73,249.53				JUN
JUL	\$ 58,891.66	\$ 68,118.27	\$ 63,953.45	\$ 73,007.64	\$ 78,859.70	\$ 74,596.87	\$ 71,509.19	\$ 85,628.15	\$ 91,680.94				JUL
AUG	\$ 43,454.26	\$ 42,789.13	\$ 55,074.31	\$ 48,900.29	\$ 58,419.92	\$ 55,602.98	\$ 58,375.82	\$ 62,219.29	\$ 65,662.95				AUG
SEP	\$ 76,761.01	\$ 76,405.13	\$ 65,179.62	\$ 79,282.17	\$ 75,385.36	\$ 81,916.16	\$ 83,389.29	\$ 74,742.70	\$ 89,108.85				SEP
TOTAL	\$692,590.46	\$710,452.68	\$719,443.43	\$738,683.79	\$804,462.91	\$823,279.44	\$835,280.40	\$821,394.01	\$889,847.38	\$ 195,588.34	\$ (27,304.69)	-12.25%	TOTAL

LAW ENFORCEMENT TEN YEAR FISCAL



LAW ENFORCEMENT SALES TAXES RECEIVED

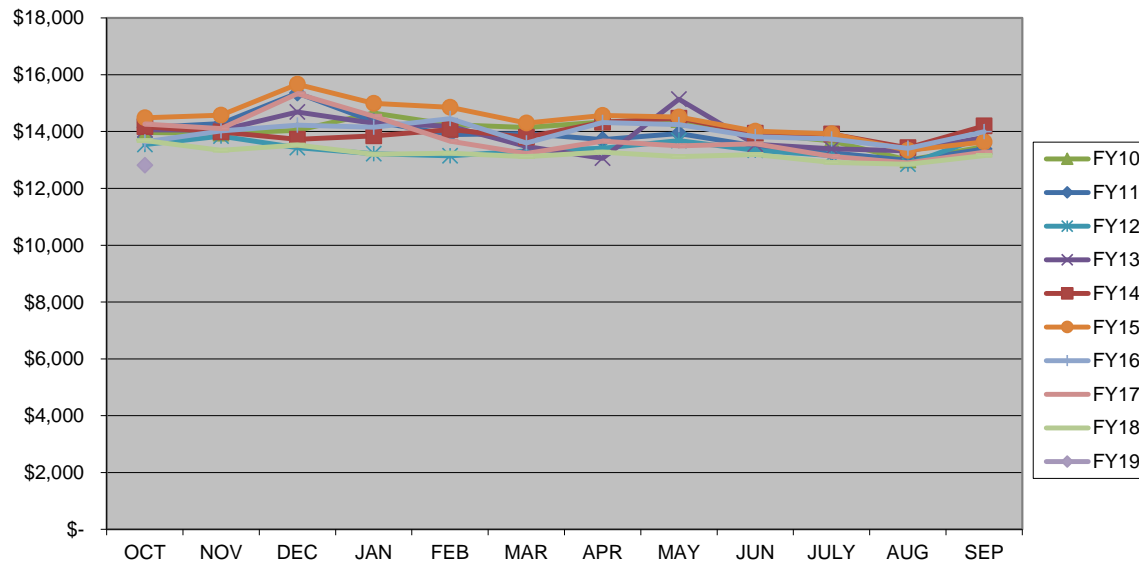


CITY OF WARRENSBURG CABLE FRANCHISE TEN YEAR COMPARISON

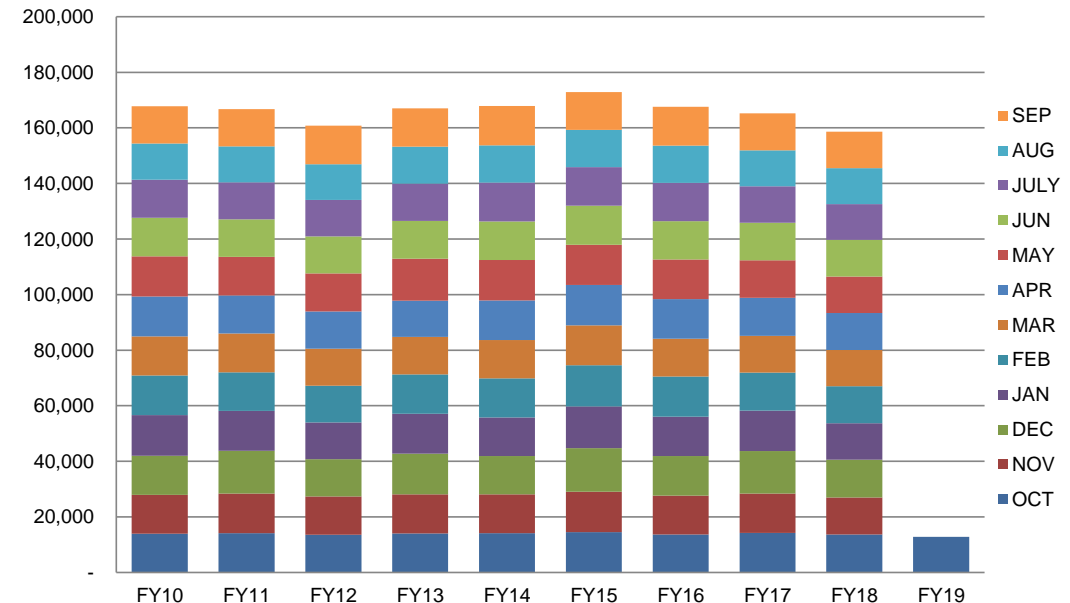


	FY10	FY11	FY12	FY13	FY14	FY15	FY16	FY17	FY18	FY19	CHANGE	%	
OCT	\$ 13,967.05	\$ 14,144.68	\$ 13,540.07	\$ 14,056.30	\$ 14,173.34	\$ 14,486.50	\$ 13,633.86	\$ 14,267.71	\$ 13,684.52	\$ 12,816.31	\$ (868.21)	-6.34%	OCT
NOV	\$ 13,942.22	\$ 14,282.89	\$ 13,838.13	\$ 14,052.56	\$ 13,990.66	\$ 14,581.21	\$ 14,019.43	\$ 14,109.73	\$ 13,335.78				NOV
DEC	\$ 14,044.68	\$ 15,352.81	\$ 13,435.75	\$ 14,689.49	\$ 13,730.16	\$ 15,664.28	\$ 14,230.54	\$ 15,331.57	\$ 13,523.64				DEC
JAN	\$ 14,651.63	\$ 14,351.53	\$ 13,222.48	\$ 14,292.53	\$ 13,844.87	\$ 14,995.49	\$ 14,148.65	\$ 14,536.57	\$ 13,199.31				JAN
FEB	\$ 14,249.08	\$ 13,894.54	\$ 13,146.19	\$ 14,188.53	\$ 14,068.50	\$ 14,852.26	\$ 14,453.64	\$ 13,667.28	\$ 13,241.56				FEB
MAR	\$ 14,139.29	\$ 13,932.17	\$ 13,320.97	\$ 13,475.92	\$ 13,798.92	\$ 14,303.71	\$ 13,595.10	\$ 13,231.47	\$ 13,114.16				MAR
APR	\$ 14,337.97	\$ 13,719.84	\$ 13,415.13	\$ 13,058.68	\$ 14,329.30	\$ 14,564.77	\$ 14,315.92	\$ 13,663.32	\$ 13,275.06				APR
MAY	\$ 14,421.24	\$ 13,931.43	\$ 13,679.06	\$ 15,139.58	\$ 14,469.77	\$ 14,514.60	\$ 14,246.95	\$ 13,493.93	\$ 13,120.98				MAY
JUN	\$ 13,926.30	\$ 13,493.02	\$ 13,337.92	\$ 13,552.95	\$ 13,940.88	\$ 14,012.43	\$ 13,816.55	\$ 13,568.66	\$ 13,188.06				JUN
JULY	\$ 13,675.04	\$ 13,256.76	\$ 13,152.18	\$ 13,392.59	\$ 13,915.15	\$ 13,920.07	\$ 13,739.20	\$ 13,129.97	\$ 12,911.66				JULY
AUG	\$ 12,993.89	\$ 12,984.11	\$ 12,851.60	\$ 13,325.18	\$ 13,427.82	\$ 13,339.91	\$ 13,409.59	\$ 12,899.95	\$ 12,849.99				AUG
SEP	\$ 13,470.85	\$ 13,390.19	\$ 13,816.69	\$ 13,796.27	\$ 14,199.44	\$ 13,638.30	\$ 13,998.85	\$ 13,279.56	\$ 13,154.51				SEP
TOTAL	\$167,819.24	\$166,733.97	\$160,756.17	\$167,020.58	\$167,888.81	\$172,873.53	\$167,608.28	\$165,179.72	\$158,599.23	\$ 12,816.31	\$ (868.21)	-6.34%	TOTAL

CABLE FRANCHISE TEN YEAR FISCAL



CABLE FRANCHISE REVENUE RECEIVED

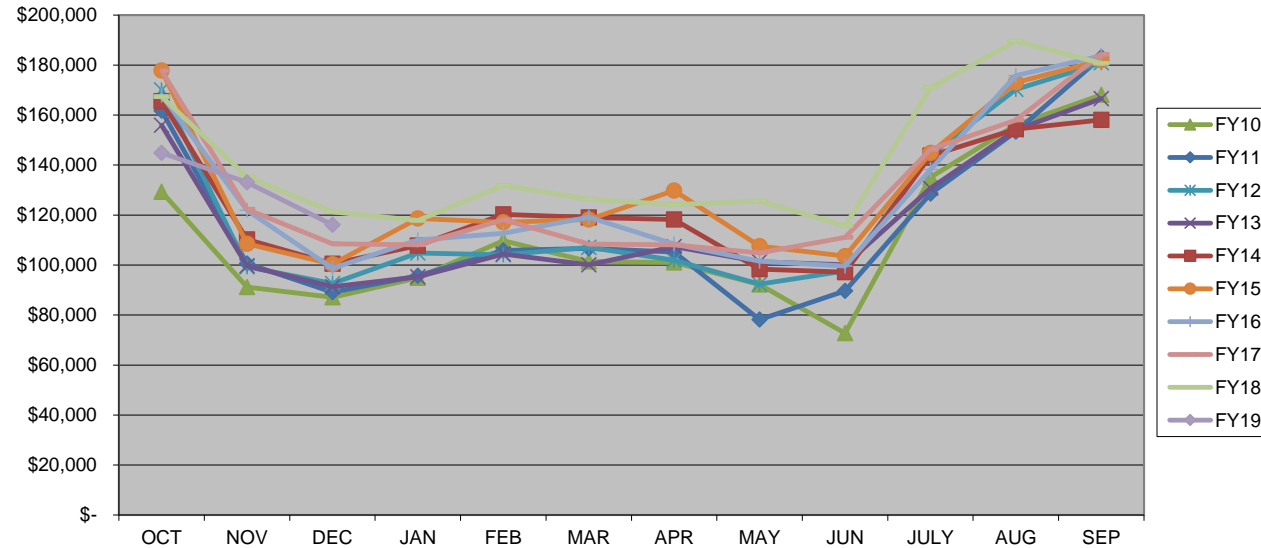


CITY OF WARRENSBURG ELECTRIC FRANCHISE TEN YEAR COMPARISON

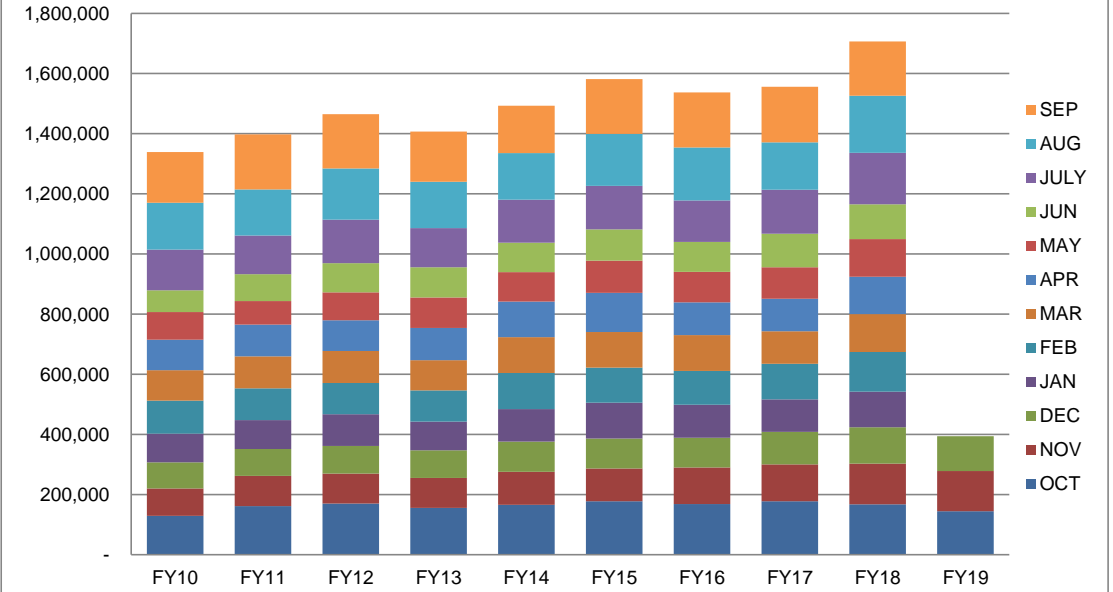


	FY10	FY11	FY12	FY13	FY14	FY15	FY16	FY17	FY18	FY19	CHANGE	%	
OCT	\$ 129,239.74	\$ 161,740.31	\$ 170,081.28	\$ 155,920.66	\$ 165,530.30	\$ 177,814.95	\$ 167,944.36	\$ 177,695.86	\$ 167,434.02	\$ 144,883.08	\$ (22,550.94)	-13.47%	OCT
NOV	\$ 91,157.94	\$ 100,626.60	\$ 99,295.90	\$ 99,683.72	\$ 110,229.30	\$ 108,490.24	\$ 121,910.47	\$ 122,289.37	\$ 135,308.25	\$ 133,096.45	\$ (2,211.80)	-1.63%	NOV
DEC	\$ 87,053.12	\$ 89,162.70	\$ 92,577.75	\$ 91,342.44	\$ 100,515.98	\$ 100,342.52	\$ 98,701.70	\$ 108,536.32	\$ 121,274.30	\$ 116,092.24	\$ (5,182.06)	-4.27%	DEC
JAN	\$ 94,904.81	\$ 95,662.77	\$ 104,808.30	\$ 95,282.07	\$ 107,824.31	\$ 118,681.13	\$ 110,027.73	\$ 108,134.91	\$ 117,857.77				JAN
FEB	\$ 109,730.03	\$ 105,847.25	\$ 104,044.27	\$ 104,389.34	\$ 120,242.36	\$ 117,142.39	\$ 112,710.54	\$ 118,086.17	\$ 131,881.98				FEB
MAR	\$ 101,474.18	\$ 106,623.88	\$ 107,064.18	\$ 100,116.16	\$ 119,096.35	\$ 118,236.01	\$ 119,102.62	\$ 108,417.90	\$ 126,339.61				MAR
APR	\$ 101,052.67	\$ 105,268.32	\$ 101,947.76	\$ 107,355.84	\$ 118,230.59	\$ 129,804.68	\$ 108,421.11	\$ 108,061.44	\$ 124,144.27				APR
MAY	\$ 92,246.49	\$ 78,172.51	\$ 92,355.14	\$ 101,366.60	\$ 98,409.40	\$ 107,624.87	\$ 101,496.71	\$ 104,844.47	\$ 125,587.53				MAY
JUN	\$ 72,713.12	\$ 89,668.48	\$ 97,682.86	\$ 100,138.05	\$ 97,158.65	\$ 103,621.67	\$ 99,601.74	\$ 111,028.65	\$ 115,705.06				JUN
JULY	\$ 135,116.30	\$ 128,528.35	\$ 144,088.76	\$ 130,709.94	\$ 143,697.21	\$ 144,887.03	\$ 138,213.44	\$ 146,313.23	\$ 170,970.67				JULY
AUG	\$ 155,984.25	\$ 153,360.67	\$ 170,292.81	\$ 154,066.41	\$ 154,398.43	\$ 173,036.16	\$ 175,808.06	\$ 157,998.17	\$ 189,625.86				AUG
SEP	\$ 168,079.92	\$ 183,145.58	\$ 180,876.57	\$ 166,603.13	\$ 158,040.87	\$ 181,905.70	\$ 183,748.06	\$ 184,331.49	\$ 180,732.58				SEP
TOTAL	\$1,338,752.57	\$1,397,807.42	\$1,465,115.58	\$1,406,974.36	\$1,493,373.75	\$1,581,587.35	\$1,537,686.54	\$1,555,737.98	\$1,706,861.90	\$ 394,071.77	\$ (29,944.80)	-7.06%	TOTAL

ELECTRIC FRANCHISE TEN YEAR FISCAL



ELECTRIC FRANCHISE REVENUE RECEIVED

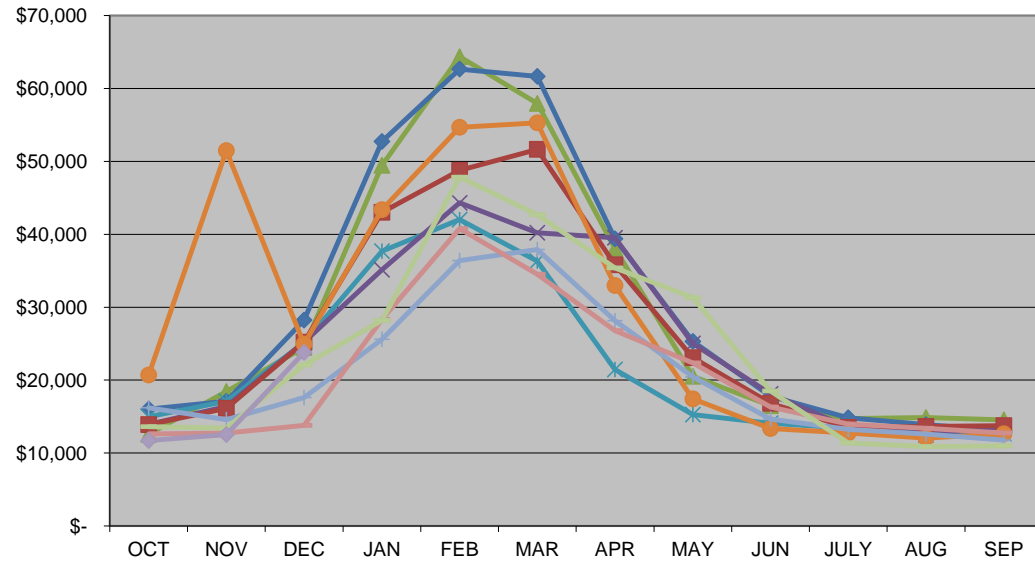


CITY OF WARRENSBURG GAS FRANCHISE TEN YEAR COMPARISON

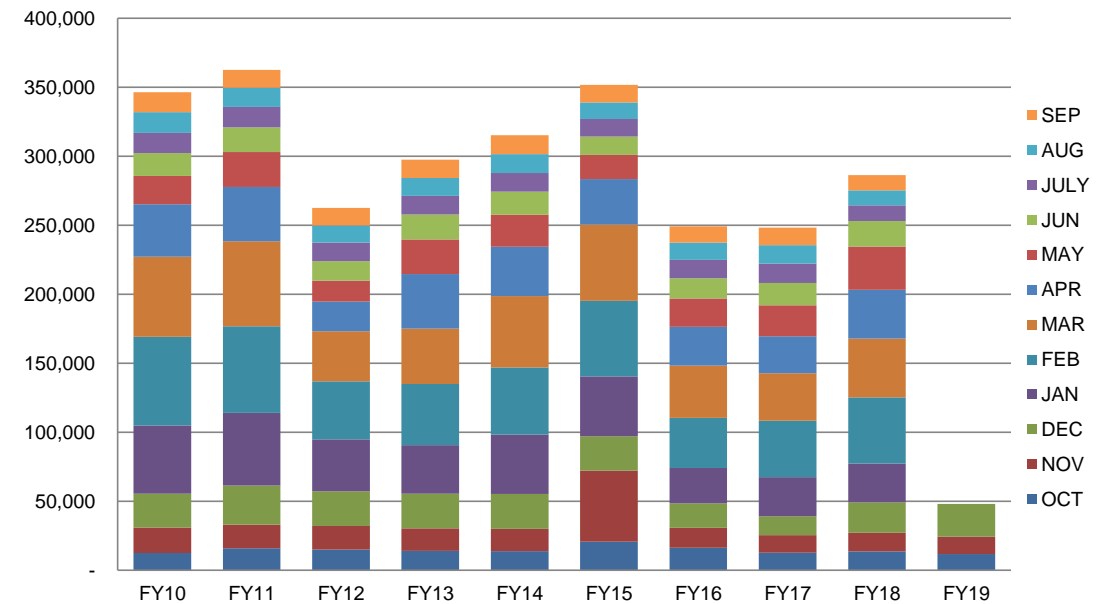


	FY10	FY11	FY12	FY13	FY14	FY15	FY16	FY17	FY18	FY19	CHANGE	%	
OCT	\$ 12,577.82	\$ 16,010.95	\$ 14,972.98	\$ 13,933.54	\$ 13,902.47	\$ 20,695.75	\$ 16,206.16	\$ 12,618.59	\$ 13,625.00	\$ 11,717.80	\$ (1,907.20)	-14.00%	OCT
NOV	\$ 18,421.91	\$ 17,112.67	\$ 17,088.39	\$ 16,379.63	\$ 16,128.21	\$ 51,463.12	\$ 14,594.83	\$ 12,735.62	\$ 13,446.89	\$ 12,544.63	\$ (902.26)	-6.71%	NOV
DEC	\$ 24,463.11	\$ 28,225.68	\$ 25,115.03	\$ 25,200.08	\$ 25,181.13	\$ 24,961.45	\$ 17,610.67	\$ 13,802.46	\$ 22,081.55	\$ 23,794.82	\$ 1,713.27	7.76%	DEC
JAN	\$ 49,441.63	\$ 52,740.33	\$ 37,674.68	\$ 35,119.37	\$ 43,002.93	\$ 43,382.98	\$ 25,607.33	\$ 28,335.87	\$ 28,197.18				JAN
FEB	\$ 64,359.62	\$ 62,646.44	\$ 42,018.45	\$ 44,319.79	\$ 48,772.30	\$ 54,684.74	\$ 36,396.73	\$ 40,779.03	\$ 47,832.59				FEB
MAR	\$ 57,938.35	\$ 61,659.13	\$ 36,310.67	\$ 40,185.64	\$ 51,633.93	\$ 55,282.93	\$ 37,912.69	\$ 34,511.92	\$ 42,688.58				MAR
APR	\$ 38,043.25	\$ 39,357.86	\$ 21,444.19	\$ 39,514.07	\$ 35,820.88	\$ 32,984.98	\$ 28,153.25	\$ 26,768.30	\$ 35,388.54				APR
MAY	\$ 20,534.31	\$ 25,312.57	\$ 15,251.83	\$ 25,030.15	\$ 23,069.55	\$ 17,439.30	\$ 20,447.50	\$ 22,362.25	\$ 31,298.58				MAY
JUN	\$ 16,495.13	\$ 17,781.68	\$ 14,094.19	\$ 18,125.63	\$ 16,801.70	\$ 13,359.06	\$ 14,670.85	\$ 16,300.80	\$ 18,487.52				JUN
JULY	\$ 14,720.85	\$ 14,830.08	\$ 13,412.60	\$ 13,555.40	\$ 13,489.60	\$ 12,746.29	\$ 13,233.97	\$ 13,966.20	\$ 11,375.94				JULY
AUG	\$ 14,857.90	\$ 13,886.38	\$ 12,450.06	\$ 12,837.10	\$ 13,662.83	\$ 12,050.15	\$ 12,589.35	\$ 13,396.36	\$ 10,884.19				AUG
SEP	\$ 14,532.62	\$ 13,081.16	\$ 12,645.29	\$ 13,264.21	\$ 13,750.51	\$ 12,620.75	\$ 11,766.74	\$ 12,751.77	\$ 10,976.43				SEP
TOTAL	\$346,386.50	\$362,644.93	\$262,478.36	\$297,464.61	\$315,216.04	\$351,671.50	\$249,190.07	\$248,329.17	\$286,282.99	\$ 48,057.25	\$ (1,096.19)	-2.23%	TOTAL

GAS FRANCHISE TEN YEAR FISCAL



GAS FRANCHISE REVENUE RECEIVED



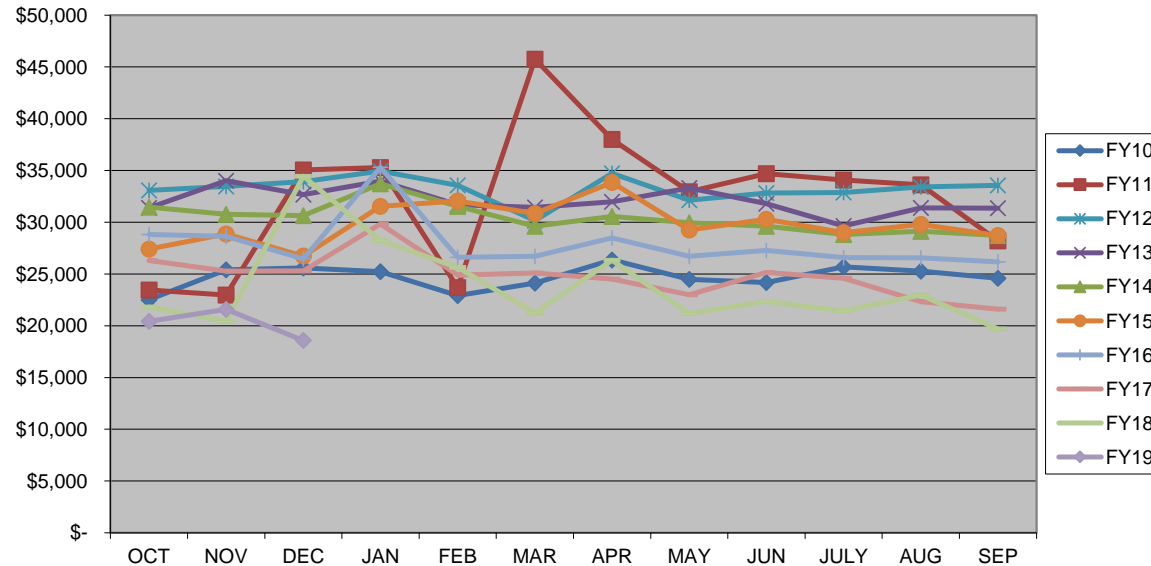
CITY OF WARRENSBURG TELEPHONE FRANCHISE TEN YEAR COMPARISON



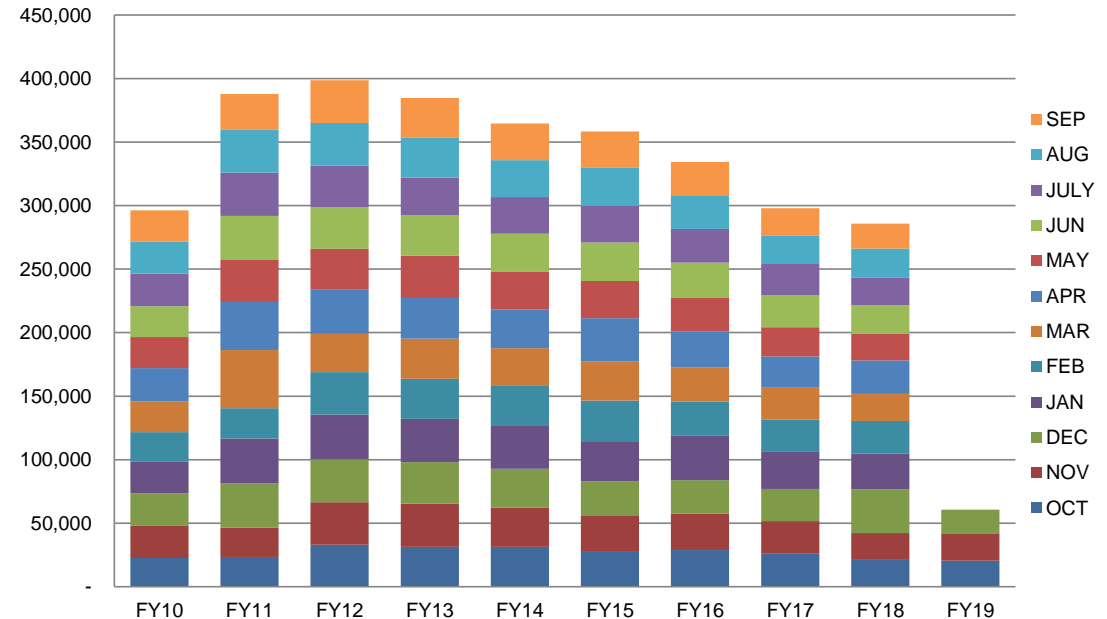
37% -3% -4% -6% -13% -1% -4% 36%

	FY10	FY11	FY12	FY13	FY14	FY15	FY16	FY17	FY18	FY19	CHANGE	%	
OCT	\$ 22,516.14	\$ 23,447.59	\$ 33,078.90	\$ 31,395.24	\$ 31,468.82	\$ 27,420.31	\$ 28,810.91	\$ 26,294.53	\$ 21,807.61	\$ 20,439.05	\$ (1,368.56)	-6.28%	OCT
NOV	\$ 25,410.28	\$ 22,969.83	\$ 33,466.90	\$ 34,014.11	\$ 30,759.91	\$ 28,879.05	\$ 28,630.93	\$ 25,274.82	\$ 20,434.49	\$ 21,586.87	\$ 1,152.38	5.64%	NOV
DEC	\$ 25,593.17	\$ 35,042.46	\$ 33,913.39	\$ 32,675.94	\$ 30,637.30	\$ 26,728.28	\$ 26,446.64	\$ 25,308.28	\$ 34,447.24	\$ 18,572.49	\$(15,874.75)	-46.08%	DEC
JAN	\$ 25,216.02	\$ 35,273.02	\$ 34,938.80	\$ 33,971.37	\$ 33,716.83	\$ 31,545.60	\$ 35,302.58	\$ 29,829.18	\$ 28,226.49				JAN
FEB	\$ 22,911.09	\$ 23,699.30	\$ 33,558.32	\$ 31,690.56	\$ 31,526.48	\$ 32,059.03	\$ 26,600.36	\$ 24,880.87	\$ 25,633.31				FEB
MAR	\$ 24,118.75	\$ 45,759.11	\$ 30,157.94	\$ 31,433.34	\$ 29,623.22	\$ 30,855.52	\$ 26,718.68	\$ 25,108.28	\$ 21,223.43				MAR
APR	\$ 26,364.28	\$ 38,006.15	\$ 34,727.40	\$ 31,983.36	\$ 30,552.27	\$ 33,840.11	\$ 28,476.97	\$ 24,507.31	\$ 26,325.62				APR
MAY	\$ 24,489.15	\$ 32,956.97	\$ 32,138.45	\$ 33,300.57	\$ 29,947.27	\$ 29,254.05	\$ 26,720.89	\$ 23,006.46	\$ 21,166.94				MAY
JUN	\$ 24,178.19	\$ 34,700.11	\$ 32,822.09	\$ 31,802.91	\$ 29,602.41	\$ 30,285.33	\$ 27,274.24	\$ 25,144.48	\$ 22,365.52				JUN
JULY	\$ 25,683.01	\$ 34,089.10	\$ 32,875.99	\$ 29,637.79	\$ 28,827.98	\$ 28,997.42	\$ 26,588.84	\$ 24,578.06	\$ 21,436.21				JULY
AUG	\$ 25,270.95	\$ 33,612.37	\$ 33,418.94	\$ 31,385.38	\$ 29,128.18	\$ 29,800.00	\$ 26,558.24	\$ 22,318.17	\$ 22,980.06				AUG
SEP	\$ 24,581.94	\$ 28,203.46	\$ 33,556.04	\$ 31,367.89	\$ 28,728.22	\$ 28,725.33	\$ 26,172.99	\$ 21,604.17	\$ 19,689.16				SEP
TOTAL	\$296,332.97	\$387,759.47	\$398,653.16	\$384,658.46	\$364,518.89	\$358,390.03	\$334,302.27	\$297,854.61	\$285,736.08	\$ 60,598.41	\$(16,090.93)	-20.98%	TOTAL

TELEPHONE FRANCHISE TEN YEAR FISCAL



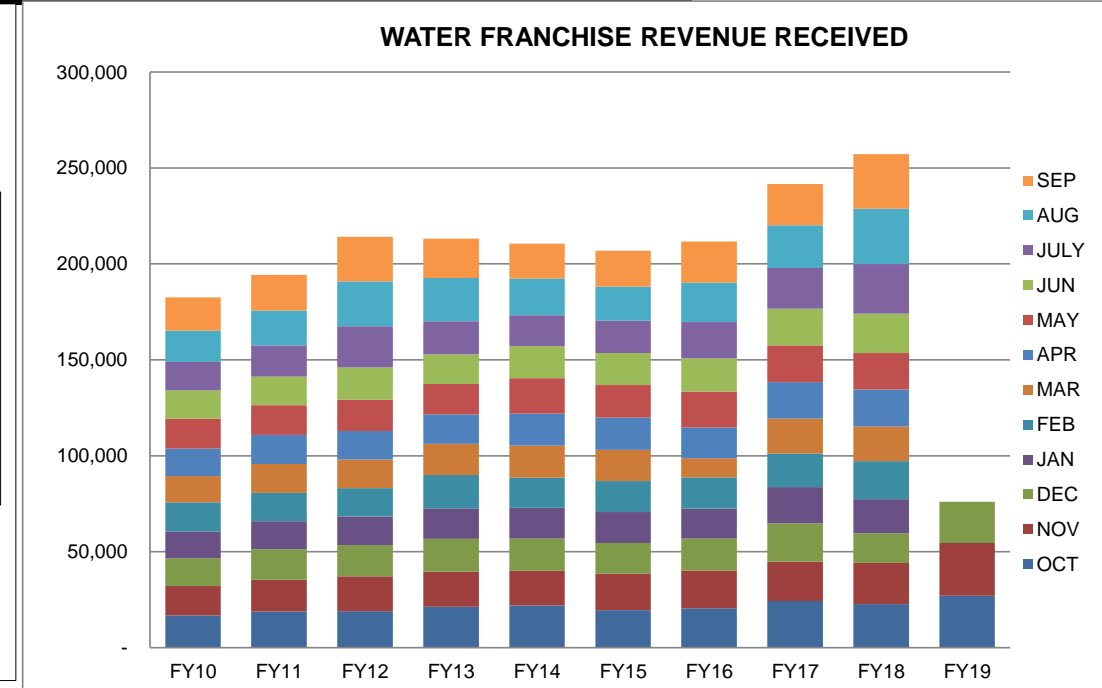
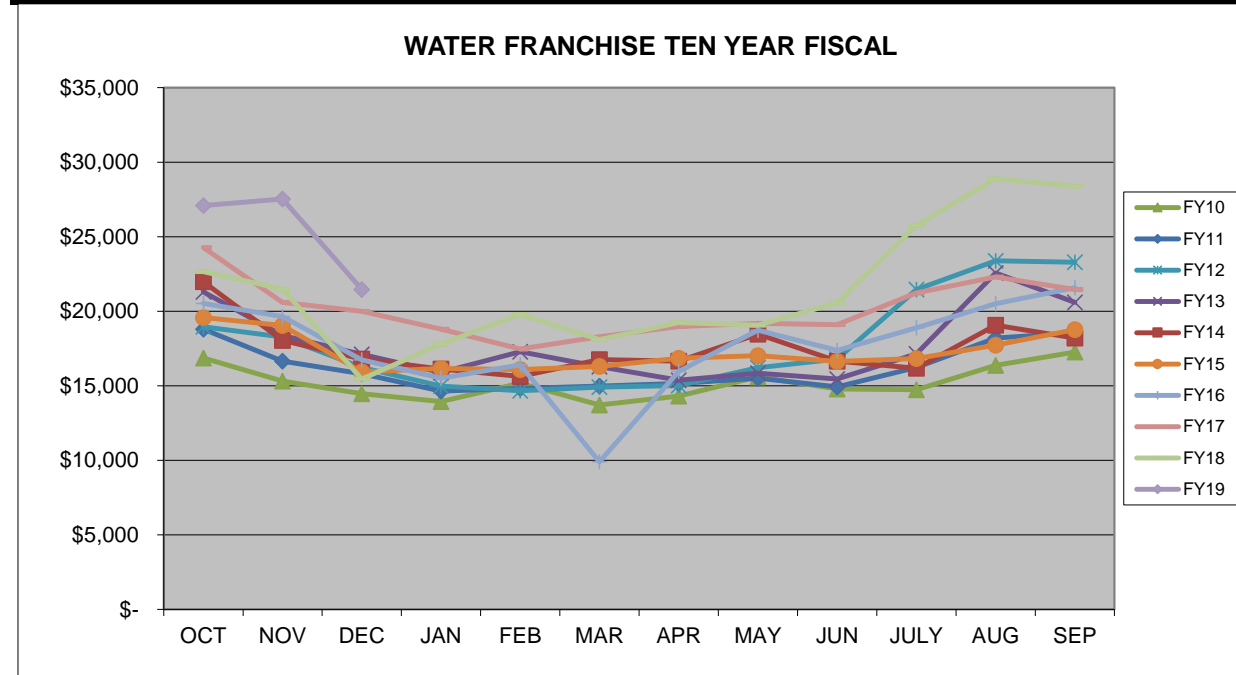
TELEPHONE FRANCHISE REVENUE RECEIVED



CITY OF WARRENSBURG WATER FRANCHISE TEN YEAR COMPARISON



	FY10	FY11	FY12	FY13	FY14	FY15	FY16	FY17	FY18	FY19	CHANGE	%	
OCT	\$ 16,862.70	\$ 18,795.34	\$ 18,959.05	\$ 21,302.11	\$ 21,978.07	\$ 19,577.84	\$ 20,515.52	\$ 24,268.19	\$ 22,651.14	\$ 27,081.50	\$ 4,430.36	19.56%	OCT
NOV	\$ 15,320.65	\$ 16,645.80	\$ 18,269.93	\$ 18,369.21	\$ 18,034.30	\$ 19,040.06	\$ 19,641.98	\$ 20,602.11	\$ 21,483.99	\$ 27,528.82	\$ 6,044.83	28.14%	NOV
DEC	\$ 14,468.01	\$ 15,813.74	\$ 16,222.24	\$ 17,104.86	\$ 16,795.72	\$ 15,928.34	\$ 16,736.34	\$ 19,998.95	\$ 15,449.82	\$ 21,465.13	\$ 6,015.31	38.93%	DEC
JAN	\$ 13,934.87	\$ 14,644.94	\$ 14,974.32	\$ 15,891.96	\$ 16,126.97	\$ 16,151.91	\$ 15,505.49	\$ 18,790.26	\$ 17,797.76				JAN
FEB	\$ 15,167.29	\$ 14,826.28	\$ 14,665.15	\$ 17,283.89	\$ 15,629.74	\$ 16,082.10	\$ 16,396.83	\$ 17,467.06	\$ 19,791.56				FEB
MAR	\$ 13,712.26	\$ 14,970.80	\$ 14,901.69	\$ 16,278.68	\$ 16,765.60	\$ 16,300.05	\$ 9,901.17	\$ 18,292.41	\$ 18,086.47				MAR
APR	\$ 14,302.84	\$ 15,147.77	\$ 15,019.24	\$ 15,375.13	\$ 16,656.59	\$ 16,846.01	\$ 15,960.62	\$ 18,978.09	\$ 19,245.34				APR
MAY	\$ 15,592.61	\$ 15,509.90	\$ 16,208.46	\$ 15,835.23	\$ 18,456.83	\$ 17,017.93	\$ 18,736.44	\$ 19,180.78	\$ 19,068.28				MAY
JUN	\$ 14,782.02	\$ 14,934.77	\$ 16,795.23	\$ 15,462.63	\$ 16,655.65	\$ 16,631.16	\$ 17,364.79	\$ 19,092.34	\$ 20,560.98				JUN
JULY	\$ 14,739.12	\$ 16,223.13	\$ 21,463.73	\$ 17,138.33	\$ 16,178.92	\$ 16,835.74	\$ 18,881.10	\$ 21,233.32	\$ 25,762.39				JULY
AUG	\$ 16,362.95	\$ 18,194.97	\$ 23,382.81	\$ 22,567.13	\$ 19,070.60	\$ 17,719.54	\$ 20,508.15	\$ 22,299.45	\$ 28,883.07				AUG
SEP	\$ 17,261.87	\$ 18,560.10	\$ 23,290.15	\$ 20,585.92	\$ 18,198.80	\$ 18,768.34	\$ 21,577.92	\$ 21,459.56	\$ 28,394.09				SEP
TOTALS	\$182,507.19	\$194,267.54	\$214,152.00	\$213,195.08	\$210,547.79	\$206,899.02	\$211,726.35	\$241,662.52	\$257,174.89	\$ 76,075.45	\$16,490.50	27.68%	TOTAL

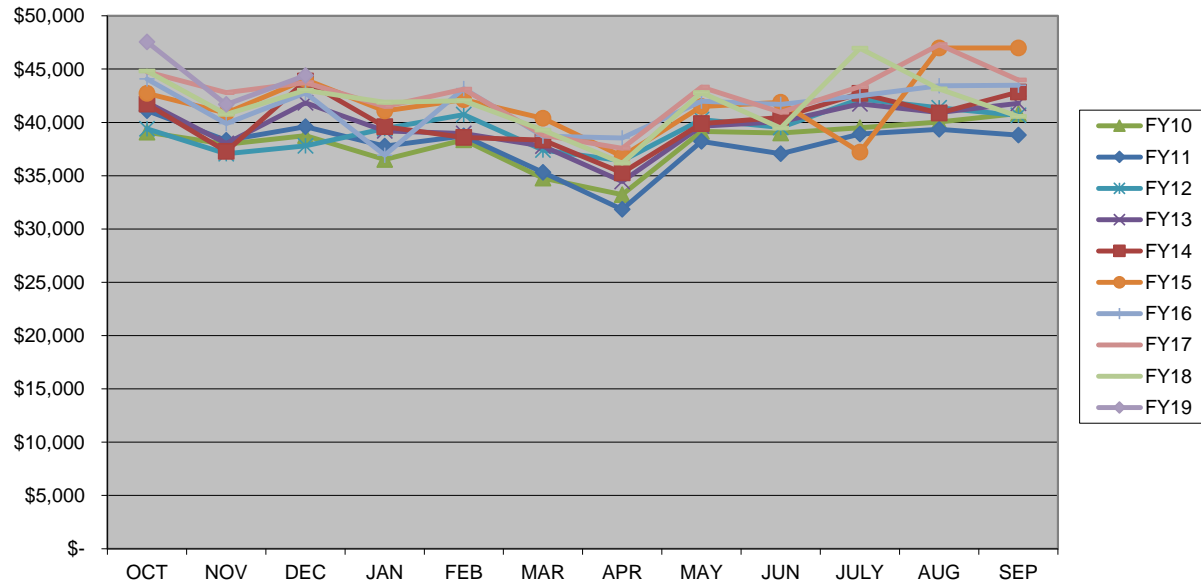


CITY OF WARRENSBURG FUEL TAX TEN YEAR COMPARISON

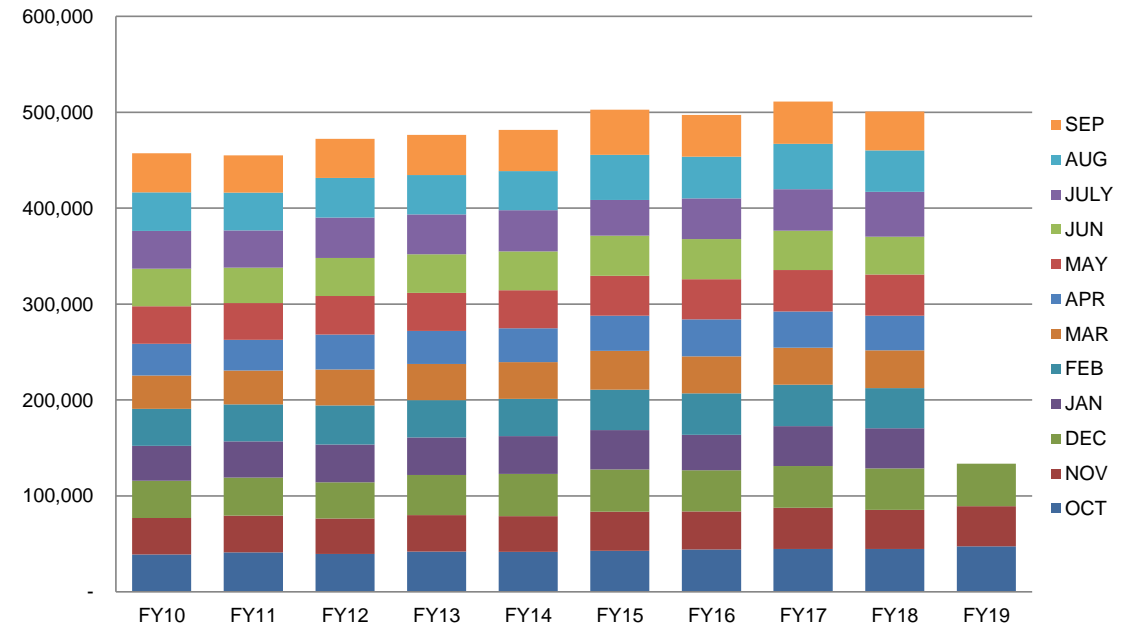


	FY10	FY11	FY12	FY13	FY14	FY15	FY16	FY17	FY18	FY19	CHANGE	%	
OCT	\$ 39,079.46	\$ 41,103.18	\$ 39,386.21	\$ 41,877.52	\$ 41,715.79	\$ 42,723.29	\$ 44,065.90	\$ 44,742.37	\$ 44,811.63	\$ 47,547.71	\$ 2,736.08	6.11%	OCT
NOV	\$ 37,956.13	\$ 38,326.00	\$ 37,069.62	\$ 38,013.58	\$ 37,279.22	\$ 40,879.99	\$ 39,883.27	\$ 42,796.74	\$ 40,758.82	\$ 41,678.63	\$ 919.81	2.26%	NOV
DEC	\$ 38,764.84	\$ 39,593.24	\$ 37,800.28	\$ 41,835.25	\$ 43,874.69	\$ 44,019.43	\$ 42,777.38	\$ 43,722.23	\$ 43,017.04	\$ 44,396.20	\$ 1,379.16	3.21%	DEC
JAN	\$ 36,517.71	\$ 37,776.30	\$ 39,426.07	\$ 39,191.20	\$ 39,582.06	\$ 41,075.51	\$ 36,921.22	\$ 41,485.06	\$ 41,877.67				JAN
FEB	\$ 38,353.50	\$ 38,738.59	\$ 40,721.19	\$ 38,955.01	\$ 38,594.64	\$ 42,119.73	\$ 43,165.97	\$ 43,106.39	\$ 42,022.56				FEB
MAR	\$ 34,760.53	\$ 35,306.68	\$ 37,408.71	\$ 37,774.76	\$ 38,348.38	\$ 40,380.34	\$ 38,709.65	\$ 38,803.32	\$ 39,263.56				MAR
APR	\$ 33,220.09	\$ 31,834.28	\$ 36,397.65	\$ 34,457.40	\$ 35,271.63	\$ 36,813.63	\$ 38,535.51	\$ 37,566.23	\$ 36,177.48				APR
MAY	\$ 39,162.93	\$ 38,219.77	\$ 40,253.13	\$ 39,646.24	\$ 39,891.56	\$ 41,490.95	\$ 41,991.65	\$ 43,315.45	\$ 42,789.67				MAY
JUN	\$ 38,997.77	\$ 37,069.17	\$ 39,514.31	\$ 40,072.81	\$ 40,467.27	\$ 41,875.83	\$ 41,681.60	\$ 40,954.48	\$ 39,479.42				JUN
JULY	\$ 39,505.96	\$ 38,907.66	\$ 42,189.92	\$ 41,725.22	\$ 42,721.53	\$ 37,197.06	\$ 42,493.33	\$ 43,368.62	\$ 46,951.12				JULY
AUG	\$ 40,044.46	\$ 39,338.04	\$ 41,361.62	\$ 40,925.24	\$ 40,870.07	\$ 46,967.52	\$ 43,437.71	\$ 47,290.82	\$ 43,139.74				AUG
SEP	\$ 40,834.05	\$ 38,801.46	\$ 40,642.42	\$ 41,784.11	\$ 42,850.91	\$ 46,983.16	\$ 43,473.69	\$ 43,966.54	\$ 40,561.89				SEP
TOTAL	\$457,197.43	\$455,014.37	\$472,171.13	\$476,258.34	\$481,467.75	\$502,526.44	\$497,136.88	\$511,118.25	\$500,850.60	\$133,622.54	\$ 5,035.05	3.92%	TOTAL

FUEL TAX TEN YEAR FISCAL



FUEL TAX TAXES RECEIVED

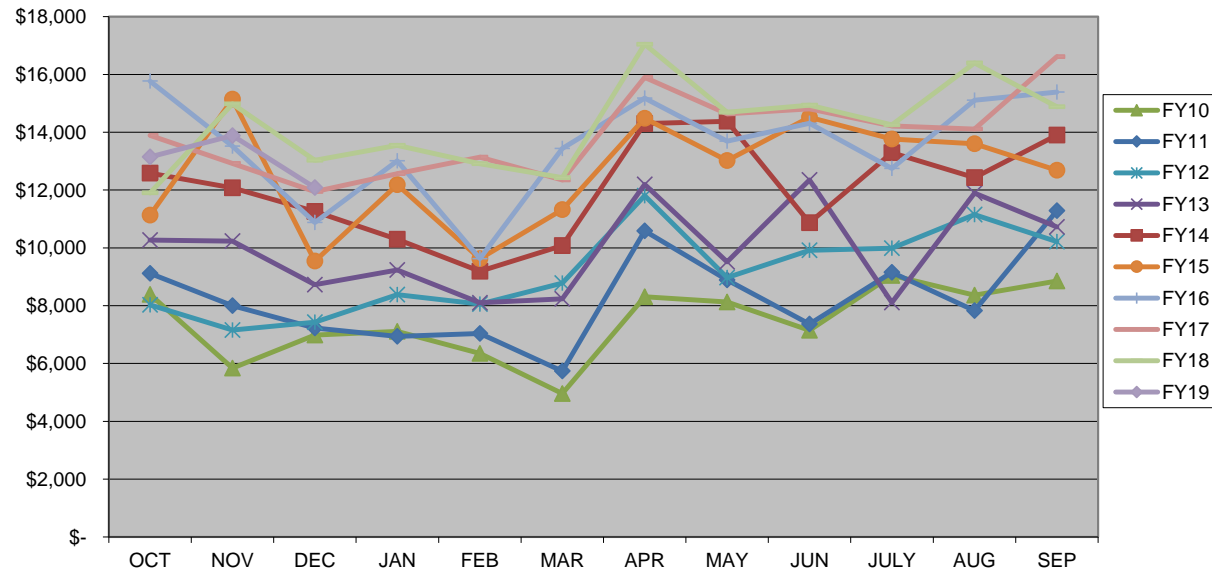


CITY OF WARRENSBURG VEHICLE SALES TAX TEN YEAR COMPARISON

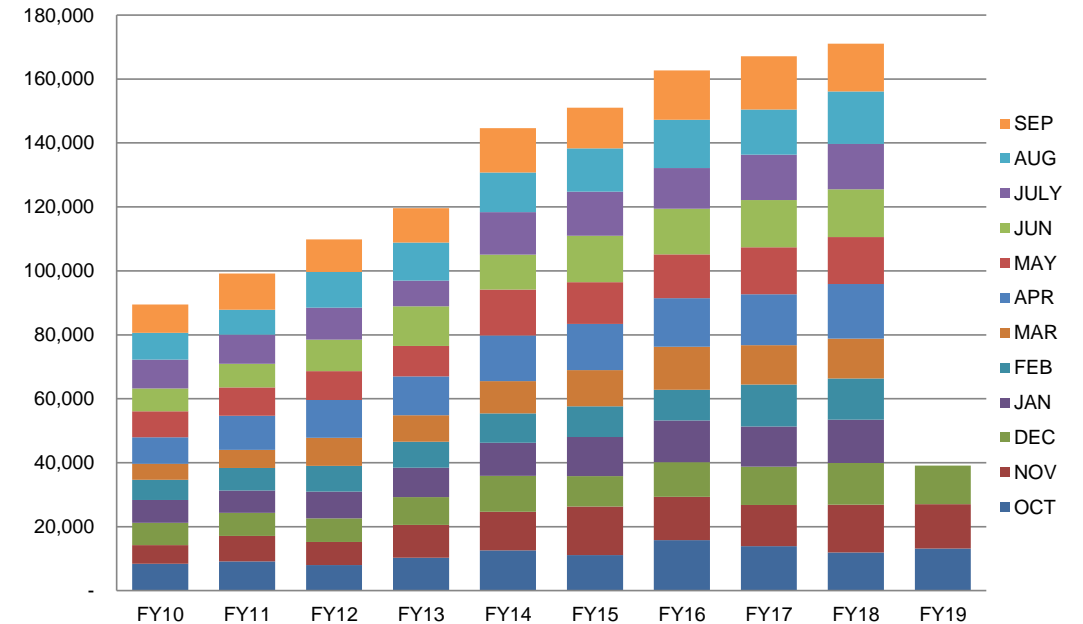


	FY10	FY11	FY12	FY13	FY14	FY15	FY16	FY17	FY18	FY19	CHANGE	%	
OCT	\$ 8,391.55	\$ 9,116.20	\$ 8,023.49	\$ 10,271.63	\$ 12,587.97	\$ 11,133.14	\$ 15,766.87	\$ 13,887.55	\$ 11,899.67	\$ 13,143.56	\$ 1,243.89	10.45%	OCT
NOV	\$ 5,836.59	\$ 8,000.44	\$ 7,157.72	\$ 10,232.80	\$ 12,075.97	\$ 15,142.25	\$ 13,522.66	\$ 12,918.80	\$ 14,983.91	\$ 13,885.26	\$(1,098.65)	-7.33%	NOV
DEC	\$ 6,983.78	\$ 7,225.11	\$ 7,426.95	\$ 8,730.69	\$ 11,263.48	\$ 9,540.73	\$ 10,881.16	\$ 11,946.31	\$ 13,032.20	\$ 12,081.77	\$ (950.43)	-7.29%	DEC
JAN	\$ 7,110.67	\$ 6,934.42	\$ 8,384.54	\$ 9,237.60	\$ 10,300.01	\$ 12,181.42	\$ 13,011.46	\$ 12,567.00	\$ 13,547.75				JAN
FEB	\$ 6,352.78	\$ 7,038.66	\$ 8,051.69	\$ 8,102.67	\$ 9,191.59	\$ 9,627.94	\$ 9,627.54	\$ 13,136.63	\$ 12,913.06				FEB
MAR	\$ 4,961.47	\$ 5,735.87	\$ 8,778.18	\$ 8,232.95	\$ 10,078.07	\$ 11,319.97	\$ 13,441.92	\$ 12,344.70	\$ 12,431.02				MAR
APR	\$ 8,308.32	\$ 10,591.67	\$ 11,804.56	\$ 12,197.38	\$ 14,304.07	\$ 14,485.07	\$ 15,176.34	\$ 15,898.30	\$ 17,044.47				APR
MAY	\$ 8,128.85	\$ 8,892.20	\$ 8,970.97	\$ 9,513.62	\$ 14,377.65	\$ 13,023.93	\$ 13,689.40	\$ 14,636.44	\$ 14,693.00				MAY
JUN	\$ 7,143.64	\$ 7,365.20	\$ 9,911.30	\$ 12,349.75	\$ 10,866.95	\$ 14,520.10	\$ 14,308.27	\$ 14,812.74	\$ 14,937.50				JUN
JULY	\$ 9,048.00	\$ 9,149.16	\$ 9,989.54	\$ 8,113.37	\$ 13,287.99	\$ 13,766.26	\$ 12,746.19	\$ 14,214.74	\$ 14,252.51				JULY
AUG	\$ 8,367.62	\$ 7,831.47	\$ 11,151.75	\$ 11,890.87	\$ 12,427.95	\$ 13,596.70	\$ 15,105.89	\$ 14,110.58	\$ 16,400.31				AUG
SEP	\$ 8,850.93	\$ 11,285.14	\$ 10,217.14	\$ 10,723.86	\$ 13,905.09	\$ 12,680.15	\$ 15,385.33	\$ 16,616.46	\$ 14,883.09				SEP
TOTAL	\$ 89,484.20	\$ 99,165.54	\$ 109,867.83	\$ 119,597.19	\$ 144,666.79	\$ 151,017.66	\$ 162,663.03	\$ 167,090.25	\$ 171,018.49	\$ 39,110.59	\$ (805.19)	-2.02%	TOTAL

VEHICLE SALES TAX FIVE YEAR FISCAL



VEHICLE SALES TAX TAXES RECEIVED

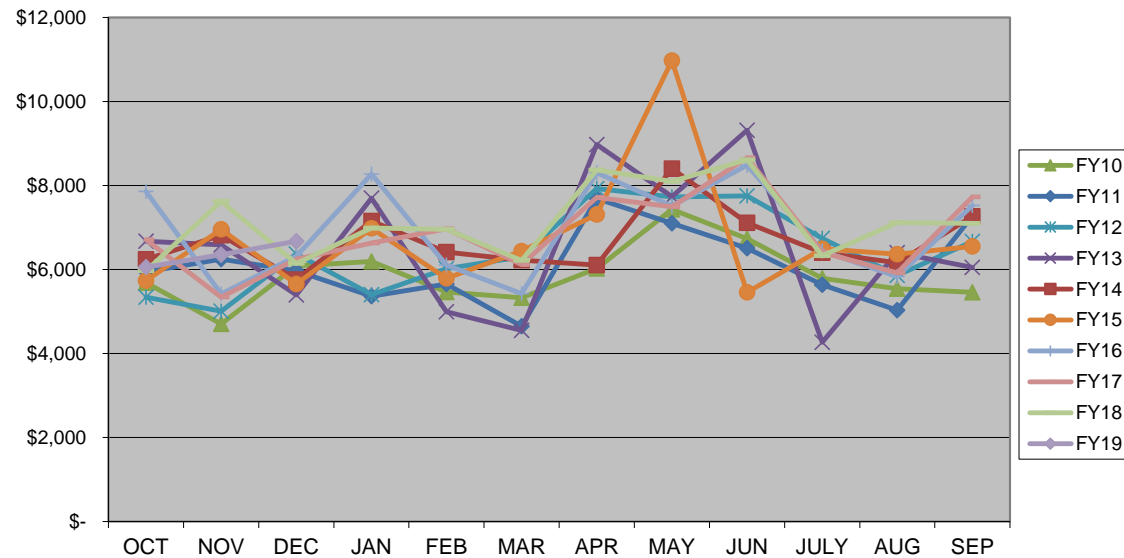


CITY OF WARRENSBURG VEHICLE FEE INCREASES TEN YEAR COMPARISON

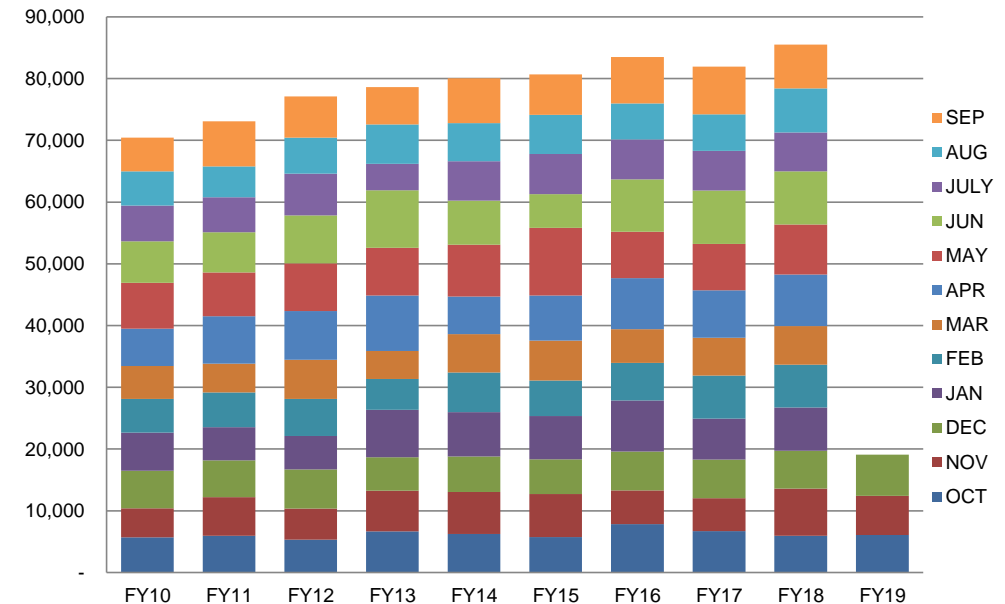


	FY10	FY11	FY12	FY13	FY14	FY15	FY16	FY17	FY18	FY19	CHANGE	%	
OCT	\$ 5,684.73	\$ 5,944.79	\$ 5,338.02	\$ 6,675.58	\$ 6,240.07	\$ 5,732.28	\$ 7,856.73	\$ 6,708.82	\$ 5,966.45	\$ 6,056.04	\$ 89.59	1.50%	OCT
NOV	\$ 4,702.43	\$ 6,249.85	\$ 5,006.52	\$ 6,583.47	\$ 6,812.99	\$ 6,957.32	\$ 5,421.51	\$ 5,342.88	\$ 7,625.30	\$ 6,350.20	\$(1,275.10)	-16.72%	NOV
DEC	\$ 6,087.17	\$ 5,970.82	\$ 6,368.28	\$ 5,395.34	\$ 5,762.40	\$ 5,654.45	\$ 6,312.74	\$ 6,244.85	\$ 6,140.40	\$ 6,673.58	\$ 533.18	8.68%	DEC
JAN	\$ 6,188.35	\$ 5,365.97	\$ 5,404.30	\$ 7,696.90	\$ 7,156.49	\$ 6,982.76	\$ 8,270.10	\$ 6,629.29	\$ 6,989.00				JAN
FEB	\$ 5,463.11	\$ 5,652.77	\$ 6,018.52	\$ 4,996.89	\$ 6,411.83	\$ 5,791.99	\$ 6,104.47	\$ 6,966.20	\$ 6,956.32				FEB
MAR	\$ 5,330.16	\$ 4,649.07	\$ 6,303.94	\$ 4,552.26	\$ 6,219.23	\$ 6,438.11	\$ 5,425.51	\$ 6,116.57	\$ 6,217.45				MAR
APR	\$ 6,023.19	\$ 7,688.56	\$ 7,926.65	\$ 8,973.06	\$ 6,105.43	\$ 7,310.08	\$ 8,300.34	\$ 7,717.11	\$ 8,368.71				APR
MAY	\$ 7,430.72	\$ 7,099.34	\$ 7,727.20	\$ 7,736.92	\$ 8,403.46	\$ 10,970.91	\$ 7,512.51	\$ 7,491.24	\$ 8,097.62				MAY
JUN	\$ 6,736.67	\$ 6,504.77	\$ 7,755.17	\$ 9,314.58	\$ 7,110.79	\$ 5,456.41	\$ 8,483.20	\$ 8,659.49	\$ 8,612.02				JUN
JULY	\$ 5,789.28	\$ 5,635.82	\$ 6,740.99	\$ 4,267.49	\$ 6,401.45	\$ 6,492.16	\$ 6,440.01	\$ 6,404.47	\$ 6,325.80				JULY
AUG	\$ 5,541.56	\$ 5,029.06	\$ 5,861.17	\$ 6,401.94	\$ 6,157.45	\$ 6,363.07	\$ 5,833.11	\$ 5,921.70	\$ 7,117.29				AUG
SEP	\$ 5,458.68	\$ 7,271.82	\$ 6,666.26	\$ 6,048.49	\$ 7,266.22	\$ 6,548.28	\$ 7,525.29	\$ 7,724.85	\$ 7,100.63				SEP
TOTAL	\$70,436.05	\$73,062.64	\$77,117.02	\$78,642.92	\$80,047.81	\$80,697.82	\$83,485.52	\$81,927.47	\$85,516.99	\$19,079.82	\$ (652.33)	-3.31%	TOTAL

VEHICLE FEE INCREASES TEN YEAR FISCAL



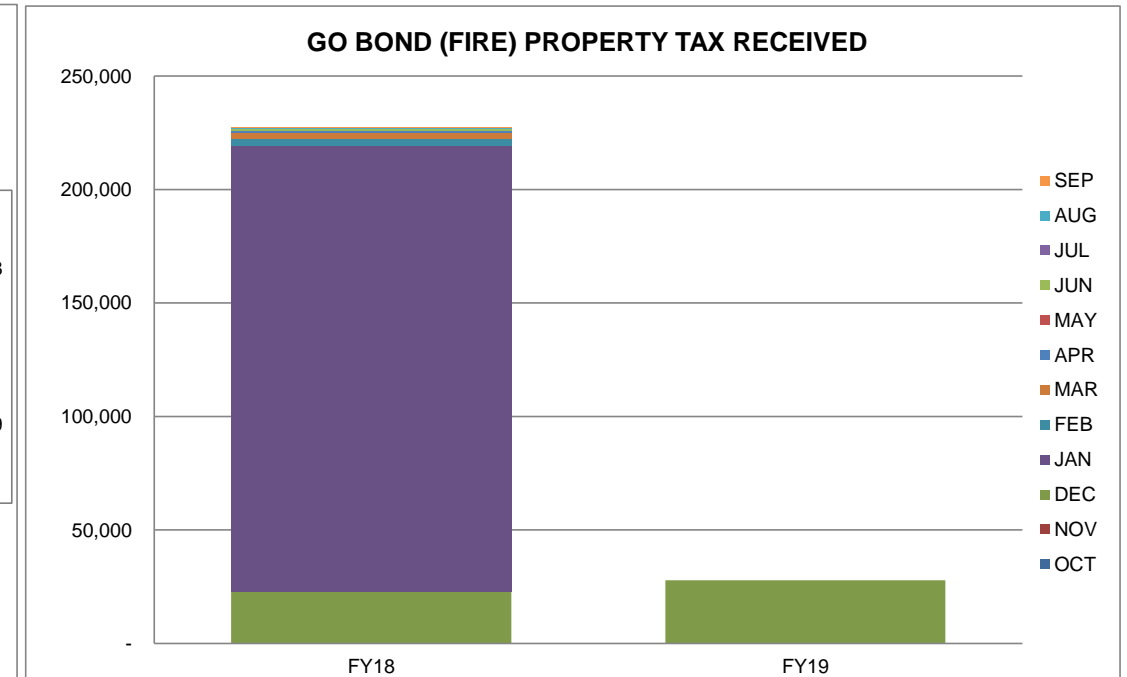
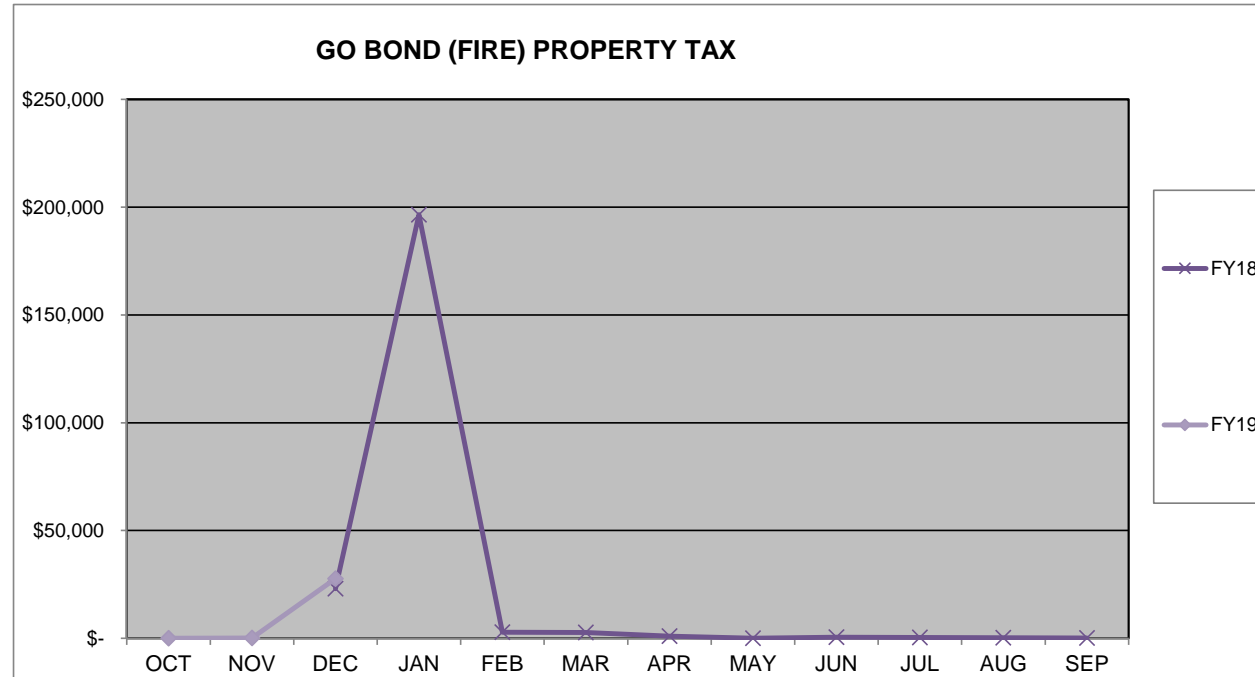
VEHICLE FEE INCREASES TAXES RECEIVED



**CITY OF WARRENSBURG
GO BOND (FIRE) PROPERTY TAX**



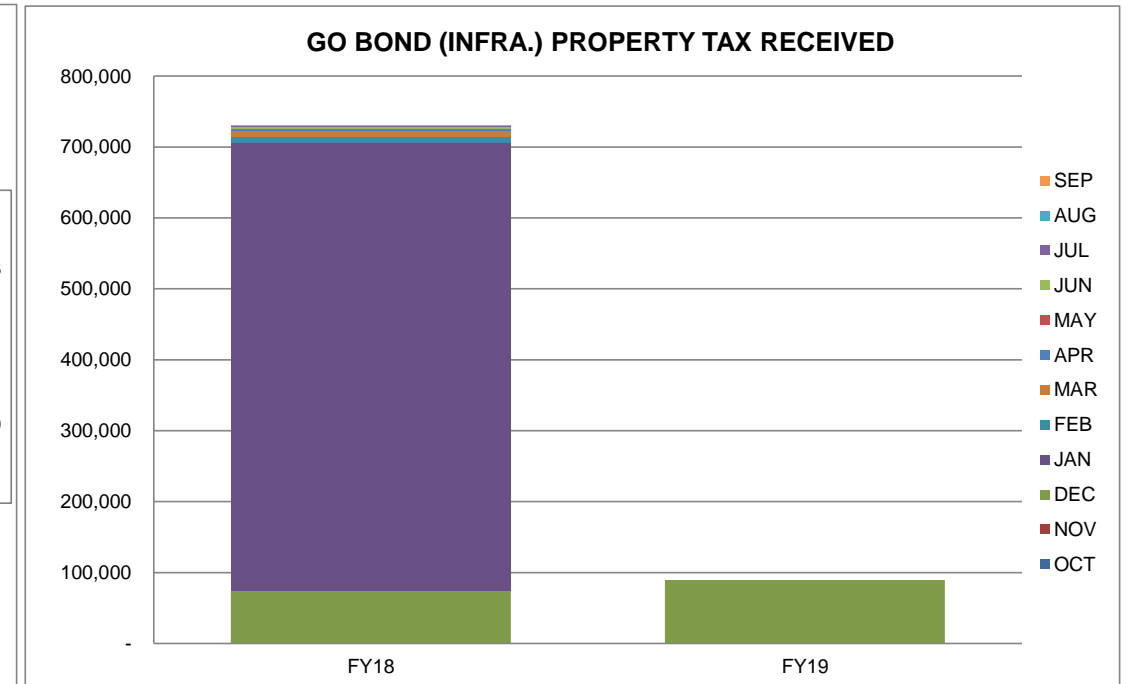
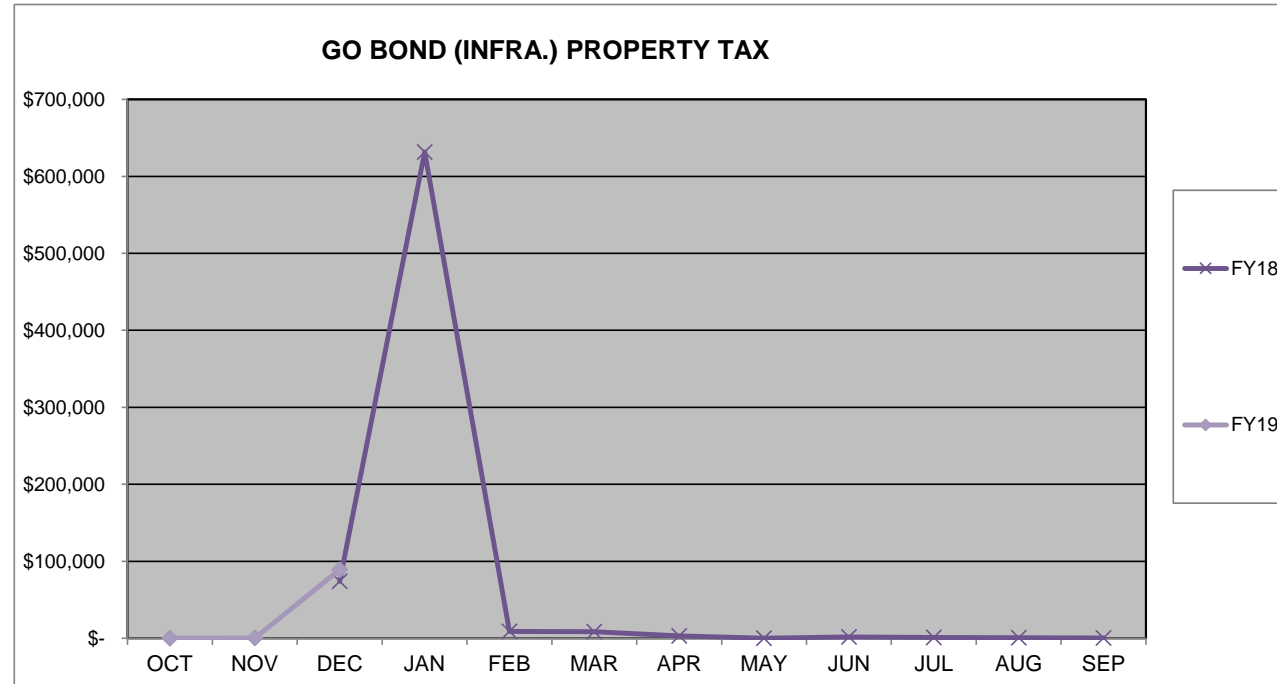
	FY18	FY19	CHANGE	%	
OCT		\$ 30.98			OCT
NOV		\$ 86.53			NOV
DEC	\$ 23,041.90	\$ 27,685.94	\$ 4,644.04	20.15%	DEC
JAN	\$ 196,499.72				JAN
FEB	\$ 2,785.23				FEB
MAR	\$ 2,697.95				MAR
APR	\$ 941.97				APR
MAY	\$ 41.39				MAY
JUN	\$ 539.20				JUN
JUL	\$ 345.88				JUL
AUG	\$ 214.68				AUG
SEP	\$ 165.72				SEP
TOTAL	\$227,273.64	\$ 27,803.45	\$ 4,644.04	20.15%	TOTAL



CITY OF WARRENSBURG GO BOND (INFRA.) PROPERTY TAX



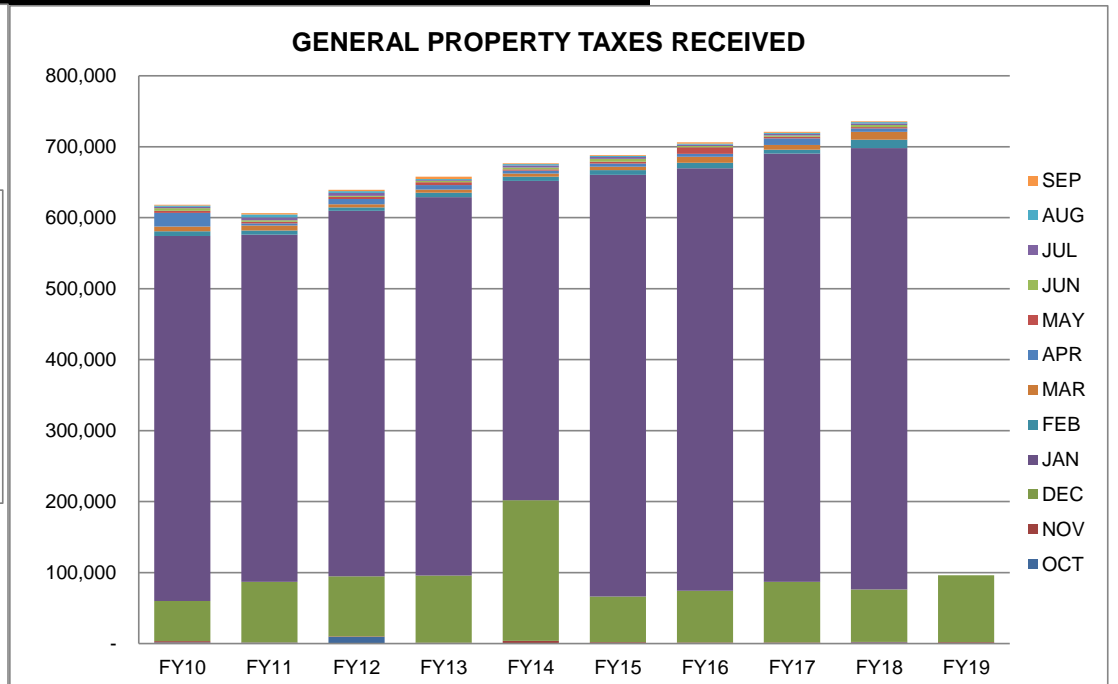
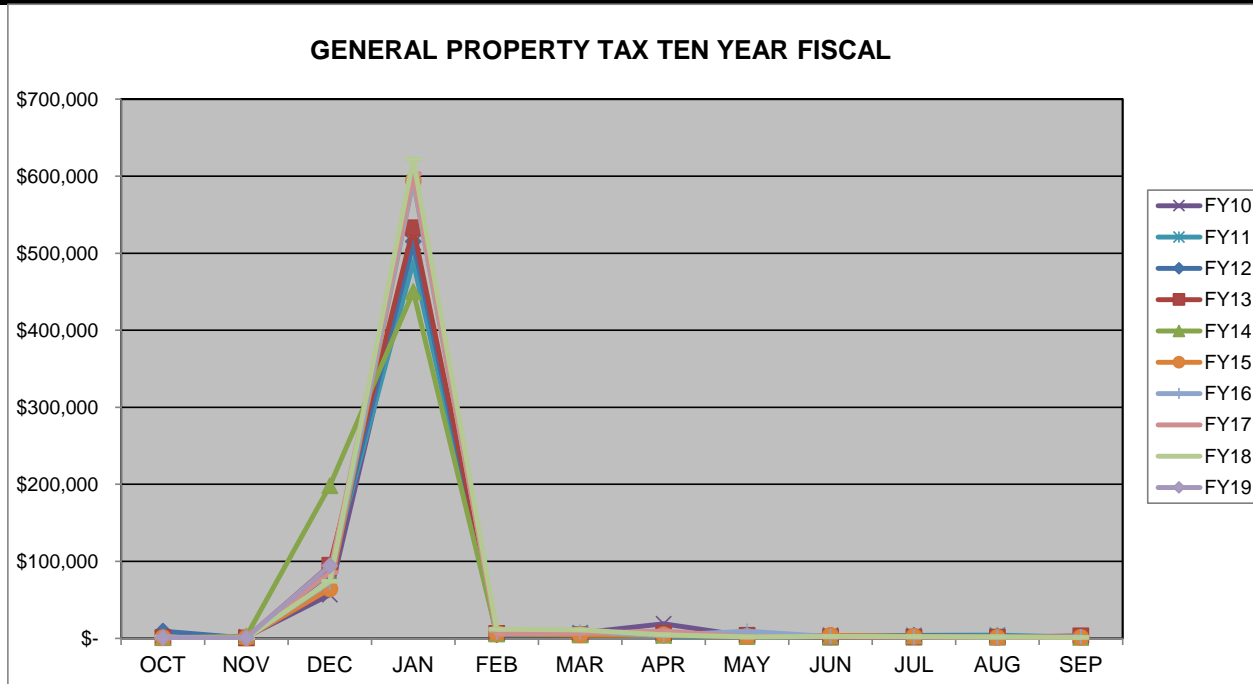
	FY18	FY19	CHANGE	%	
OCT		\$ 99.59			OCT
NOV		\$ 278.13			NOV
DEC	\$ 74,063.25	\$ 88,990.51	\$ 14,927.26	20.15%	DEC
JAN	\$ 631,606.26				JAN
FEB	\$ 8,952.51				FEB
MAR	\$ 8,671.97				MAR
APR	\$ 3,027.78				APR
MAY	\$ 133.03				MAY
JUN	\$ 1,733.13				JUN
JUL	\$ 1,111.74				JUL
AUG	\$ 690.05				AUG
SEP	\$ 532.67				SEP
TOTAL	\$ 730,522.39	\$ 89,368.23	\$ 14,927.26	20.15%	TOTAL



CITY OF WARRENSBURG
***GENERAL PROPERTY TAX TEN YEAR COMPARISON**



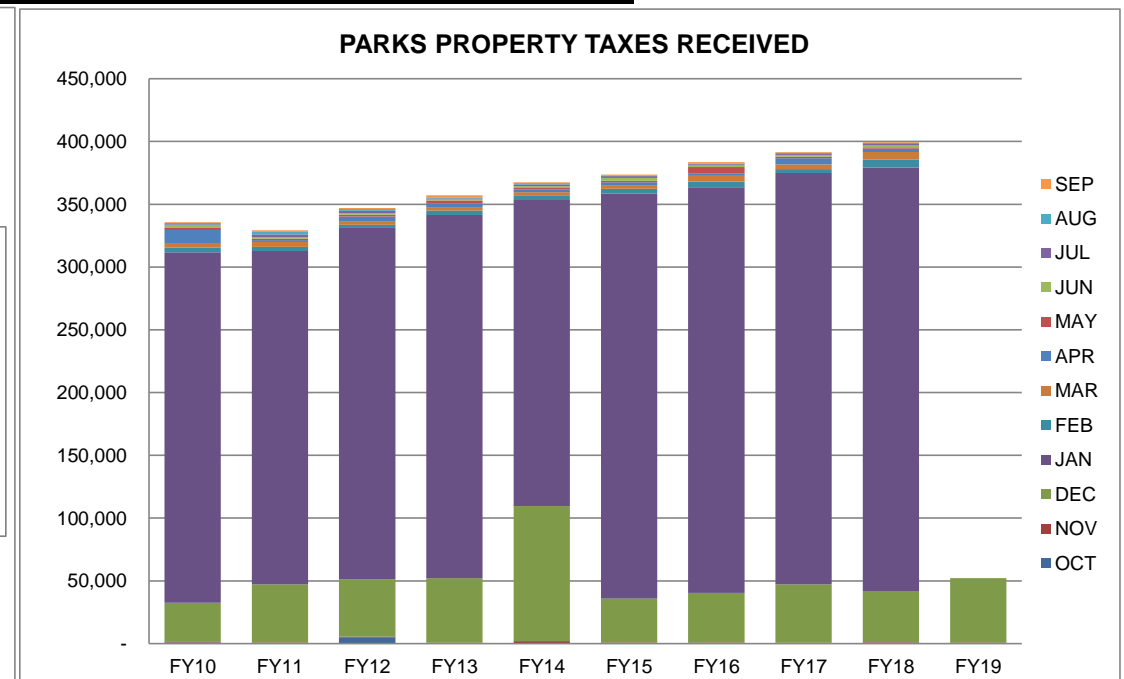
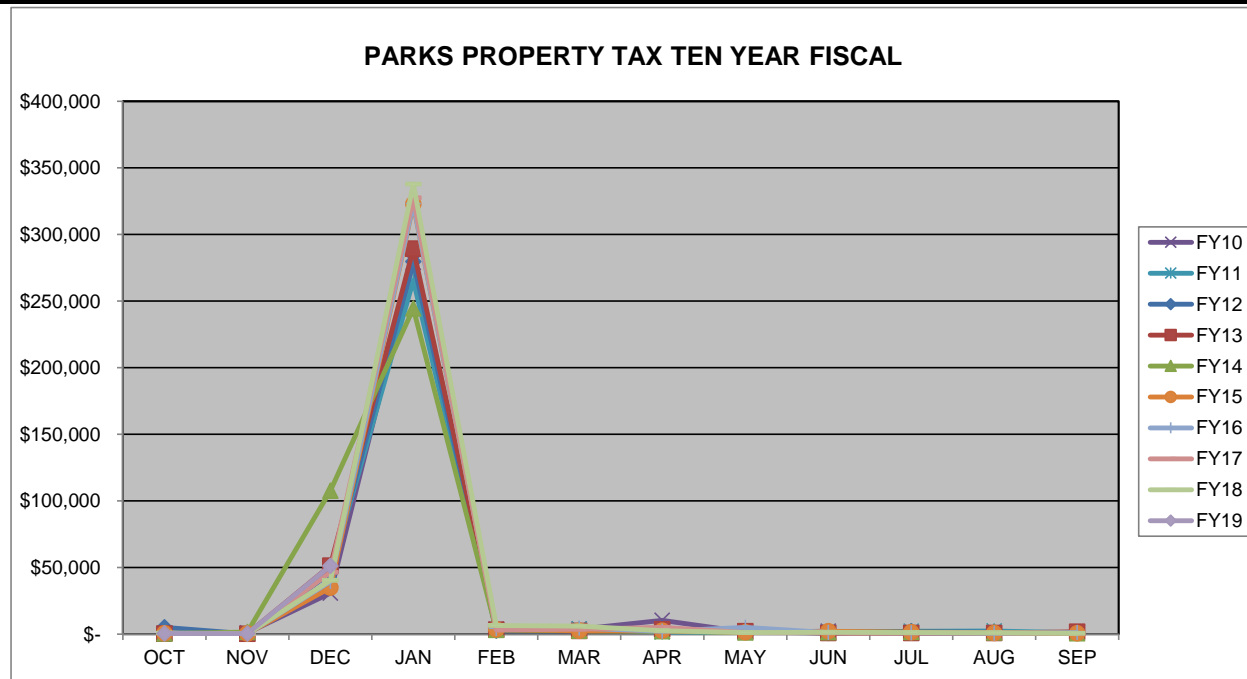
	FY10	FY11	FY12	FY13	FY14	FY15	FY16	FY17	FY18	FY19	CHANGE	%	
OCT	\$ 1,656.74	\$ 1,156.13	\$ 9,532.02	\$ 776.01	\$ 809.82	\$ 990.35	\$ 1,024.42	\$ 760.94	\$ 1,579.21	\$ 923.63	\$ (655.58)	-41.51%	OCT
NOV	\$ 1,811.80	\$ 482.89	\$ 427.55	\$ 549.09	\$ 2,830.07	\$ 937.38	\$ 571.55	\$ 813.35	\$ 579.41	\$ 936.13	\$ 356.72	61.57%	NOV
DEC	\$ 56,660.87	\$ 85,447.12	\$ 84,670.94	\$ 94,708.78	\$ 198,157.94	\$ 64,247.08	\$ 72,762.67	\$ 85,480.23	\$ 74,141.22	\$ 94,335.00	\$ 20,193.78	27.24%	DEC
JAN	\$ 513,991.48	\$ 489,049.51	\$ 515,110.20	\$ 532,822.78	\$ 450,191.10	\$ 594,229.10	\$ 595,144.80	\$ 603,143.74	\$ 621,829.90				JAN
FEB	\$ 6,732.12	\$ 5,866.18	\$ 4,777.03	\$ 6,310.47	\$ 5,681.97	\$ 6,671.45	\$ 8,089.75	\$ 5,730.71	\$ 11,708.78				FEB
MAR	\$ 6,913.46	\$ 7,187.86	\$ 4,525.00	\$ 4,450.08	\$ 4,578.32	\$ 4,720.75	\$ 8,372.44	\$ 6,756.24	\$ 11,168.06				MAR
APR	\$ 18,988.64	\$ 2,867.51	\$ 7,430.26	\$ 6,402.69	\$ 3,985.28	\$ 4,680.68	\$ 3,889.93	\$ 9,238.64	\$ 4,779.23				APR
MAY	\$ 2,943.91	\$ 2,243.00	\$ 2,934.38	\$ 4,088.27	\$ 2,103.19	\$ 2,443.45	\$ 9,241.41	\$ 2,264.39	\$ 2,050.31				MAY
JUN	\$ 3,899.31	\$ 2,332.88	\$ 1,631.10	\$ 1,647.74	\$ 2,499.61	\$ 3,952.76	\$ 2,092.34	\$ 1,853.72	\$ 2,721.94				JUN
JUL	\$ 1,737.76	\$ 3,888.54	\$ 4,047.19	\$ 1,440.03	\$ 2,744.17	\$ 2,658.56	\$ 1,901.86	\$ 1,965.93	\$ 2,285.08				JUL
AUG	\$ 1,729.50	\$ 4,239.83	\$ 2,551.33	\$ 1,408.73	\$ 2,099.88	\$ 1,354.56	\$ 1,207.55	\$ 1,743.41	\$ 1,745.69				AUG
SEP	\$ 1,080.26	\$ 1,685.23	\$ 1,607.13	\$ 3,096.55	\$ 1,065.00	\$ 1,102.86	\$ 2,071.15	\$ 1,200.78	\$ 1,288.94				SEP
TOTAL	\$618,145.85	\$606,446.68	\$639,244.13	\$657,701.22	\$676,746.35	\$687,988.98	\$706,369.87	\$720,952.08	\$735,877.77	\$ 96,194.76	\$ 19,894.92	26.07%	TOTAL



CITY OF WARRENSBURG
***PARKS PROPERTY TAX TEN YEAR COMPARISON**



	FY10	FY11	FY12	FY13	FY14	FY15	FY16	FY17	FY18	FY19	CHANGE	%	
OCT	\$ 899.56	\$ 627.74	\$ 5,175.64	\$ 421.35	\$ 439.71	\$ 537.89	\$ 556.38	\$ 413.29	\$ 857.71	\$ 501.76	\$ (355.95)	-41.50%	OCT
NOV	\$ 983.75	\$ 262.20	\$ 232.15	\$ 298.14	\$ 1,536.65	\$ 509.12	\$ 310.43	\$ 441.75	\$ 314.70	\$ 508.54	\$ 193.84	61.60%	NOV
DEC	\$ 30,765.25	\$ 46,395.38	\$ 45,973.93	\$ 51,424.19	\$107,594.17	\$ 34,894.29	\$ 39,519.33	\$ 46,426.59	\$ 40,276.27	\$ 51,246.28	\$10,970.01	27.24%	DEC
JAN	\$279,082.87	\$265,540.07	\$279,690.29	\$289,307.72	\$244,510.74	\$322,741.58	\$323,238.93	\$327,583.36	\$337,801.16				JAN
FEB	\$ 3,655.34	\$ 3,185.17	\$ 2,593.78	\$ 3,426.41	\$ 3,086.04	\$ 3,623.44	\$ 4,393.75	\$ 3,112.49	\$ 6,360.64				FEB
MAR	\$ 3,753.82	\$ 3,902.80	\$ 2,456.94	\$ 2,416.27	\$ 2,486.61	\$ 2,563.97	\$ 4,547.29	\$ 3,669.50	\$ 6,066.90				MAR
APR	\$ 10,310.29	\$ 1,556.99	\$ 4,034.42	\$ 3,476.48	\$ 2,164.50	\$ 2,542.21	\$ 2,112.72	\$ 5,017.75	\$ 2,596.26				APR
MAY	\$ 1,598.46	\$ 1,217.88	\$ 1,593.29	\$ 2,219.83	\$ 1,142.29	\$ 1,327.10	\$ 5,019.25	\$ 1,229.84	\$ 1,113.80				MAY
JUN	\$ 2,117.21	\$ 1,266.68	\$ 885.64	\$ 894.68	\$ 1,357.60	\$ 2,146.86	\$ 1,136.40	\$ 1,006.79	\$ 1,478.65				JUN
JUL	\$ 943.55	\$ 2,111.37	\$ 2,197.51	\$ 781.89	\$ 1,490.44	\$ 1,443.93	\$ 1,032.94	\$ 1,067.76	\$ 1,241.34				JUL
AUG	\$ 939.07	\$ 2,302.10	\$ 1,385.31	\$ 764.89	\$ 1,140.50	\$ 735.70	\$ 655.85	\$ 946.90	\$ 948.33				AUG
SEP	\$ 586.54	\$ 915.04	\$ 872.63	\$ 1,681.35	\$ 578.43	\$ 598.99	\$ 1,124.89	\$ 652.17	\$ 700.21				SEP
TOTAL	\$335,635.71	\$329,283.42	\$347,091.53	\$357,113.20	\$367,527.68	\$373,665.08	\$383,648.16	\$391,568.19	\$399,755.97	\$ 52,256.58	\$10,807.90	26.08%	TOTAL

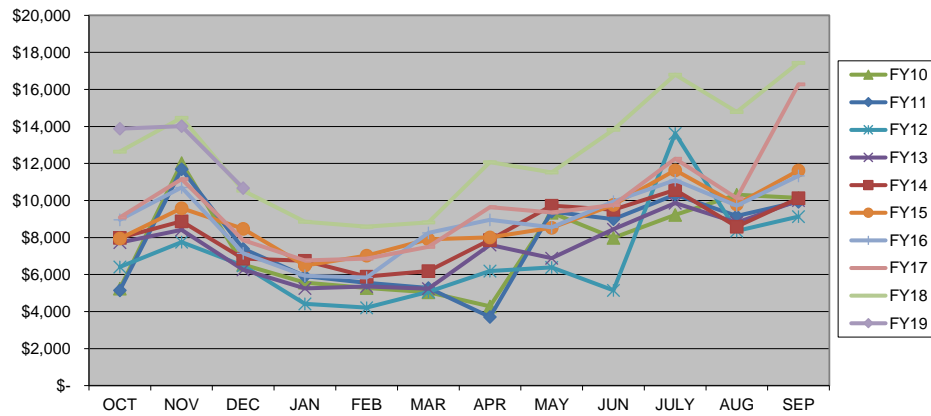


CITY OF WARRENSBURG LODGING TAX TEN YEAR COMPARISON



	FY10	FY11	FY12	FY13	FY14	FY15	FY16	FY17	FY18	FY19	CHANGE	%	
OCT	\$5,240.62	\$ 5,146.91	\$ 6,406.60	\$ 7,723.43	\$ 7,986.37	\$ 7,944.91	\$ 8,961.97	\$ 9,085.49	\$ 12,636.49	\$ 13,877.01	\$ 1,240.52	9.82%	OCT
NOV	\$12,029.25	\$11,691.14	\$ 7,756.13	\$ 8,415.18	\$ 8,871.14	\$ 9,579.17	\$ 10,703.06	\$ 11,154.30	\$ 14,468.77	\$ 14,015.82	\$ (452.95)	-3.13%	NOV
DEC	\$6,538.84	\$ 7,392.74	\$ 6,481.50	\$ 6,262.96	\$ 6,855.56	\$ 8,466.41	\$ 7,148.61	\$ 7,853.81	\$ 10,528.83	\$ 10,666.06	\$ 137.23	1.30%	DEC
JAN	\$5,563.32	\$ 5,910.17	\$ 4,413.01	\$ 5,252.02	\$ 6,743.77	\$ 6,486.34	\$ 5,933.36	\$ 6,761.43	\$ 8,856.81				JAN
FEB	\$5,274.90	\$ 5,549.30	\$ 4,213.85	\$ 5,350.15	\$ 5,892.83	\$ 7,022.53	\$ 5,841.01	\$ 6,859.50	\$ 8,585.46				FEB
MAR	\$5,041.05	\$ 5,270.31	\$ 5,062.21	\$ 5,233.70	\$ 6,191.44	\$ 7,906.67	\$ 8,244.96	\$ 7,494.34	\$ 8,820.73				MAR
APR	\$4,281.03	\$ 3,707.64	\$ 6,193.02	\$ 7,607.40	\$ 7,872.30	\$ 8,006.72	\$ 8,960.32	\$ 9,642.68	\$ 12,066.80				APR
MAY	\$9,343.60	\$ 9,399.92	\$ 6,382.92	\$ 6,881.96	\$ 9,724.76	\$ 8,523.28	\$ 8,549.17	\$ 9,345.76	\$ 11,512.11				MAY
JUN	\$7,988.99	\$ 8,986.65	\$ 5,146.29	\$ 8,443.39	\$ 9,506.14	\$ 9,766.52	\$ 9,943.30	\$ 9,755.36	\$ 13,826.67				JUN
JULY	\$9,227.35	\$10,307.07	\$13,618.72	\$ 9,862.72	\$10,571.90	\$ 11,636.91	\$ 11,094.25	\$ 12,252.02	\$ 16,799.73				JULY
AUG	\$10,313.45	\$ 9,160.62	\$ 8,357.75	\$ 8,809.59	\$ 8,581.40	\$ 9,787.08	\$ 9,724.77	\$ 10,131.03	\$ 14,783.69				AUG
SEP	\$10,133.74	\$ 9,927.77	\$ 9,133.46	\$ 9,995.08	\$10,130.43	\$ 11,619.68	\$ 11,328.39	\$ 16,271.16	\$ 17,440.58				SEP
TOTAL	\$90,976.14	\$92,450.24	\$83,165.46	\$89,837.58	\$98,928.04	\$106,746.22	\$106,433.17	\$116,606.88	\$150,326.67	\$ 38,558.89	\$ 924.80	2.46%	TOTAL

LODGING TAX TEN YEAR FISCAL



LODGING TAX TAXES RECEIVED

