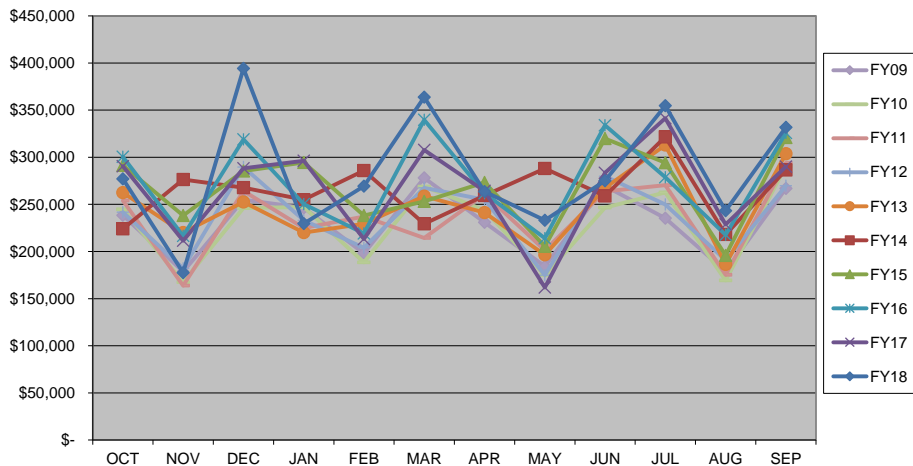


## CITY OF WARRENSBURG \*1 CENT SALES TEN YEAR COMPARISON

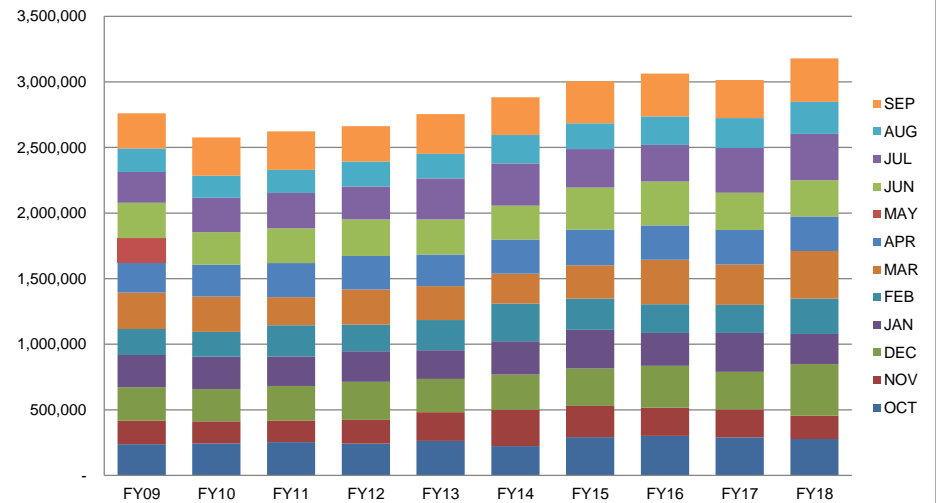


	FY09	FY10	FY11	FY12	FY13	FY14	FY15	FY16	FY17	FY18	CHANGE	%	
OCT	\$ 238,309.35	\$ 244,688.22	\$ 254,148.70	\$ 241,663.14	\$ 262,395.96	\$ 223,965.81	\$ 291,309.52	\$ 300,352.02	\$ 290,432.91	\$ 277,035.30	\$ (13,397.61)	-4.61%	OCT
NOV	\$ 178,544.03	\$ 167,652.30	\$ 163,749.90	\$ 182,051.90	\$ 220,033.60	\$ 276,423.19	\$ 238,145.41	\$ 216,601.32	\$ 211,424.44	\$ 177,540.63	\$ (33,883.81)	-16.03%	NOV
DEC	\$ 254,859.01	\$ 246,027.94	\$ 264,186.78	\$ 289,597.56	\$ 252,544.84	\$ 267,827.30	\$ 285,374.94	\$ 319,019.14	\$ 288,310.36	\$ 394,139.78	\$ 105,829.42	36.71%	DEC
JAN	\$ 246,243.41	\$ 247,262.22	\$ 224,848.38	\$ 233,058.35	\$ 220,025.84	\$ 255,013.31	\$ 294,539.60	\$ 250,241.32	\$ 296,111.08	\$ 229,462.01	\$ (66,649.07)	-22.51%	JAN
FEB	\$ 197,933.11	\$ 188,509.33	\$ 237,079.09	\$ 203,878.27	\$ 229,347.32	\$ 285,929.58	\$ 238,250.72	\$ 219,096.17	\$ 213,215.16	\$ 269,203.71	\$ 55,988.55	26.26%	FEB
MAR	\$ 278,025.18	\$ 268,934.91	\$ 214,440.24	\$ 267,574.99	\$ 258,746.18	\$ 229,349.91	\$ 253,219.95	\$ 339,600.73	\$ 307,664.21	\$ 363,836.04	\$ 56,171.83	18.26%	MAR
APR	\$ 230,989.82	\$ 243,953.28	\$ 260,881.61	\$ 254,868.76	\$ 241,309.70	\$ 259,439.94	\$ 273,340.61	\$ 261,812.55	\$ 264,157.95	\$ 263,457.37	\$ (700.58)	-0.27%	APR
MAY	\$ 184,431.43	\$ 174,752.45	\$ 201,427.79	\$ 174,935.23	\$ 196,492.75	\$ 288,104.51	\$ 205,450.09	\$ 214,086.04	\$ 161,834.43	\$ 233,179.18	\$ 71,344.75	44.09%	MAY
JUN	\$ 269,608.15	\$ 246,524.10	\$ 263,698.84	\$ 279,936.42	\$ 267,505.55	\$ 258,915.52	\$ 319,728.73	\$ 334,068.59	\$ 283,382.60	\$ 275,050.27	\$ (8,332.33)	-2.94%	JUN
JUL	\$ 235,248.81	\$ 262,779.87	\$ 270,375.74	\$ 249,964.18	\$ 312,893.75	\$ 321,626.49	\$ 294,159.03	\$ 278,860.86	\$ 341,411.81	\$ 354,778.37	\$ 13,366.56	3.92%	JUL
AUG	\$ 178,977.54	\$ 169,230.56	\$ 175,320.92	\$ 190,637.98	\$ 186,223.91	\$ 218,005.63	\$ 195,901.22	\$ 217,673.85	\$ 228,583.89	\$ 243,192.76	\$ 14,608.87	6.39%	AUG
SEP	\$ 266,941.48	\$ 290,555.54	\$ 294,001.64	\$ 269,733.79	\$ 303,619.30	\$ 286,494.71	\$ 320,967.17	\$ 325,860.80	\$ 289,997.56	\$ 331,796.69	\$ 41,799.13	14.41%	SEP
<b>TOTAL</b>	<b>\$ 2,760,111.32</b>	<b>\$ 2,750,870.72</b>	<b>\$ 2,824,159.63</b>	<b>\$ 2,837,900.57</b>	<b>\$ 2,951,138.70</b>	<b>\$ 3,171,095.90</b>	<b>\$ 3,210,386.99</b>	<b>\$ 3,277,273.39</b>	<b>\$ 3,176,526.40</b>	<b>\$ 3,412,672.11</b>	<b>\$ 236,145.71</b>	<b>7.43%</b>	<b>TOTAL</b>

1 CENT SALES TEN YEAR FISCAL



1 CENT SALES TAXES RECEIVED

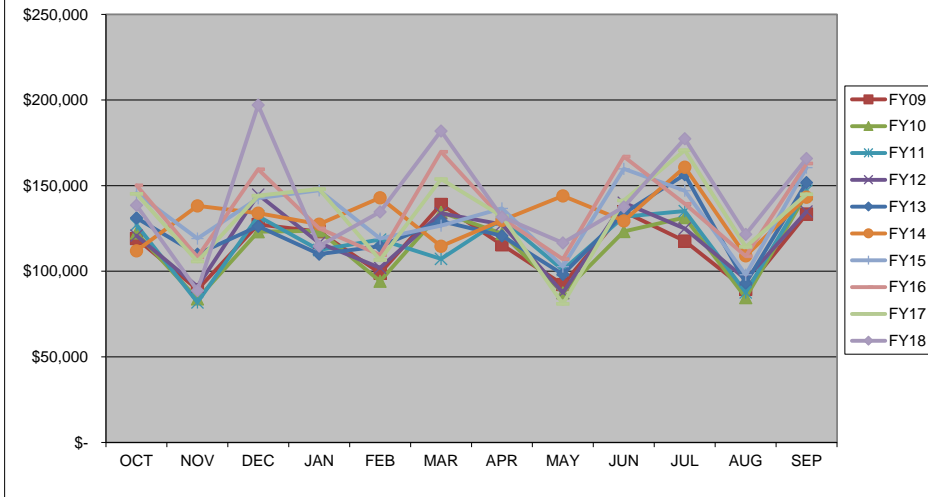


## CITY OF WARRENSBURG \*1/2 CENT SALES TEN YEAR COMPARISON

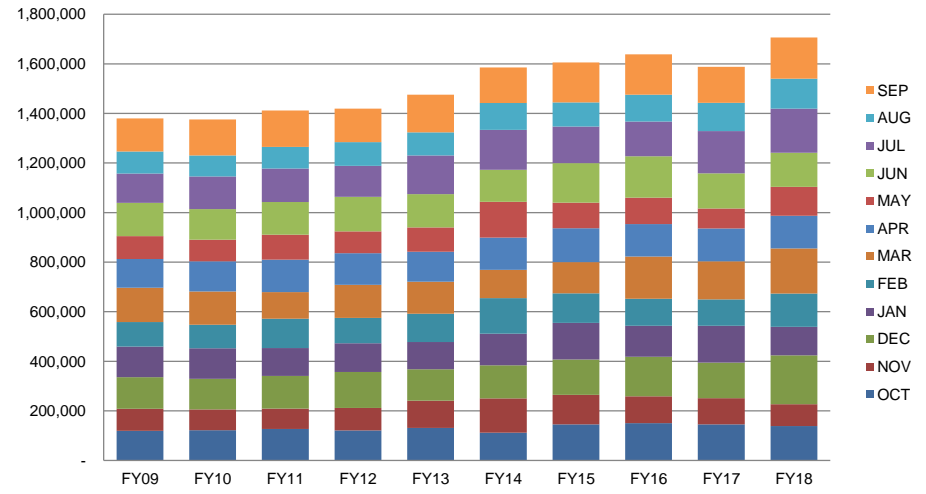


	FY09	FY10	FY11	FY12	FY13	FY14	FY15	FY16	FY17	FY18	CHANGE	%	
OCT	\$ 119,154.79	\$ 122,344.20	\$ 127,074.32	\$ 120,831.68	\$ 131,197.84	\$ 111,983.09	\$ 145,654.68	\$ 150,176.28	\$ 145,216.65	\$ 138,517.76	\$ (6,698.89)	-4.61%	OCT
NOV	\$ 89,271.92	\$ 83,826.21	\$ 81,875.07	\$ 91,025.98	\$ 110,016.80	\$ 138,211.48	\$ 119,072.69	\$ 108,300.84	\$ 105,712.23	\$ 88,769.99	\$ (16,942.24)	-16.03%	NOV
DEC	\$ 127,429.33	\$ 123,068.24	\$ 132,093.33	\$ 144,798.86	\$ 126,272.31	\$ 133,913.51	\$ 142,687.52	\$ 159,509.74	\$ 144,155.35	\$ 197,069.71	\$ 52,914.36	36.71%	DEC
JAN	\$ 123,121.53	\$ 123,630.95	\$ 112,424.01	\$ 116,528.87	\$ 110,013.12	\$ 127,506.60	\$ 147,270.08	\$ 125,120.62	\$ 148,055.79	\$ 114,731.10	\$ (33,324.69)	-22.51%	JAN
FEB	\$ 98,966.36	\$ 94,254.53	\$ 118,539.57	\$ 101,939.20	\$ 114,673.58	\$ 142,964.83	\$ 119,125.33	\$ 109,548.28	\$ 106,607.60	\$ 134,601.87	\$ 27,994.27	26.26%	FEB
MAR	\$ 139,012.52	\$ 134,387.35	\$ 107,220.13	\$ 133,791.41	\$ 129,373.00	\$ 114,669.70	\$ 126,605.69	\$ 169,800.49	\$ 153,829.54	\$ 181,918.09	\$ 28,088.55	18.26%	MAR
APR	\$ 115,480.25	\$ 121,976.81	\$ 130,434.75	\$ 127,424.88	\$ 120,648.44	\$ 129,717.13	\$ 136,670.24	\$ 130,906.51	\$ 132,079.16	\$ 131,728.51	\$ (350.65)	-0.27%	APR
MAY	\$ 92,215.78	\$ 87,376.39	\$ 100,714.08	\$ 87,466.47	\$ 98,246.54	\$ 144,052.54	\$ 102,725.05	\$ 107,034.41	\$ 80,917.38	\$ 116,589.61	\$ 35,672.23	44.08%	MAY
JUN	\$ 134,804.08	\$ 123,262.09	\$ 131,831.01	\$ 139,953.69	\$ 133,753.04	\$ 129,451.06	\$ 159,864.25	\$ 167,028.61	\$ 141,291.28	\$ 137,525.10	\$ (3,766.18)	-2.67%	JUN
JUL	\$ 117,624.42	\$ 131,390.12	\$ 135,187.91	\$ 124,982.01	\$ 156,445.40	\$ 160,813.34	\$ 147,079.69	\$ 139,430.42	\$ 170,695.02	\$ 177,389.18	\$ 6,694.16	3.92%	JUL
AUG	\$ 89,488.65	\$ 84,615.30	\$ 87,660.41	\$ 95,319.04	\$ 93,111.83	\$ 109,002.66	\$ 97,950.67	\$ 108,836.84	\$ 114,281.02	\$ 121,596.73	\$ 7,315.71	6.40%	AUG
SEP	\$ 133,470.94	\$ 145,277.87	\$ 147,000.95	\$ 134,867.11	\$ 151,804.17	\$ 143,247.57	\$ 160,483.47	\$ 162,930.65	\$ 144,998.94	\$ 165,898.45	\$ 20,899.51	14.41%	SEP
<b>TOTAL</b>	<b>\$ 1,380,040.57</b>	<b>\$ 1,375,410.06</b>	<b>\$ 1,412,055.54</b>	<b>\$ 1,418,929.20</b>	<b>\$ 1,475,556.07</b>	<b>\$ 1,585,533.51</b>	<b>\$ 1,605,189.36</b>	<b>\$ 1,638,623.69</b>	<b>\$ 1,587,839.96</b>	<b>\$ 1,706,336.10</b>	<b>\$ 118,496.14</b>	<b>7.46%</b>	<b>TOTAL</b>

**1/2 CENT SALES FIVE YEAR FISCAL**



**1/2 CENT SALES TAXES RECEIVED**

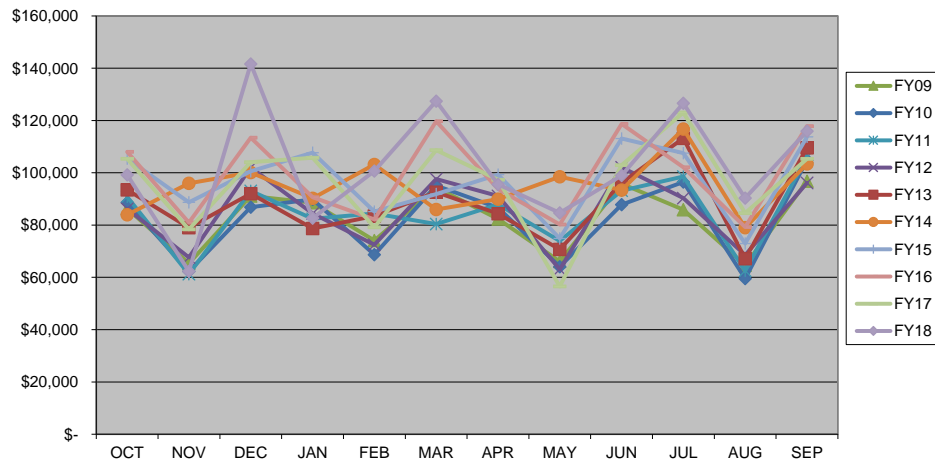


## CITY OF WARRENSBURG \*3/8 CENT SALES TEN YEAR COMPARISON

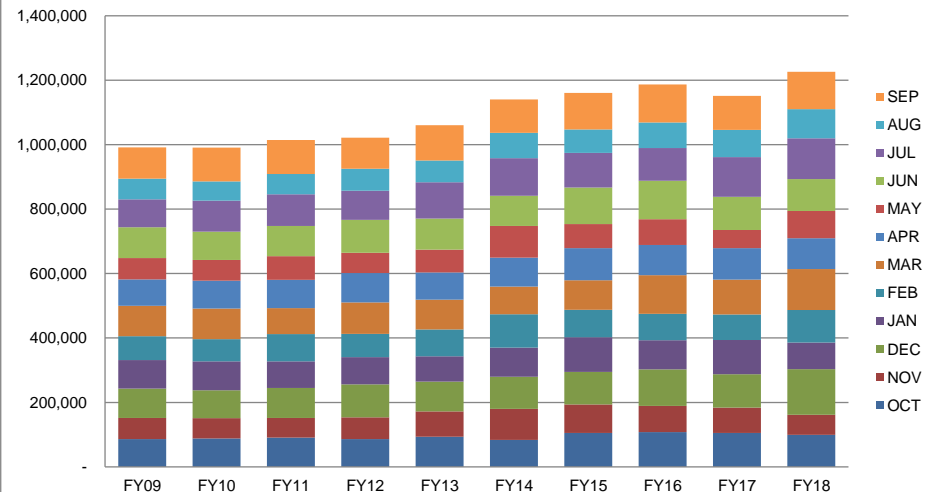


	FY09	FY10	FY11	FY12	FY13	FY14	FY15	FY16	FY17	FY18	CHANGE	%	
OCT	\$ 86,266.22	\$ 88,625.20	\$ 90,814.07	\$ 86,189.33	\$ 93,465.69	\$ 83,936.23	\$ 105,422.83	\$ 107,993.82	\$ 105,377.24	\$ 99,242.10	\$ (6,135.14)	-5.82%	OCT
NOV	\$ 65,378.70	\$ 62,313.32	\$ 61,217.93	\$ 67,637.85	\$ 78,992.03	\$ 95,992.27	\$ 88,737.16	\$ 80,964.79	\$ 78,354.36	\$ 62,317.52	\$ (16,036.84)	-20.47%	NOV
DEC	\$ 91,120.19	\$ 86,832.31	\$ 93,118.23	\$ 102,057.84	\$ 91,997.57	\$ 100,103.74	\$ 100,560.75	\$ 113,408.87	\$ 104,098.29	\$ 141,643.09	\$ 37,544.80	36.07%	DEC
JAN	\$ 88,584.55	\$ 89,836.99	\$ 82,384.34	\$ 84,469.04	\$ 78,689.20	\$ 90,220.18	\$ 107,726.80	\$ 90,666.80	\$ 105,762.86	\$ 82,643.20	\$ (23,119.66)	-21.86%	JAN
FEB	\$ 74,077.05	\$ 68,711.34	\$ 84,465.41	\$ 72,484.04	\$ 83,486.85	\$ 103,219.69	\$ 85,148.34	\$ 82,150.10	\$ 79,204.48	\$ 100,682.66	\$ 21,478.18	27.12%	FEB
MAR	\$ 94,356.18	\$ 95,064.03	\$ 80,414.64	\$ 97,609.07	\$ 92,583.73	\$ 85,991.73	\$ 91,879.55	\$ 119,713.66	\$ 108,704.25	\$ 127,429.96	\$ 18,725.71	17.23%	MAR
APR	\$ 82,342.02	\$ 86,603.59	\$ 87,948.83	\$ 91,179.39	\$ 84,330.44	\$ 89,923.49	\$ 99,288.84	\$ 93,822.27	\$ 97,331.52	\$ 95,571.47	\$ (1,760.05)	-1.81%	APR
MAY	\$ 66,079.73	\$ 64,069.49	\$ 73,916.39	\$ 63,071.14	\$ 70,707.30	\$ 98,496.17	\$ 74,867.23	\$ 80,275.00	\$ 56,525.77	\$ 84,712.82	\$ 28,187.05	49.87%	MAY
JUN	\$ 95,855.92	\$ 87,815.16	\$ 93,178.89	\$ 102,100.92	\$ 96,244.12	\$ 93,367.55	\$ 113,081.19	\$ 118,727.93	\$ 102,978.01	\$ 98,968.83	\$ (4,009.18)	-3.89%	JUN
JUL	\$ 85,926.39	\$ 96,476.96	\$ 98,612.33	\$ 90,305.51	\$ 113,223.39	\$ 116,755.95	\$ 107,530.80	\$ 102,127.07	\$ 123,032.59	\$ 126,639.46	\$ 3,606.87	2.93%	JUL
AUG	\$ 64,625.41	\$ 59,521.27	\$ 62,578.40	\$ 68,553.90	\$ 67,134.73	\$ 79,002.18	\$ 72,948.55	\$ 79,230.19	\$ 84,598.76	\$ 90,330.78	\$ 5,732.02	6.78%	AUG
SEP	\$ 96,809.90	\$ 104,850.25	\$ 106,112.31	\$ 96,171.11	\$ 109,587.86	\$ 103,401.28	\$ 113,775.48	\$ 117,872.86	\$ 105,337.95	\$ 115,936.67	\$ 10,598.72	10.06%	SEP
<b>TOTAL</b>	<b>\$ 991,422.26</b>	<b>\$ 990,719.91</b>	<b>\$1,014,761.77</b>	<b>\$1,021,829.14</b>	<b>\$1,060,442.91</b>	<b>\$1,140,410.46</b>	<b>\$1,160,967.52</b>	<b>\$1,186,953.36</b>	<b>\$1,151,306.08</b>	<b>\$1,226,118.56</b>	<b>\$ 74,812.48</b>	<b>6.50%</b>	<b>TOTAL</b>

3/8 CENT SALES TEN YEAR FISCAL



3/8 CENT SALES TAXES RECEIVED

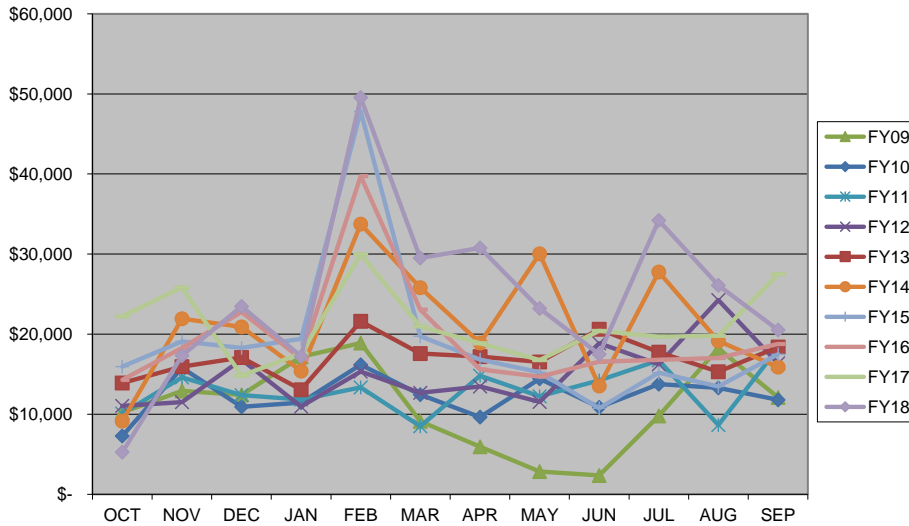


# CITY OF WARRENSBURG 1 CENT USE TEN YEAR COMPARISON

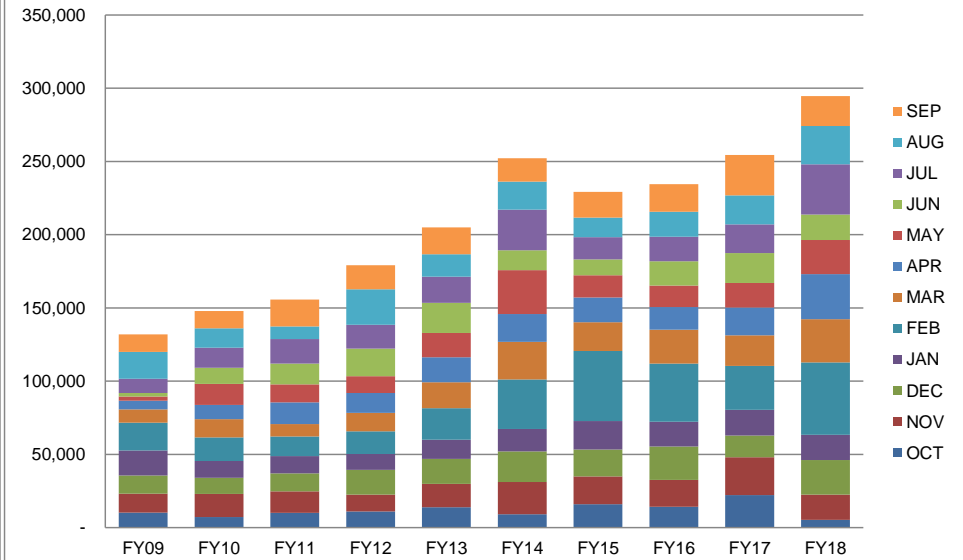


	FY09	FY10	FY11	FY12	FY13	FY14	FY15	FY16	FY17	FY18	CHANGE	%	
OCT	\$ 10,220.44	\$ 7,284.72	\$ 10,074.41	\$ 11,056.06	\$ 13,900.06	\$ 9,143.52	\$ 15,961.68	\$ 14,297.21	\$ 22,204.92	\$ 5,257.26	\$ (16,947.66)	-76.32%	OCT
NOV	\$ 12,912.20	\$ 15,791.50	\$ 14,619.51	\$ 11,525.73	\$ 15,955.74	\$ 21,934.11	\$ 19,083.78	\$ 18,292.66	\$ 25,830.18	\$ 17,327.71	\$ (8,502.47)	-32.92%	NOV
DEC	\$ 12,422.83	\$ 10,923.11	\$ 12,375.09	\$ 16,808.54	\$ 17,075.51	\$ 20,893.01	\$ 18,277.23	\$ 22,768.53	\$ 14,826.63	\$ 23,477.96	\$ 8,651.33	58.35%	DEC
JAN	\$ 17,159.65	\$ 11,441.77	\$ 11,830.11	\$ 10,964.18	\$ 13,072.57	\$ 15,384.22	\$ 19,412.67	\$ 16,908.80	\$ 17,578.20	\$ 17,230.49	\$ (347.71)	-1.98%	JAN
FEB	\$ 18,888.82	\$ 16,186.67	\$ 13,341.86	\$ 15,326.27	\$ 21,592.46	\$ 33,738.68	\$ 47,815.98	\$ 39,738.90	\$ 29,977.33	\$ 49,539.04	\$ 19,561.71	65.26%	FEB
MAR	\$ 9,129.36	\$ 12,454.43	\$ 8,503.10	\$ 12,687.35	\$ 17,579.43	\$ 25,803.07	\$ 19,731.46	\$ 23,052.54	\$ 20,953.42	\$ 29,507.54	\$ 8,554.12	40.82%	MAR
APR	\$ 5,942.41	\$ 9,645.73	\$ 14,813.61	\$ 13,464.09	\$ 17,199.63	\$ 18,897.80	\$ 16,811.78	\$ 15,592.06	\$ 18,874.61	\$ 30,779.50	\$ 11,904.89	63.07%	APR
MAY	\$ 2,859.36	\$ 14,444.00	\$ 12,252.52	\$ 11,539.63	\$ 16,520.19	\$ 30,031.20	\$ 15,257.19	\$ 14,694.11	\$ 16,758.71	\$ 23,208.09	\$ 6,449.38	38.48%	MAY
JUN	\$ 2,363.36	\$ 10,886.29	\$ 14,223.58	\$ 18,872.40	\$ 20,623.89	\$ 13,515.76	\$ 10,750.07	\$ 16,553.81	\$ 20,400.29	\$ 17,490.23	\$ (2,910.06)	-14.26%	JUN
JUL	\$ 9,796.82	\$ 13,748.10	\$ 16,727.42	\$ 16,234.34	\$ 17,766.36	\$ 27,751.05	\$ 15,201.88	\$ 16,793.68	\$ 19,675.12	\$ 34,222.43	\$ 14,547.31	73.94%	JUL
AUG	\$ 18,218.20	\$ 13,285.08	\$ 8,667.13	\$ 24,256.14	\$ 15,313.50	\$ 19,162.04	\$ 13,467.18	\$ 17,022.58	\$ 19,792.30	\$ 26,103.60	\$ 6,311.30	31.89%	AUG
SEP	\$ 12,083.19	\$ 11,802.90	\$ 18,239.91	\$ 16,342.89	\$ 18,390.66	\$ 15,902.92	\$ 17,496.69	\$ 18,779.33	\$ 27,510.52	\$ 20,514.14	\$ (6,996.38)	-25.43%	SEP
<b>TOTAL</b>	<b>\$131,996.64</b>	<b>\$147,894.30</b>	<b>\$155,668.25</b>	<b>\$179,077.62</b>	<b>\$204,990.00</b>	<b>\$252,157.38</b>	<b>\$229,267.59</b>	<b>\$234,494.21</b>	<b>\$254,382.23</b>	<b>\$294,657.99</b>	<b>\$ 40,275.76</b>	<b>15.83%</b>	<b>TOTAL</b>

**1 CENT USE TEN YEAR FISCAL**



**1 CENT USE TAXES RECEIVED**

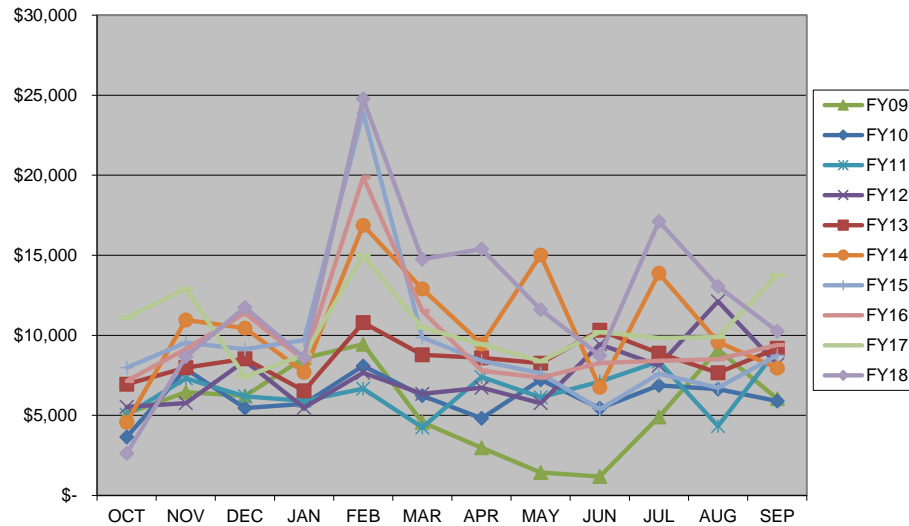


# CITY OF WARRENSBURG 1/2 CENT USE TEN YEAR COMPARISON

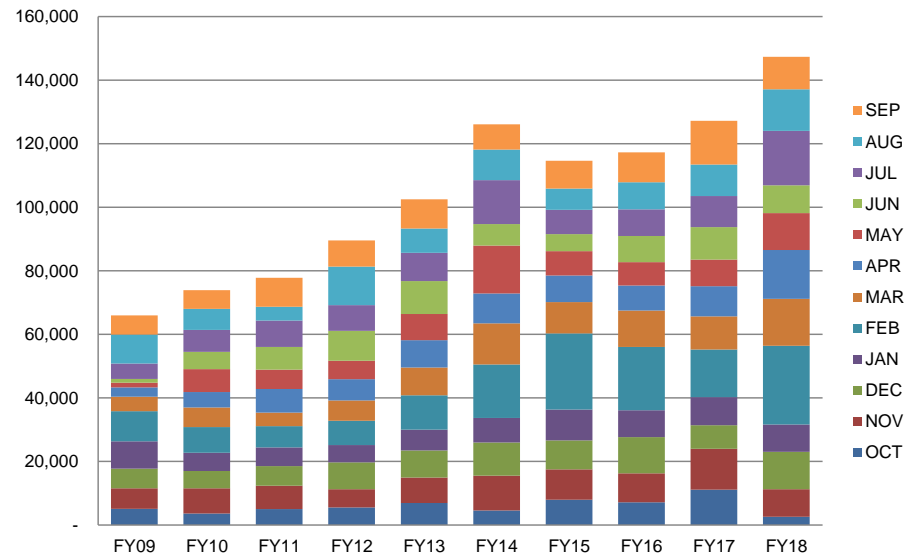


	FY09	FY10	FY11	FY12	FY13	FY14	FY15	FY16	FY17	FY18	CHANGE	%	
OCT	\$ 5,109.28	\$ 3,641.69	\$ 5,036.27	\$ 5,527.00	\$ 6,948.75	\$ 4,570.92	\$ 7,982.34	\$ 7,149.94	\$ 11,104.54	\$ 2,629.12	\$ (8,475.42)	-76.32%	OCT
NOV	\$ 6,454.91	\$ 7,894.29	\$ 7,308.41	\$ 5,761.80	\$ 7,976.39	\$ 10,965.03	\$ 9,543.68	\$ 9,148.04	\$ 12,917.51	\$ 8,665.48	\$ (4,252.03)	-32.92%	NOV
DEC	\$ 6,210.27	\$ 5,460.54	\$ 6,186.40	\$ 8,402.72	\$ 8,536.18	\$ 10,444.57	\$ 9,140.33	\$ 11,386.40	\$ 7,414.70	\$ 11,741.19	\$ 4,326.49	58.35%	DEC
JAN	\$ 8,578.24	\$ 5,719.83	\$ 5,913.96	\$ 5,481.08	\$ 6,535.08	\$ 7,690.69	\$ 9,708.15	\$ 8,455.98	\$ 8,790.75	\$ 8,616.86	\$ (173.89)	-1.98%	JAN
FEB	\$ 9,442.66	\$ 8,091.84	\$ 6,669.70	\$ 7,661.71	\$ 10,794.23	\$ 16,872.50	\$ 23,912.47	\$ 19,873.18	\$ 14,991.48	\$ 24,774.16	\$ 9,782.68	65.25%	FEB
MAR	\$ 4,563.83	\$ 6,226.06	\$ 4,250.77	\$ 6,342.50	\$ 8,788.09	\$ 12,903.96	\$ 9,867.58	\$ 11,528.43	\$ 10,478.67	\$ 14,756.54	\$ 4,277.87	40.82%	MAR
APR	\$ 2,970.66	\$ 4,821.98	\$ 7,405.44	\$ 6,730.80	\$ 8,598.23	\$ 9,450.67	\$ 8,407.47	\$ 7,797.49	\$ 9,439.07	\$ 15,392.63	\$ 5,953.56	63.07%	APR
MAY	\$ 1,429.42	\$ 7,220.66	\$ 6,125.13	\$ 5,768.75	\$ 8,258.57	\$ 15,018.42	\$ 7,630.03	\$ 7,348.43	\$ 8,380.93	\$ 11,606.22	\$ 3,225.29	38.48%	MAY
JUN	\$ 1,181.46	\$ 5,442.13	\$ 7,110.47	\$ 9,434.45	\$ 10,310.04	\$ 6,759.15	\$ 5,376.05	\$ 8,278.46	\$ 10,202.06	\$ 8,746.75	\$ (1,455.31)	-14.26%	JUN
JUL	\$ 4,897.51	\$ 6,872.78	\$ 8,362.16	\$ 8,115.67	\$ 8,881.54	\$ 13,878.12	\$ 7,602.37	\$ 8,398.42	\$ 9,839.40	\$ 17,114.42	\$ 7,275.02	73.94%	JUL
AUG	\$ 9,107.41	\$ 6,641.31	\$ 4,332.77	\$ 12,125.82	\$ 7,655.33	\$ 9,582.82	\$ 6,734.85	\$ 8,512.89	\$ 9,898.00	\$ 13,054.25	\$ 3,156.25	31.89%	AUG
SEP	\$ 6,040.47	\$ 5,900.36	\$ 9,118.27	\$ 8,169.93	\$ 9,193.63	\$ 7,952.95	\$ 8,749.98	\$ 9,391.42	\$ 13,757.84	\$ 10,259.00	\$ (3,498.84)	-25.43%	SEP
<b>TOTAL</b>	<b>\$ 65,986.12</b>	<b>\$ 73,933.47</b>	<b>\$ 77,819.75</b>	<b>\$ 89,522.23</b>	<b>\$ 102,476.06</b>	<b>\$ 126,089.80</b>	<b>\$ 114,655.30</b>	<b>\$ 117,269.08</b>	<b>\$ 127,214.95</b>	<b>\$ 147,356.62</b>	<b>\$ 20,141.67</b>	<b>15.83%</b>	<b>TOTAL</b>

**1/2 CENT TEN YEAR FISCAL**



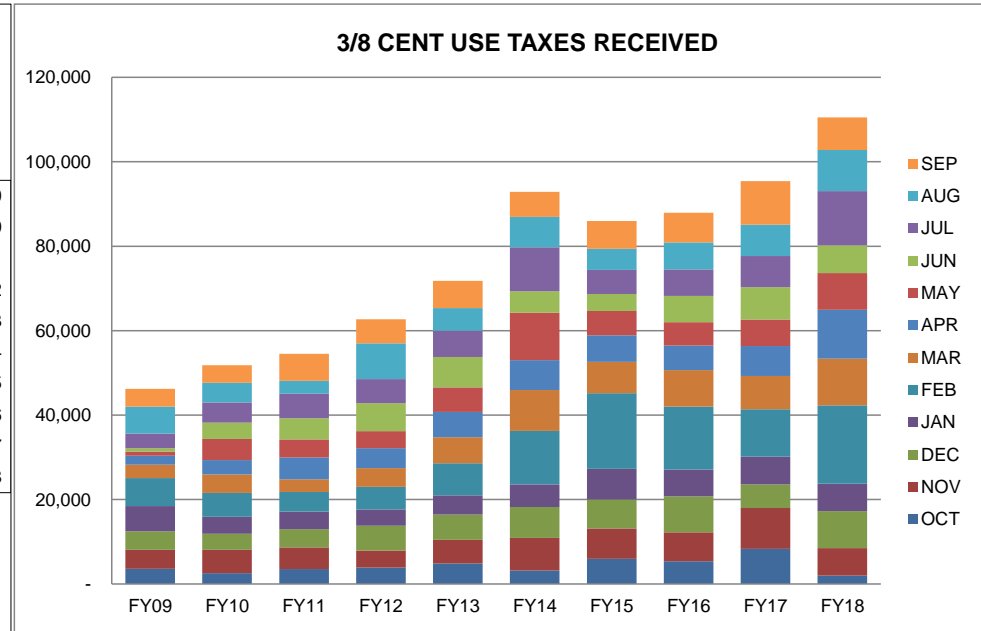
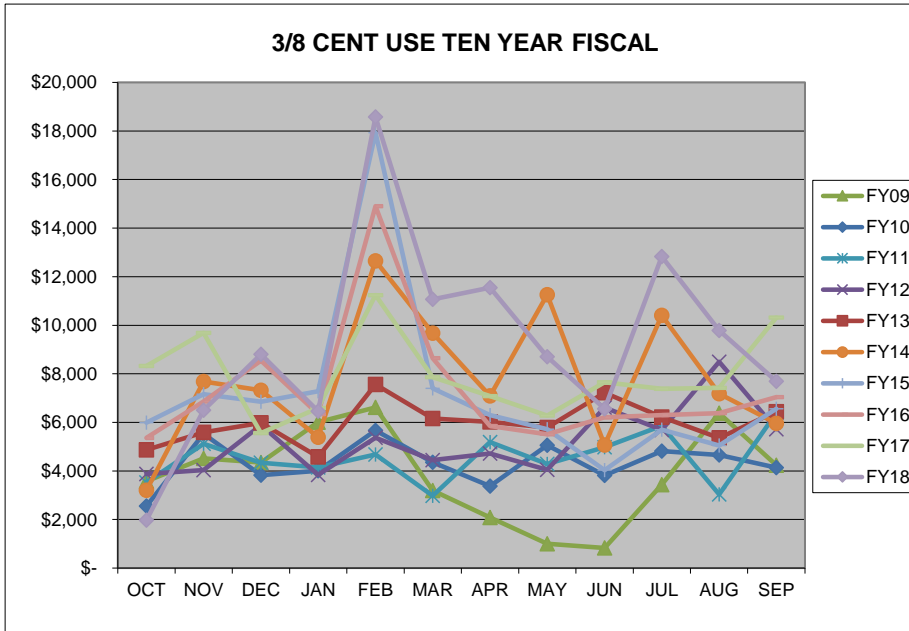
**1/2 CENT USE TAXES RECEIVED**



## CITY OF WARRENSBURG 3/8 CENT USE TEN YEAR COMPARISON



	FY09	FY10	FY11	FY12	FY13	FY14	FY15	FY16	FY17	FY18	CHANGE	%	
OCT	\$ 3,579.52	\$ 2,551.34	\$ 3,528.37	\$ 3,872.18	\$ 4,868.24	\$ 3,202.35	\$ 5,986.01	\$ 5,361.79	\$ 8,327.37	\$ 1,971.59	\$ (6,355.78)	-76.32%	OCT
NOV	\$ 4,522.25	\$ 5,530.68	\$ 5,120.21	\$ 4,036.67	\$ 5,588.20	\$ 7,682.01	\$ 7,156.86	\$ 6,860.18	\$ 9,686.92	\$ 6,498.29	\$ (3,188.63)	-32.92%	NOV
DEC	\$ 4,350.86	\$ 3,825.62	\$ 4,334.14	\$ 5,886.88	\$ 5,980.38	\$ 7,317.38	\$ 6,854.39	\$ 8,538.73	\$ 5,560.33	\$ 8,804.79	\$ 3,244.46	58.35%	DEC
JAN	\$ 6,009.84	\$ 4,007.27	\$ 4,143.27	\$ 3,840.00	\$ 4,578.42	\$ 5,388.03	\$ 7,280.21	\$ 6,341.20	\$ 6,592.23	\$ 6,461.84	\$ (130.39)	-1.98%	JAN
FEB	\$ 6,615.45	\$ 5,669.08	\$ 4,672.74	\$ 5,367.74	\$ 7,562.35	\$ 12,652.80	\$ 17,932.11	\$ 14,903.02	\$ 11,242.20	\$ 18,578.30	\$ 7,336.10	65.26%	FEB
MAR	\$ 3,197.39	\$ 4,361.93	\$ 2,978.05	\$ 4,443.51	\$ 6,156.87	\$ 9,676.76	\$ 7,399.76	\$ 8,645.24	\$ 7,858.02	\$ 11,066.02	\$ 3,208.00	40.82%	MAR
APR	\$ 2,081.22	\$ 3,378.24	\$ 5,188.19	\$ 4,715.55	\$ 6,023.85	\$ 7,087.12	\$ 6,304.81	\$ 5,847.39	\$ 7,078.42	\$ 11,543.03	\$ 4,464.61	63.07%	APR
MAY	\$ 1,001.44	\$ 5,058.74	\$ 4,291.21	\$ 4,041.54	\$ 5,785.89	\$ 11,262.41	\$ 5,721.80	\$ 5,510.63	\$ 6,284.91	\$ 8,703.58	\$ 2,418.67	38.48%	MAY
JUN	\$ 827.73	\$ 3,812.72	\$ 4,981.54	\$ 6,609.71	\$ 7,223.13	\$ 5,068.72	\$ 4,031.53	\$ 6,208.07	\$ 7,650.59	\$ 6,559.25	\$ (1,091.34)	-14.26%	JUN
JUL	\$ 3,431.15	\$ 4,815.01	\$ 5,858.47	\$ 5,685.78	\$ 6,222.33	\$ 10,407.29	\$ 5,701.06	\$ 6,298.02	\$ 7,378.63	\$ 12,834.21	\$ 5,455.58	73.94%	JUL
AUG	\$ 6,380.58	\$ 4,652.85	\$ 3,035.50	\$ 8,495.26	\$ 5,363.27	\$ 7,186.22	\$ 5,050.51	\$ 6,383.87	\$ 7,422.58	\$ 9,789.46	\$ 2,366.88	31.89%	AUG
SEP	\$ 4,231.91	\$ 4,133.75	\$ 6,388.19	\$ 5,723.79	\$ 6,440.98	\$ 5,963.97	\$ 6,561.67	\$ 7,042.69	\$ 10,317.09	\$ 7,693.28	\$ (2,623.81)	-25.43%	SEP
<b>TOTAL</b>	<b>\$46,229.34</b>	<b>\$51,797.23</b>	<b>\$54,519.88</b>	<b>\$62,718.61</b>	<b>\$ 71,793.91</b>	<b>\$ 92,895.06</b>	<b>\$ 85,980.72</b>	<b>\$87,940.83</b>	<b>\$95,399.29</b>	<b>\$110,503.64</b>	<b>\$ 15,104.35</b>	<b>15.83%</b>	<b>TOTAL</b>

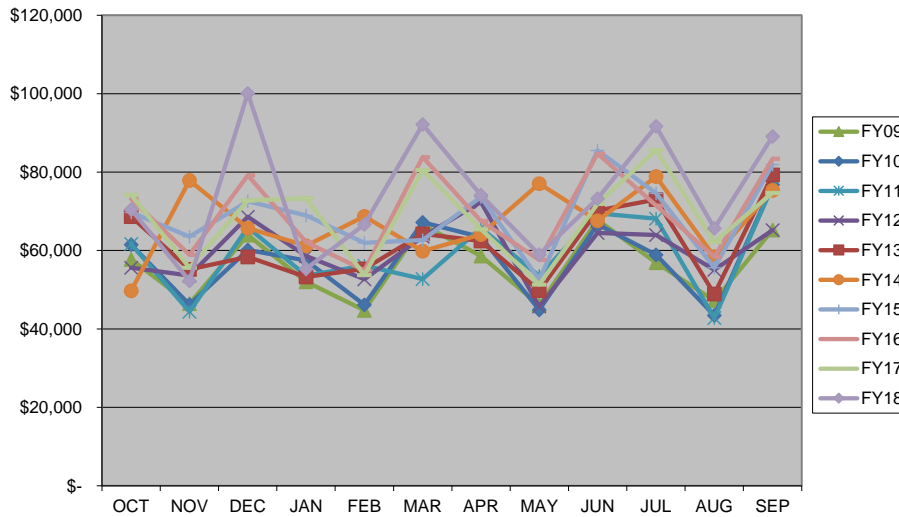


# CITY OF WARRENSBURG LAW ENFORCEMENT TEN YEAR COMPARISON

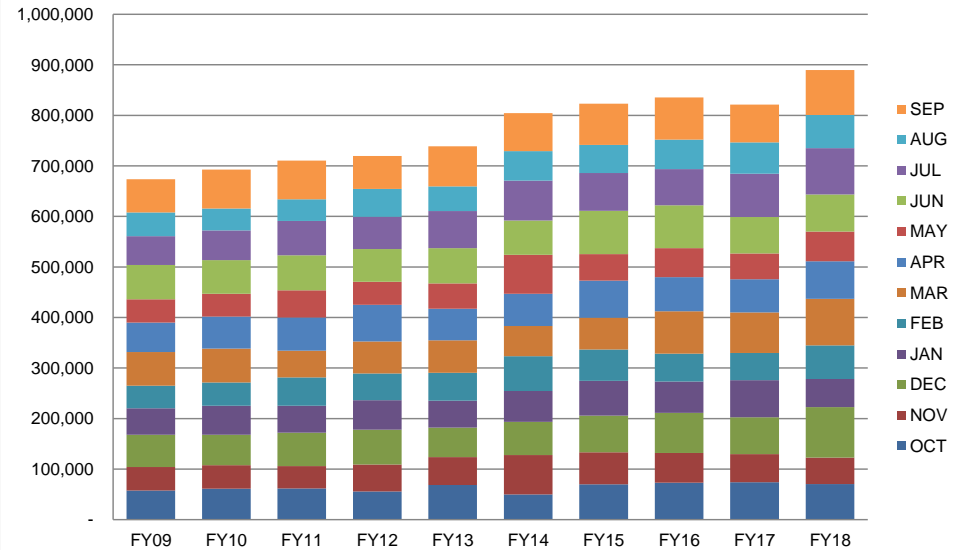


	FY09	FY10	FY11	FY12	FY13	FY14	FY15	FY16	FY17	FY18	CHANGE	%	
OCT	\$ 57,712.10	\$ 61,468.01	\$ 61,672.18	\$ 55,646.53	\$ 68,648.72	\$ 49,734.02	\$ 69,740.56	\$ 73,177.08	\$ 74,169.96	\$ 70,492.57	\$ (3,677.39)	-4.96%	OCT
NOV	\$ 46,448.53	\$ 46,188.96	\$ 44,374.74	\$ 53,633.60	\$ 55,212.92	\$ 77,887.02	\$ 63,532.50	\$ 58,894.22	\$ 55,595.27	\$ 52,280.94	\$ (3,314.33)	-5.96%	NOV
DEC	\$ 63,968.44	\$ 60,138.98	\$ 65,879.76	\$ 68,590.40	\$ 58,370.64	\$ 65,709.45	\$ 72,535.63	\$ 79,184.98	\$ 72,791.45	\$ 100,119.52	\$ 27,328.07	37.54%	DEC
JAN	\$ 52,054.61	\$ 57,451.03	\$ 53,637.12	\$ 58,621.47	\$ 53,269.01	\$ 61,204.89	\$ 68,952.60	\$ 62,138.58	\$ 73,293.44	\$ 55,325.38	\$ (17,968.06)	-24.52%	JAN
FEB	\$ 44,749.98	\$ 46,142.33	\$ 56,141.64	\$ 52,660.81	\$ 55,330.96	\$ 68,707.24	\$ 61,982.30	\$ 54,930.81	\$ 53,749.36	\$ 66,673.84	\$ 12,924.48	24.05%	FEB
MAR	\$ 66,549.41	\$ 67,169.02	\$ 52,714.05	\$ 63,526.08	\$ 64,281.82	\$ 59,850.51	\$ 62,673.10	\$ 83,803.95	\$ 80,502.75	\$ 92,142.87	\$ 11,640.12	14.46%	MAR
APR	\$ 58,611.30	\$ 63,428.59	\$ 65,714.41	\$ 72,355.32	\$ 62,409.29	\$ 64,069.15	\$ 73,651.81	\$ 67,565.62	\$ 65,452.50	\$ 74,151.28	\$ 8,698.78	13.29%	APR
MAY	\$ 46,101.19	\$ 44,859.76	\$ 53,515.81	\$ 45,732.81	\$ 49,808.18	\$ 77,051.67	\$ 52,566.73	\$ 57,599.71	\$ 51,343.45	\$ 58,958.71	\$ 7,615.26	14.83%	MAY
JUN	\$ 67,801.81	\$ 66,636.85	\$ 69,490.44	\$ 64,469.03	\$ 70,162.15	\$ 67,583.98	\$ 85,528.20	\$ 84,711.15	\$ 71,905.69	\$ 73,249.53	\$ 1,343.84	1.87%	JUN
JUL	\$ 56,920.47	\$ 58,891.66	\$ 68,118.27	\$ 63,953.45	\$ 73,007.64	\$ 78,859.70	\$ 74,596.87	\$ 71,509.19	\$ 85,628.15	\$ 91,680.94	\$ 6,052.79	7.07%	JUL
AUG	\$ 47,231.75	\$ 43,454.26	\$ 42,789.13	\$ 55,074.31	\$ 48,900.29	\$ 58,419.92	\$ 55,602.98	\$ 58,375.82	\$ 62,219.29	\$ 65,662.95	\$ 3,443.66	5.53%	AUG
SEP	\$ 65,271.15	\$ 76,761.01	\$ 76,405.13	\$ 65,179.62	\$ 79,282.17	\$ 75,385.36	\$ 81,916.16	\$ 83,389.29	\$ 74,742.70	\$ 89,108.85	\$ 14,366.15	19.22%	SEP
<b>TOTAL</b>	<b>\$673,420.74</b>	<b>\$692,590.46</b>	<b>\$710,452.68</b>	<b>\$719,443.43</b>	<b>\$738,683.79</b>	<b>\$804,462.91</b>	<b>\$823,279.44</b>	<b>\$835,280.40</b>	<b>\$821,394.01</b>	<b>\$ 889,847.38</b>	<b>\$ 68,453.37</b>	<b>8.33%</b>	<b>TOTAL</b>

**LAW ENFORCEMENT TEN YEAR FISCAL**



**LAW ENFORCEMENT SALES TAXES RECEIVED**

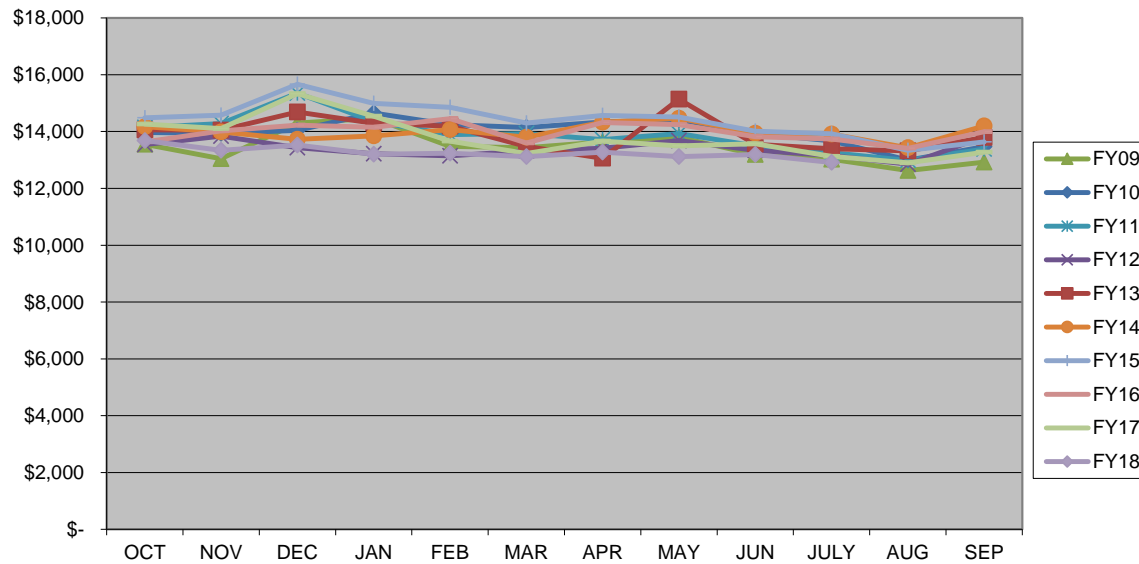


# CITY OF WARRENSBURG CABLE FRANCHISE TEN YEAR COMPARISON

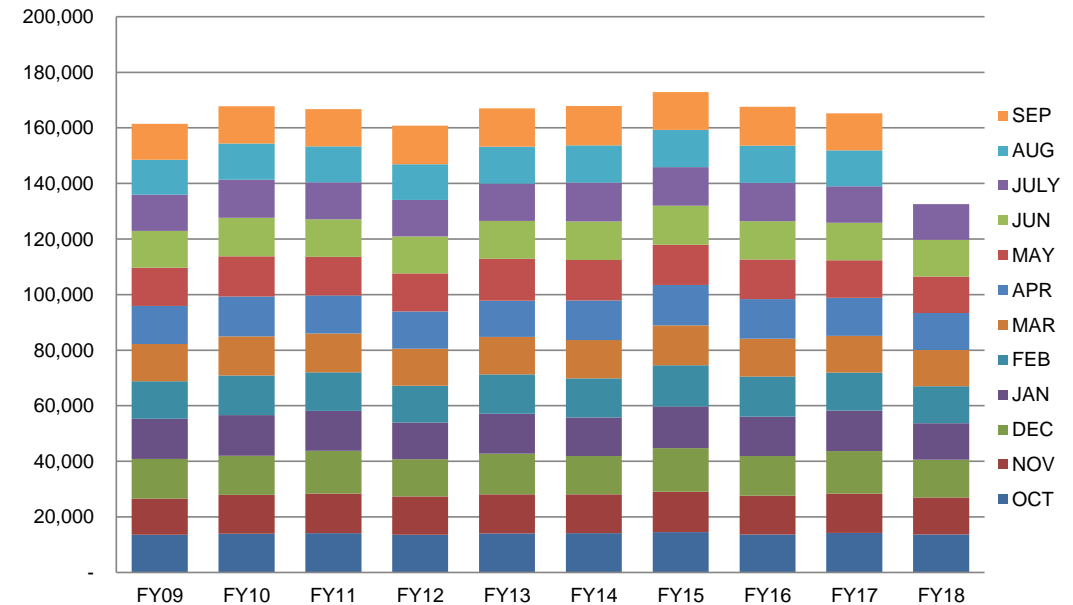


	FY09	FY10	FY11	FY12	FY13	FY14	FY15	FY16	FY17	FY18	CHANGE	%	
OCT	\$ 13,549.06	\$ 13,967.05	\$ 14,144.68	\$ 13,540.07	\$ 14,056.30	\$ 14,173.34	\$ 14,486.50	\$ 13,633.86	\$ 14,267.71	\$ 13,684.52	\$ (583.19)	-4.09%	OCT
NOV	\$ 13,041.54	\$ 13,942.22	\$ 14,282.89	\$ 13,838.13	\$ 14,052.56	\$ 13,990.66	\$ 14,581.21	\$ 14,019.43	\$ 14,109.73	\$ 13,335.78	\$ (773.95)	-5.49%	NOV
DEC	\$ 14,299.32	\$ 14,044.68	\$ 15,352.81	\$ 13,435.75	\$ 14,689.49	\$ 13,730.16	\$ 15,664.28	\$ 14,230.54	\$ 15,331.57	\$ 13,523.64	\$ (1,807.93)	-11.79%	DEC
JAN	\$ 14,466.92	\$ 14,651.63	\$ 14,351.53	\$ 13,222.48	\$ 14,292.53	\$ 13,844.87	\$ 14,995.49	\$ 14,148.65	\$ 14,536.57	\$ 13,199.31	\$ (1,337.26)	-9.20%	JAN
FEB	\$ 13,474.59	\$ 14,249.08	\$ 13,894.54	\$ 13,146.19	\$ 14,188.53	\$ 14,068.50	\$ 14,852.26	\$ 14,453.64	\$ 13,667.28	\$ 13,241.56	\$ (425.72)	-3.11%	FEB
MAR	\$ 13,432.43	\$ 14,139.29	\$ 13,932.17	\$ 13,320.97	\$ 13,475.92	\$ 13,798.92	\$ 14,303.71	\$ 13,595.10	\$ 13,231.47	\$ 13,114.16	\$ (117.31)	-0.89%	MAR
APR	\$ 13,636.50	\$ 14,337.97	\$ 13,719.84	\$ 13,415.13	\$ 13,058.68	\$ 14,329.30	\$ 14,564.77	\$ 14,315.92	\$ 13,663.32	\$ 13,275.06	\$ (388.26)	-2.84%	APR
MAY	\$ 13,803.40	\$ 14,421.24	\$ 13,931.43	\$ 13,679.06	\$ 15,139.58	\$ 14,469.77	\$ 14,514.60	\$ 14,246.95	\$ 13,493.93	\$ 13,120.98	\$ (372.95)	-2.76%	MAY
JUN	\$ 13,192.52	\$ 13,926.30	\$ 13,493.02	\$ 13,337.92	\$ 13,552.95	\$ 13,940.88	\$ 14,012.43	\$ 13,816.55	\$ 13,568.66	\$ 13,188.06	\$ (380.60)	-2.80%	JUN
JULY	\$ 13,022.90	\$ 13,675.04	\$ 13,256.76	\$ 13,152.18	\$ 13,392.59	\$ 13,915.15	\$ 13,920.07	\$ 13,739.20	\$ 13,129.97	\$ 12,911.66	\$ (218.31)	-1.66%	JULY
AUG	\$ 12,628.50	\$ 12,993.89	\$ 12,984.11	\$ 12,851.60	\$ 13,325.18	\$ 13,427.82	\$ 13,339.91	\$ 13,409.59	\$ 12,899.95				AUG
SEP	\$ 12,921.91	\$ 13,470.85	\$ 13,390.19	\$ 13,816.69	\$ 13,796.27	\$ 14,199.44	\$ 13,638.30	\$ 13,998.85	\$ 13,279.56				SEP
<b>TOTAL</b>	<b>\$161,469.59</b>	<b>\$167,819.24</b>	<b>\$166,733.97</b>	<b>\$160,756.17</b>	<b>\$167,020.58</b>	<b>\$167,888.81</b>	<b>\$172,873.53</b>	<b>\$167,608.28</b>	<b>\$165,179.72</b>	<b>\$132,594.73</b>	<b>\$ (6,405.48)</b>	<b>-4.61%</b>	<b>TOTAL</b>

**CABLE FRANCHISE TEN YEAR FISCAL**



**CABLE FRANCHISE REVENUE RECEIVED**



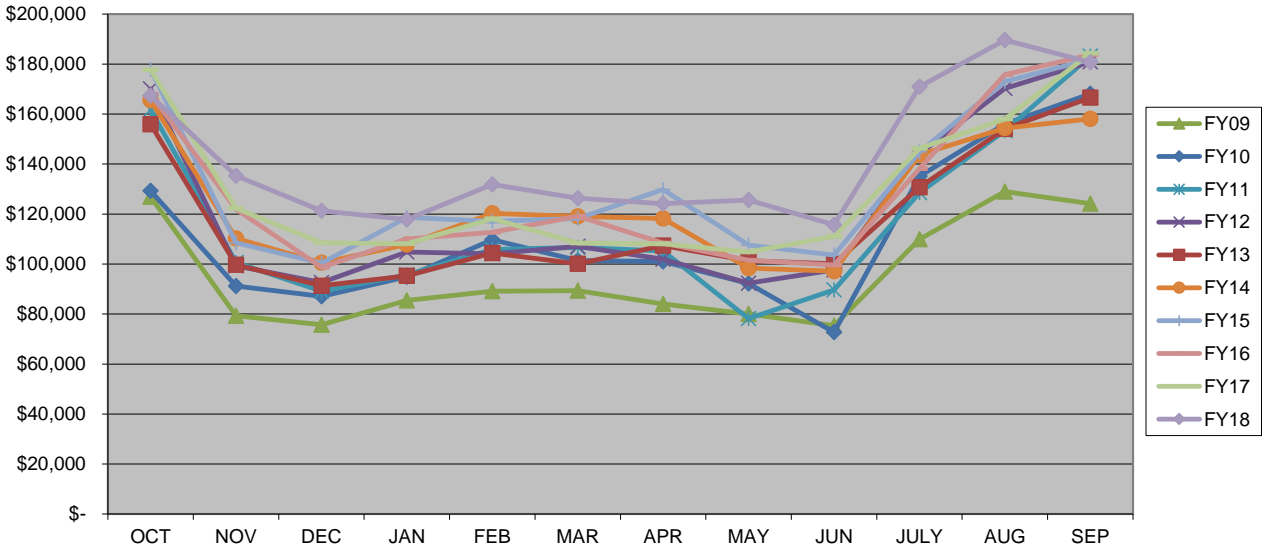


# CITY OF WARRENSBURG ELECTRIC FRANCHISE TEN YEAR COMPARISON

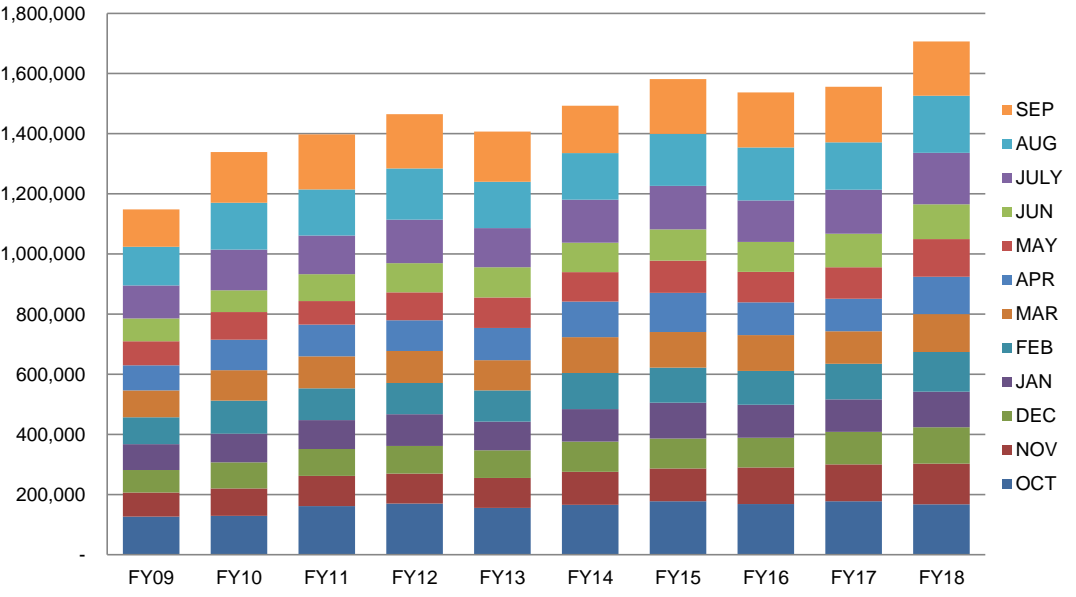


	FY09	FY10	FY11	FY12	FY13	FY14	FY15	FY16	FY17	FY18	CHANGE	%	
OCT	\$ 126,937.11	\$ 129,239.74	\$ 161,740.31	\$ 170,081.28	\$ 155,920.66	\$ 165,530.30	\$ 177,814.95	\$ 167,944.36	\$ 177,695.86	\$ 167,434.02	\$ (10,261.84)	-5.77%	OCT
NOV	\$ 79,313.36	\$ 91,157.94	\$ 100,626.60	\$ 99,295.90	\$ 99,683.72	\$ 110,229.30	\$ 108,490.24	\$ 121,910.47	\$ 122,289.37	\$ 135,308.25	\$ 13,018.88	10.65%	NOV
DEC	\$ 75,732.67	\$ 87,053.12	\$ 89,162.70	\$ 92,577.75	\$ 91,342.44	\$ 100,515.98	\$ 100,342.52	\$ 98,701.70	\$ 108,536.32	\$ 121,274.30	\$ 12,737.98	11.74%	DEC
JAN	\$ 85,495.30	\$ 94,904.81	\$ 95,662.77	\$ 104,808.30	\$ 95,282.07	\$ 107,824.31	\$ 118,681.13	\$ 110,027.73	\$ 108,134.91	\$ 117,857.77	\$ 9,722.86	8.99%	JAN
FEB	\$ 89,113.85	\$ 109,730.03	\$ 105,847.25	\$ 104,044.27	\$ 104,389.34	\$ 120,242.36	\$ 117,142.39	\$ 112,710.54	\$ 118,086.17	\$ 131,881.98	\$ 13,795.81	11.68%	FEB
MAR	\$ 89,355.76	\$ 101,474.18	\$ 106,623.88	\$ 107,064.18	\$ 100,116.16	\$ 119,096.35	\$ 118,236.01	\$ 119,102.62	\$ 108,417.90	\$ 126,339.61	\$ 17,921.71	16.53%	MAR
APR	\$ 84,025.53	\$ 101,052.67	\$ 105,268.32	\$ 101,947.76	\$ 107,355.84	\$ 118,230.59	\$ 129,804.68	\$ 108,421.11	\$ 108,061.44	\$ 124,144.27	\$ 16,082.83	14.88%	APR
MAY	\$ 80,025.55	\$ 92,246.49	\$ 78,172.51	\$ 92,355.14	\$ 101,366.60	\$ 98,409.40	\$ 107,624.87	\$ 101,496.71	\$ 104,844.47	\$ 125,587.53	\$ 20,743.06	19.78%	MAY
JUN	\$ 75,349.64	\$ 72,713.12	\$ 89,668.48	\$ 97,682.86	\$ 100,138.05	\$ 97,158.65	\$ 103,621.67	\$ 99,601.74	\$ 111,028.65	\$ 115,705.06	\$ 4,676.41	4.21%	JUN
JULY	\$ 109,895.68	\$ 135,116.30	\$ 128,528.35	\$ 144,088.76	\$ 130,709.94	\$ 143,697.21	\$ 144,887.03	\$ 138,213.44	\$ 146,313.23	\$ 170,970.87	\$ 24,657.64	16.85%	JULY
AUG	\$ 128,995.93	\$ 155,984.25	\$ 153,360.67	\$ 170,292.81	\$ 154,066.41	\$ 154,398.43	\$ 173,036.16	\$ 175,808.06	\$ 157,998.17	\$ 189,625.86	\$ 31,627.69	20.02%	AUG
SEP	\$ 124,132.35	\$ 168,079.92	\$ 183,145.58	\$ 180,876.57	\$ 166,603.13	\$ 158,040.87	\$ 181,905.70	\$ 183,748.06	\$ 184,331.49	\$ 180,732.58	\$ (3,598.91)	-1.95%	SEP
<b>TOTAL</b>	<b>\$1,148,372.73</b>	<b>\$1,338,752.57</b>	<b>\$1,397,807.42</b>	<b>\$1,465,115.58</b>	<b>\$1,406,974.36</b>	<b>\$1,493,373.75</b>	<b>\$1,581,587.35</b>	<b>\$1,537,686.54</b>	<b>\$1,555,737.98</b>	<b>\$1,706,862.10</b>	<b>\$151,124.12</b>	<b>9.71%</b>	<b>TOTAL</b>

**ELECTRIC FRANCHISE TEN YEAR FISCAL**



**ELECTRIC FRANCHISE REVENUE RECEIVED**

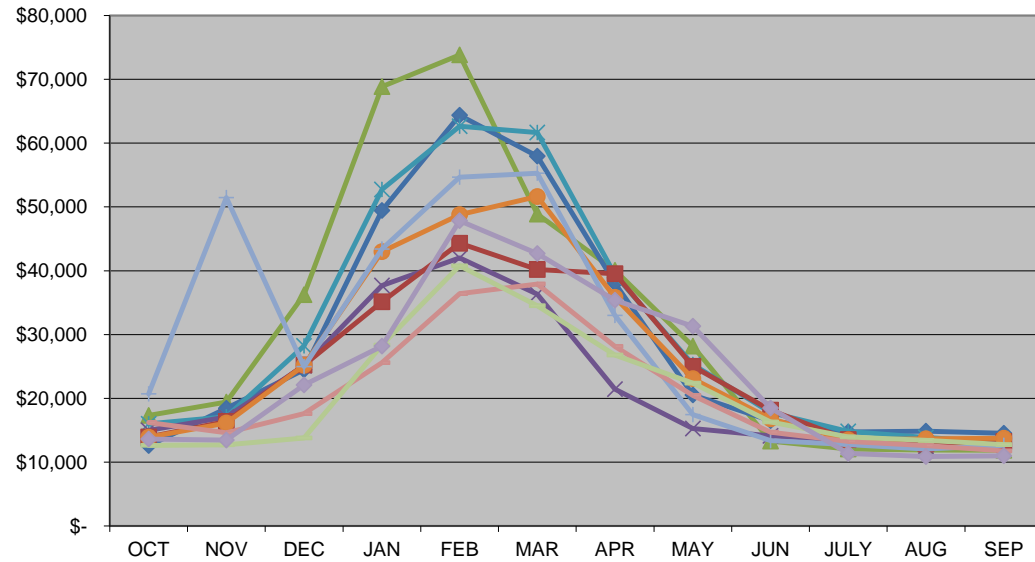


# CITY OF WARRENSBURG GAS FRANCHISE TEN YEAR COMPARISON

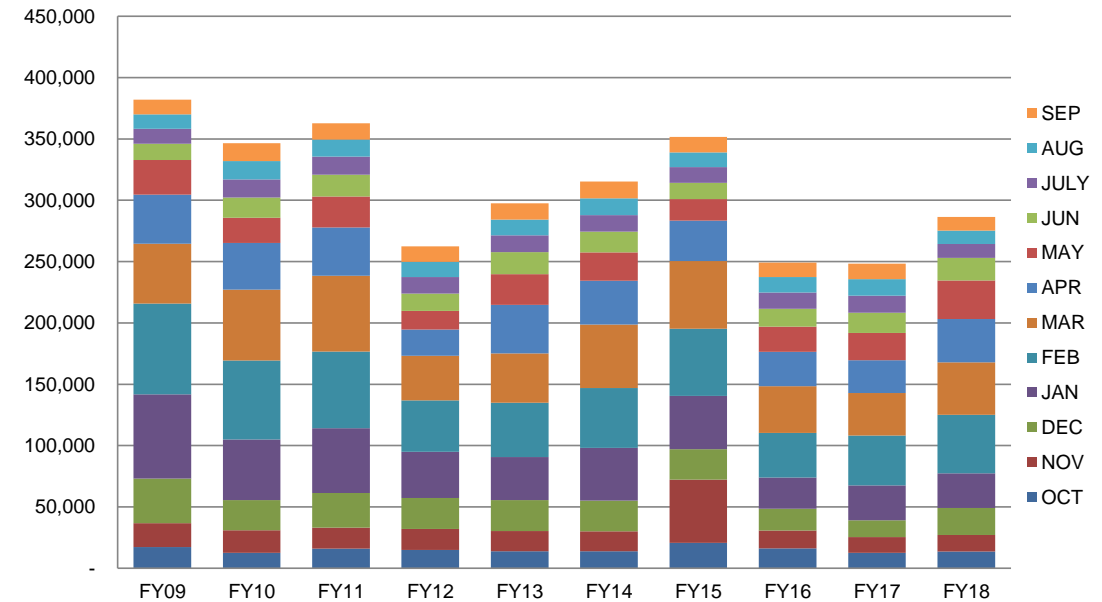


	FY09	FY10	FY11	FY12	FY13	FY14	FY15	FY16	FY17	FY18	CHANGE	%	
OCT	\$ 17,332.47	\$ 12,577.82	\$ 16,010.95	\$ 14,972.98	\$ 13,933.54	\$ 13,902.47	\$ 20,695.75	\$ 16,206.16	\$ 12,618.59	\$ 13,625.00	\$ 1,006.41	7.98%	OCT
NOV	\$ 19,429.28	\$ 18,421.91	\$ 17,112.67	\$ 17,088.39	\$ 16,379.63	\$ 16,128.21	\$ 51,463.12	\$ 14,594.83	\$ 12,735.62	\$ 13,446.89	\$ 711.27	5.58%	NOV
DEC	\$ 36,249.21	\$ 24,463.11	\$ 28,225.68	\$ 25,115.03	\$ 25,200.08	\$ 25,181.13	\$ 24,961.45	\$ 17,610.67	\$ 13,802.46	\$ 22,081.55	\$ 8,279.09	59.98%	DEC
JAN	\$ 68,858.46	\$ 49,441.63	\$ 52,740.33	\$ 37,674.68	\$ 35,119.37	\$ 43,002.93	\$ 43,382.98	\$ 25,607.33	\$ 28,335.87	\$ 28,197.18	\$ (138.69)	-0.49%	JAN
FEB	\$ 73,823.62	\$ 64,359.62	\$ 62,646.44	\$ 42,018.45	\$ 44,319.79	\$ 48,772.30	\$ 54,684.74	\$ 36,396.73	\$ 40,779.03	\$ 47,832.59	\$ 7,053.56	17.30%	FEB
MAR	\$ 48,866.35	\$ 57,938.35	\$ 61,659.13	\$ 36,310.67	\$ 40,185.64	\$ 51,633.93	\$ 55,282.93	\$ 37,912.69	\$ 34,511.92	\$ 42,688.58	\$ 8,176.66	23.69%	MAR
APR	\$ 40,057.06	\$ 38,043.25	\$ 39,357.86	\$ 21,444.19	\$ 39,514.07	\$ 35,820.88	\$ 32,984.98	\$ 28,153.25	\$ 26,768.30	\$ 35,388.54	\$ 8,620.24	32.20%	APR
MAY	\$ 28,178.62	\$ 20,534.31	\$ 25,312.57	\$ 15,251.83	\$ 25,030.15	\$ 23,069.55	\$ 17,439.30	\$ 20,447.50	\$ 22,362.25	\$ 31,298.58	\$ 8,936.33	39.96%	MAY
JUN	\$ 13,276.86	\$ 16,495.13	\$ 17,781.68	\$ 14,094.19	\$ 18,125.63	\$ 16,801.70	\$ 13,359.06	\$ 14,670.85	\$ 16,300.80	\$ 18,487.52	\$ 2,186.72	13.41%	JUN
JULY	\$ 12,078.91	\$ 14,720.85	\$ 14,830.08	\$ 13,412.60	\$ 13,555.40	\$ 13,489.60	\$ 12,746.29	\$ 13,233.97	\$ 13,966.20	\$ 11,375.94	\$ (2,590.26)	-18.55%	JULY
AUG	\$ 11,905.36	\$ 14,857.90	\$ 13,886.38	\$ 12,450.06	\$ 12,837.10	\$ 13,662.83	\$ 12,050.15	\$ 12,589.35	\$ 13,396.36	\$ 10,884.19	\$ (2,512.17)	-18.75%	AUG
SEP	\$ 11,864.10	\$ 14,532.62	\$ 13,081.16	\$ 12,645.29	\$ 13,264.21	\$ 13,750.51	\$ 12,620.75	\$ 11,766.74	\$ 12,751.77	\$ 10,976.43	\$ (1,775.34)	-13.92%	SEP
<b>TOTAL</b>	<b>\$381,920.30</b>	<b>\$346,386.50</b>	<b>\$362,644.93</b>	<b>\$262,478.36</b>	<b>\$297,464.61</b>	<b>\$315,216.04</b>	<b>\$351,671.50</b>	<b>\$249,190.07</b>	<b>\$248,329.17</b>	<b>\$286,282.99</b>	<b>\$ 37,953.82</b>	<b>16.11%</b>	<b>TOTAL</b>

**GAS FRANCHISE TEN YEAR FISCAL**



**GAS FRANCHISE REVENUE RECEIVED**

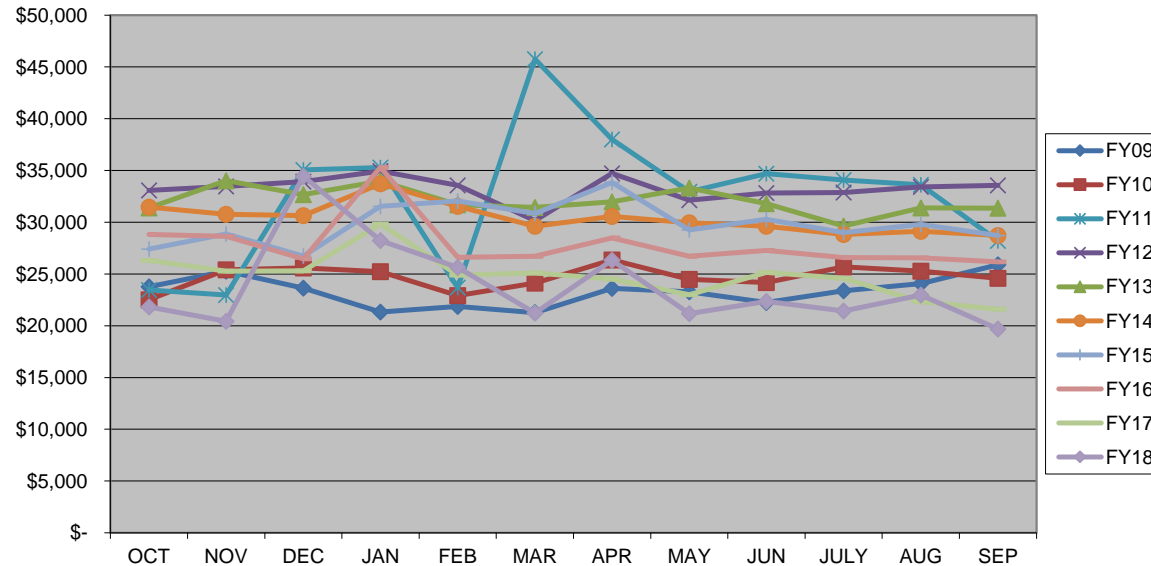


# CITY OF WARRENSBURG TELEPHONE FRANCHISE TEN YEAR COMPARISON

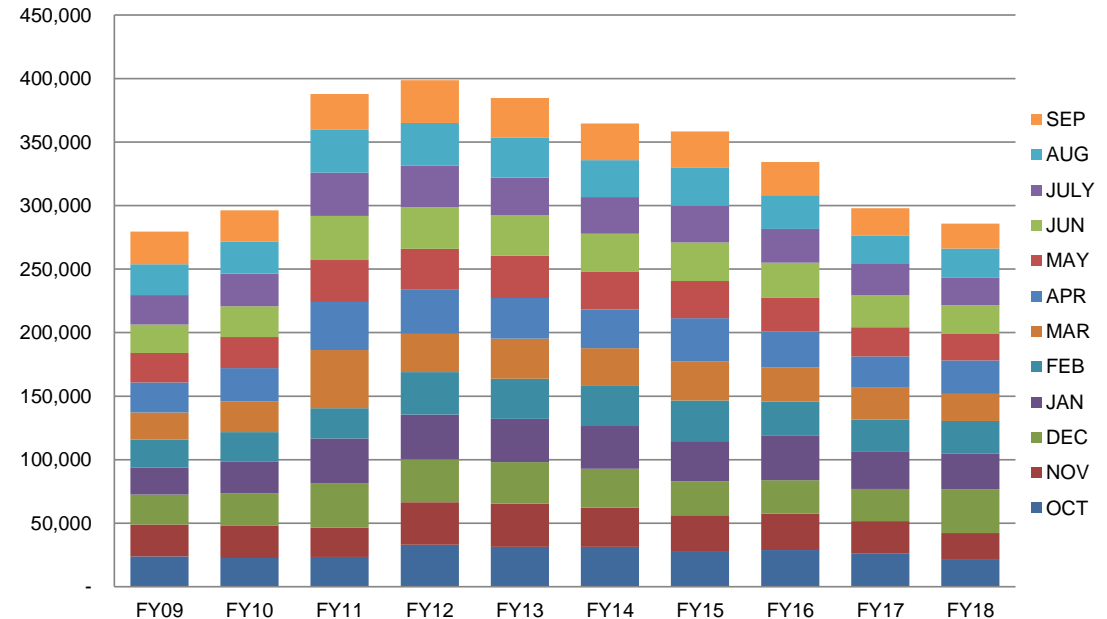


		8%	37%	-3%	-4%	-6%	-13%	-1%	-4%				
	FY09	FY10	FY11	FY12	FY13	FY14	FY15	FY16	FY17	FY18	CHANGE	%	
OCT	\$ 23,754.81	\$ 22,516.14	\$ 23,447.59	\$ 33,078.90	\$ 31,395.24	\$ 31,468.82	\$ 27,420.31	\$ 28,810.91	\$ 26,294.53	\$ 21,807.61	\$ (4,486.92)	-17.06%	OCT
NOV	\$ 25,269.60	\$ 25,410.28	\$ 22,969.83	\$ 33,466.90	\$ 34,014.11	\$ 30,759.91	\$ 28,879.05	\$ 28,630.93	\$ 25,274.82	\$ 20,434.49	\$ (4,840.33)	-19.15%	NOV
DEC	\$ 23,626.35	\$ 25,593.17	\$ 35,042.46	\$ 33,913.39	\$ 32,675.94	\$ 30,637.30	\$ 26,728.28	\$ 26,446.64	\$ 25,308.28	\$ 34,447.24	\$ 9,138.96	36.11%	DEC
JAN	\$ 21,322.71	\$ 25,216.02	\$ 35,273.02	\$ 34,938.80	\$ 33,971.37	\$ 33,716.83	\$ 31,545.60	\$ 35,302.58	\$ 29,829.18	\$ 28,226.49	\$ (1,602.69)	-5.37%	JAN
FEB	\$ 21,862.45	\$ 22,911.09	\$ 23,699.30	\$ 33,558.32	\$ 31,690.56	\$ 31,526.48	\$ 32,059.03	\$ 26,600.36	\$ 24,880.87	\$ 25,633.31	\$ 752.44	3.02%	FEB
MAR	\$ 21,263.54	\$ 24,118.75	\$ 45,759.11	\$ 30,157.94	\$ 31,433.34	\$ 29,623.22	\$ 30,855.52	\$ 26,718.68	\$ 25,108.28	\$ 21,223.43	\$ (3,884.85)	-15.47%	MAR
APR	\$ 23,616.94	\$ 26,364.28	\$ 38,006.15	\$ 34,727.40	\$ 31,983.36	\$ 30,552.27	\$ 33,840.11	\$ 28,476.97	\$ 24,507.31	\$ 26,325.62	\$ 1,818.31	7.42%	APR
MAY	\$ 23,287.45	\$ 24,489.15	\$ 32,956.97	\$ 32,138.45	\$ 33,300.57	\$ 29,947.27	\$ 29,254.05	\$ 26,720.89	\$ 23,006.46	\$ 21,166.94	\$ (1,839.52)	-8.00%	MAY
JUN	\$ 22,258.05	\$ 24,178.19	\$ 34,700.11	\$ 32,822.09	\$ 31,802.91	\$ 29,602.41	\$ 30,285.33	\$ 27,274.24	\$ 25,144.48	\$ 22,365.52	\$ (2,778.96)	-11.05%	JUN
JULY	\$ 23,382.53	\$ 25,683.01	\$ 34,089.10	\$ 32,875.99	\$ 29,637.79	\$ 28,827.98	\$ 28,997.42	\$ 26,588.84	\$ 24,578.06	\$ 21,436.21	\$ (3,141.85)	-12.78%	JULY
AUG	\$ 24,067.34	\$ 25,270.95	\$ 33,612.37	\$ 33,418.94	\$ 31,385.38	\$ 29,128.18	\$ 29,800.00	\$ 26,558.24	\$ 22,318.17	\$ 22,980.06	\$ 661.89	2.97%	AUG
SEP	\$ 25,891.42	\$ 24,581.94	\$ 28,203.46	\$ 33,556.04	\$ 31,367.89	\$ 28,728.22	\$ 28,725.33	\$ 26,172.99	\$ 21,604.17	\$ 19,689.16	\$ (1,915.01)	-8.86%	SEP
<b>TOTAL</b>	<b>\$279,603.19</b>	<b>\$296,332.97</b>	<b>\$387,759.47</b>	<b>\$398,653.16</b>	<b>\$384,658.46</b>	<b>\$364,518.89</b>	<b>\$358,390.03</b>	<b>\$334,302.27</b>	<b>\$297,854.61</b>	<b>\$285,736.08</b>	<b>\$(12,118.53)</b>	<b>-4.07%</b>	<b>TOTAL</b>

**TELEPHONE FRANCHISE TEN YEAR FISCAL**



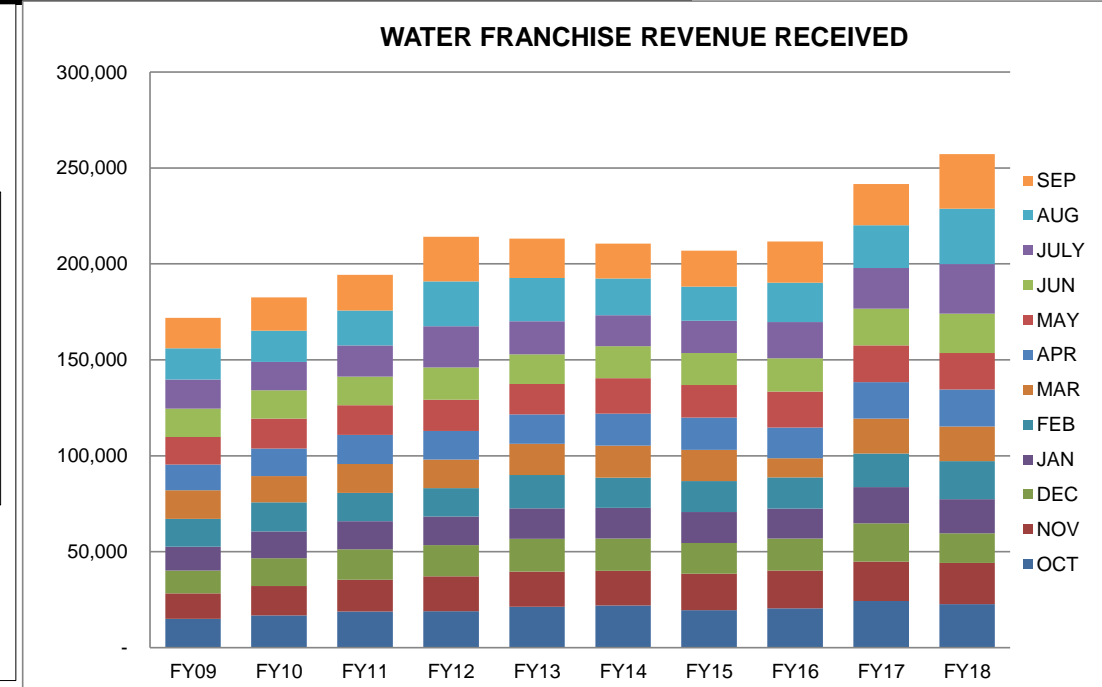
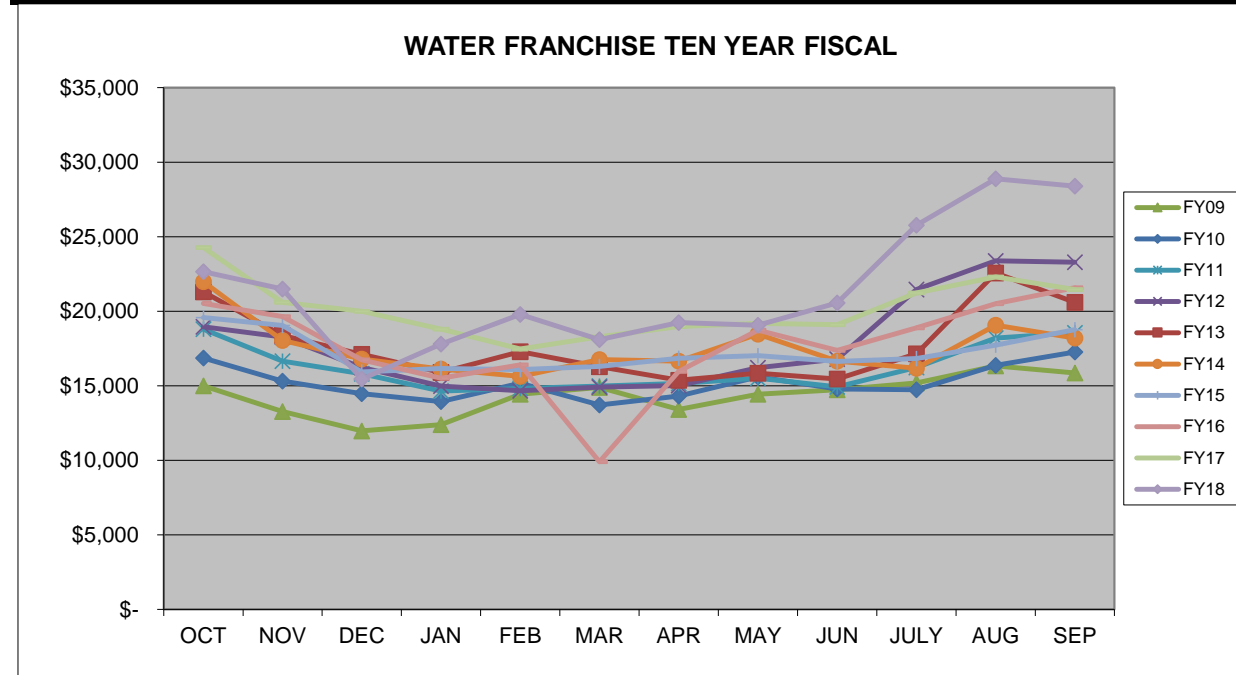
**TELEPHONE FRANCHISE REVENUE RECEIVED**



# CITY OF WARRENSBURG WATER FRANCHISE TEN YEAR COMPARISON



	FY09	FY10	FY11	FY12	FY13	FY14	FY15	FY16	FY17	FY18	CHANGE	%	
OCT	\$ 14,996.00	\$ 16,862.70	\$ 18,795.34	\$ 18,959.05	\$ 21,302.11	\$ 21,978.07	\$ 19,577.84	\$ 20,515.52	\$ 24,268.19	\$ 22,651.14	\$ (1,617.05)	-6.66%	OCT
NOV	\$ 13,273.17	\$ 15,320.65	\$ 16,645.80	\$ 18,269.93	\$ 18,369.21	\$ 18,034.30	\$ 19,040.06	\$ 19,641.98	\$ 20,602.11	\$ 21,483.99	\$ 881.88	4.28%	NOV
DEC	\$ 11,976.36	\$ 14,468.01	\$ 15,813.74	\$ 16,222.24	\$ 17,104.86	\$ 16,795.72	\$ 15,928.34	\$ 16,736.34	\$ 19,998.95	\$ 15,449.82	\$ (4,549.13)	-22.75%	DEC
JAN	\$ 12,393.14	\$ 13,934.87	\$ 14,644.94	\$ 14,974.32	\$ 15,891.96	\$ 16,126.97	\$ 16,151.91	\$ 15,505.49	\$ 18,790.26	\$ 17,797.76	\$ (992.50)	-5.28%	JAN
FEB	\$ 14,441.06	\$ 15,167.29	\$ 14,826.28	\$ 14,665.15	\$ 17,283.89	\$ 15,629.74	\$ 16,082.10	\$ 16,396.83	\$ 17,467.06	\$ 19,791.56	\$ 2,324.50	13.31%	FEB
MAR	\$ 14,894.28	\$ 13,712.26	\$ 14,970.80	\$ 14,901.69	\$ 16,278.68	\$ 16,765.60	\$ 16,300.05	\$ 9,901.17	\$ 18,292.41	\$ 18,086.47	\$ (205.94)	-1.13%	MAR
APR	\$ 13,406.11	\$ 14,302.84	\$ 15,147.77	\$ 15,019.24	\$ 15,375.13	\$ 16,656.59	\$ 16,846.01	\$ 15,960.62	\$ 18,978.09	\$ 19,245.34	\$ 267.25	1.41%	APR
MAY	\$ 14,435.38	\$ 15,592.61	\$ 15,509.90	\$ 16,208.46	\$ 15,835.23	\$ 18,456.83	\$ 17,017.93	\$ 18,736.44	\$ 19,180.78	\$ 19,068.28	\$ (112.50)	-0.59%	MAY
JUN	\$ 14,725.05	\$ 14,782.02	\$ 14,934.77	\$ 16,795.23	\$ 15,462.63	\$ 16,655.65	\$ 16,631.16	\$ 17,364.79	\$ 19,092.34	\$ 20,560.98	\$ 1,468.64	7.69%	JUN
JULY	\$ 15,187.26	\$ 14,739.12	\$ 16,223.13	\$ 21,463.73	\$ 17,138.33	\$ 16,178.92	\$ 16,835.74	\$ 18,881.10	\$ 21,233.32	\$ 25,762.39	\$ 4,529.07	21.33%	JULY
AUG	\$ 16,333.15	\$ 16,362.95	\$ 18,194.97	\$ 23,382.81	\$ 22,567.13	\$ 19,070.60	\$ 17,719.54	\$ 20,508.15	\$ 22,299.45	\$ 28,883.07	\$ 6,583.62	29.52%	AUG
SEP	\$ 15,857.18	\$ 17,261.87	\$ 18,560.10	\$ 23,290.15	\$ 20,585.92	\$ 18,198.80	\$ 18,768.34	\$ 21,577.92	\$ 21,459.56	\$ 28,394.09	\$ 6,934.53	32.31%	SEP
<b>TOTALS</b>	<b>\$171,918.14</b>	<b>\$182,507.19</b>	<b>\$194,267.54</b>	<b>\$214,152.00</b>	<b>\$213,195.08</b>	<b>\$210,547.79</b>	<b>\$206,899.02</b>	<b>\$211,726.35</b>	<b>\$241,662.52</b>	<b>\$257,174.89</b>	<b>\$15,512.37</b>	<b>6.42%</b>	<b>TOTAL</b>

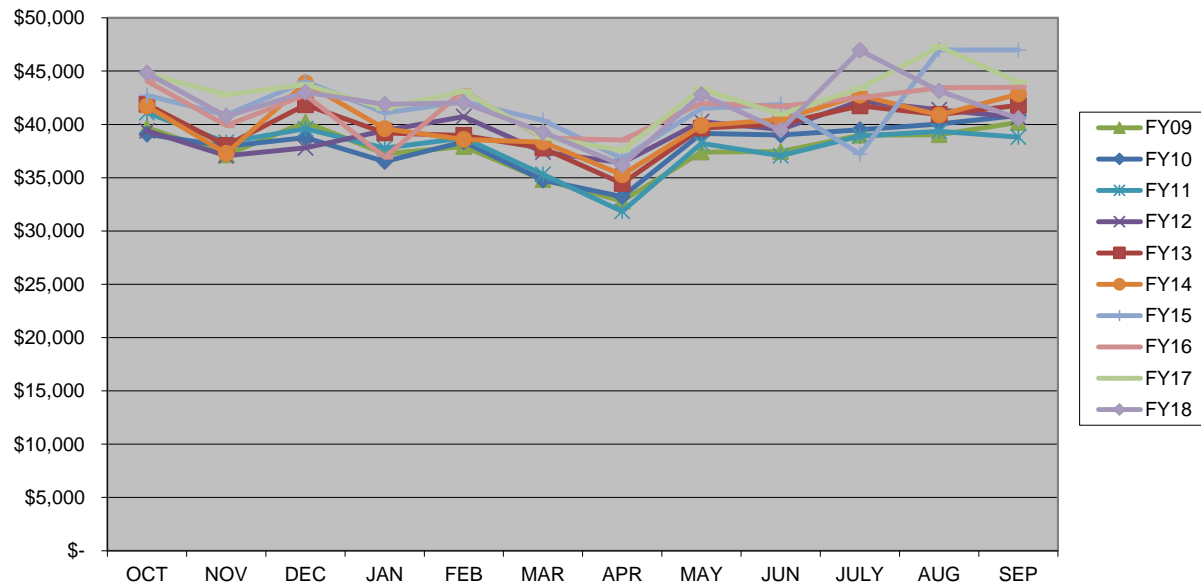


# CITY OF WARRENSBURG FUEL TAX TEN YEAR COMPARISON

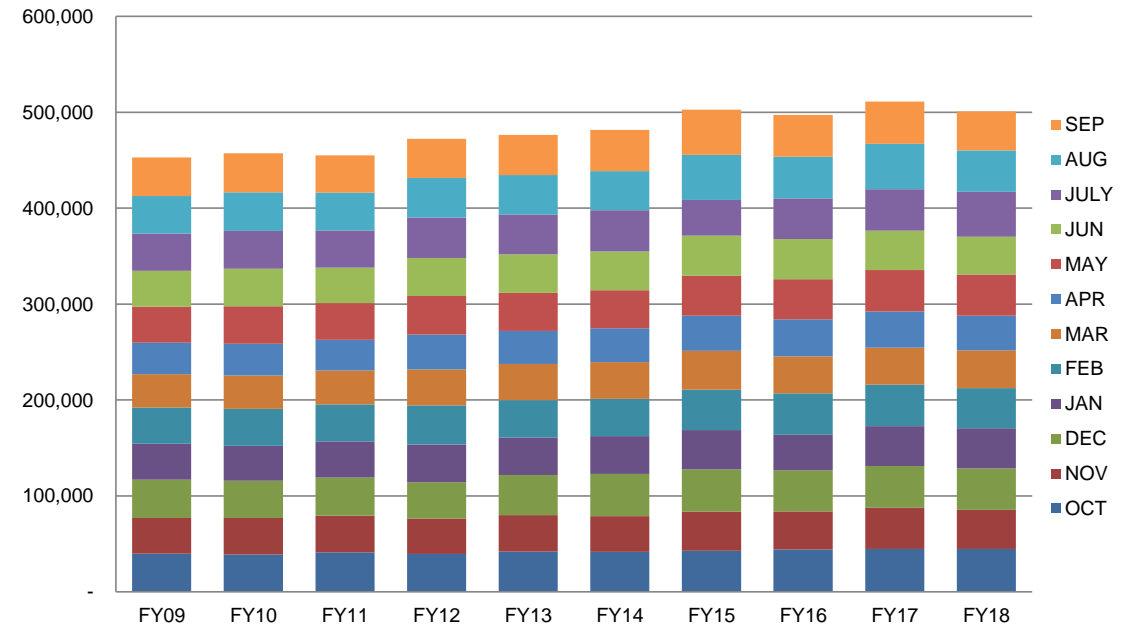


	FY09	FY10	FY11	FY12	FY13	FY14	FY15	FY16	FY17	FY18	CHANGE	%	
OCT	\$ 39,698.42	\$ 39,079.46	\$ 41,103.18	\$ 39,386.21	\$ 41,877.52	\$ 41,715.79	\$ 42,723.29	\$ 44,065.90	\$ 44,742.37	\$ 44,811.63	\$ 69.26	0.15%	OCT
NOV	\$ 37,139.85	\$ 37,956.13	\$ 38,326.00	\$ 37,069.62	\$ 38,013.58	\$ 37,279.22	\$ 40,879.99	\$ 39,883.27	\$ 42,796.74	\$ 40,758.82	\$ (2,037.92)	-4.76%	NOV
DEC	\$ 40,209.33	\$ 38,764.84	\$ 39,593.24	\$ 37,800.28	\$ 41,835.25	\$ 43,874.69	\$ 44,019.43	\$ 42,777.38	\$ 43,722.23	\$ 43,017.04	\$ (705.19)	-1.61%	DEC
JAN	\$ 37,226.32	\$ 36,517.71	\$ 37,776.30	\$ 39,426.07	\$ 39,191.20	\$ 39,582.06	\$ 41,075.51	\$ 36,921.22	\$ 41,485.06	\$ 41,877.67	\$ 392.61	0.95%	JAN
FEB	\$ 37,922.09	\$ 38,353.50	\$ 38,738.59	\$ 40,721.19	\$ 38,955.01	\$ 38,594.64	\$ 42,119.73	\$ 43,165.97	\$ 43,106.39	\$ 42,022.56	\$ (1,083.83)	-2.51%	FEB
MAR	\$ 34,811.92	\$ 34,760.53	\$ 35,306.68	\$ 37,408.71	\$ 37,774.76	\$ 38,348.38	\$ 40,380.34	\$ 38,709.65	\$ 38,803.32	\$ 39,263.56	\$ 460.24	1.19%	MAR
APR	\$ 32,812.40	\$ 33,220.09	\$ 31,834.28	\$ 36,397.65	\$ 34,457.40	\$ 35,271.63	\$ 36,813.63	\$ 38,535.51	\$ 37,566.23	\$ 36,177.48	\$ (1,388.75)	-3.70%	APR
MAY	\$ 37,393.65	\$ 39,162.93	\$ 38,219.77	\$ 40,253.13	\$ 39,646.24	\$ 39,891.56	\$ 41,490.95	\$ 41,991.65	\$ 43,315.45	\$ 42,789.67	\$ (525.78)	-1.21%	MAY
JUN	\$ 37,464.52	\$ 38,997.77	\$ 37,069.17	\$ 39,514.31	\$ 40,072.81	\$ 40,467.27	\$ 41,875.83	\$ 41,681.60	\$ 40,954.48	\$ 39,479.42	\$ (1,475.06)	-3.60%	JUN
JULY	\$ 38,966.98	\$ 39,505.96	\$ 38,907.66	\$ 42,189.92	\$ 41,725.22	\$ 42,721.53	\$ 37,197.06	\$ 42,493.33	\$ 43,368.62	\$ 46,951.12	\$ 3,582.50	8.26%	JULY
AUG	\$ 39,034.58	\$ 40,044.46	\$ 39,338.04	\$ 41,361.62	\$ 40,925.24	\$ 40,870.07	\$ 46,967.52	\$ 43,437.71	\$ 47,290.82	\$ 43,139.74	\$ (4,151.08)	-8.78%	AUG
SEP	\$ 40,173.19	\$ 40,834.05	\$ 38,801.46	\$ 40,642.42	\$ 41,784.11	\$ 42,850.91	\$ 46,983.16	\$ 43,473.69	\$ 43,966.54	\$ 40,561.89	\$ (3,404.65)	-7.74%	SEP
<b>TOTAL</b>	<b>\$452,853.25</b>	<b>\$457,197.43</b>	<b>\$455,014.37</b>	<b>\$472,171.13</b>	<b>\$476,258.34</b>	<b>\$481,467.75</b>	<b>\$502,526.44</b>	<b>\$497,136.88</b>	<b>\$511,118.25</b>	<b>\$500,850.60</b>	<b>\$ (10,267.65)</b>	<b>-2.01%</b>	<b>TOTAL</b>

**FUEL TAX TEN YEAR FISCAL**



**FUEL TAX TAXES RECEIVED**

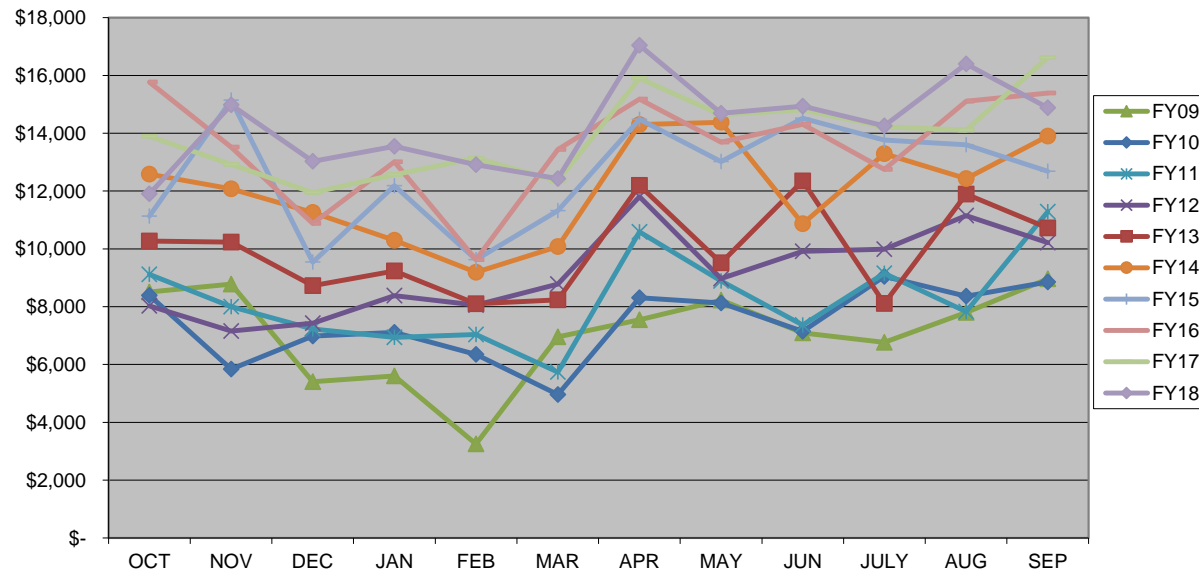


# CITY OF WARRENSBURG VEHICLE SALES TAX TEN YEAR COMPARISON

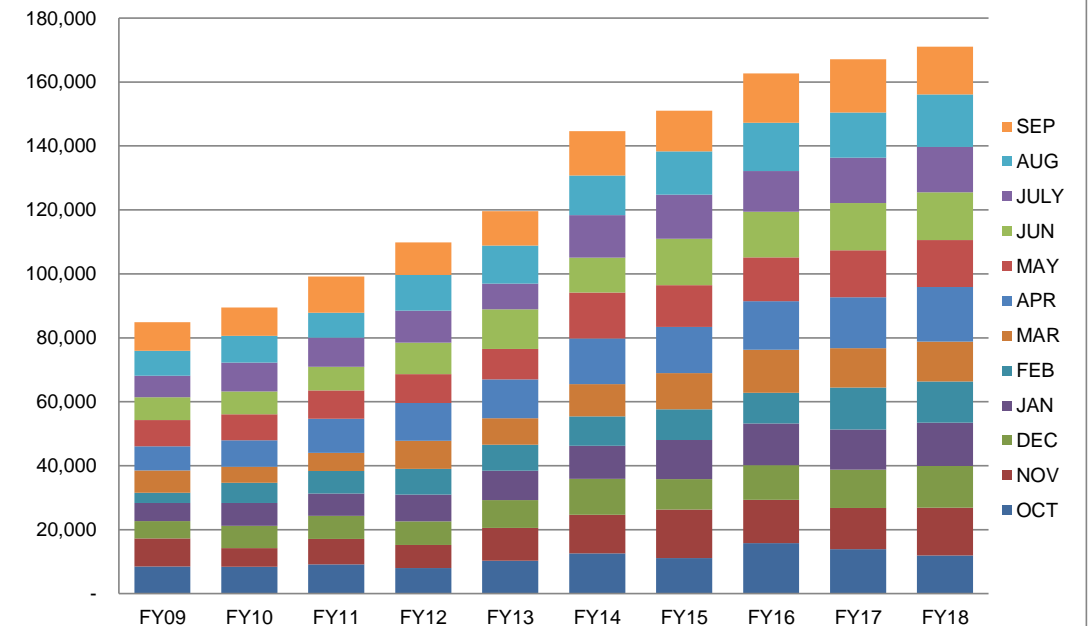


	FY09	FY10	FY11	FY12	FY13	FY14	FY15	FY16	FY17	FY18	CHANGE	%	
OCT	\$ 8,510.57	\$ 8,391.55	\$ 9,116.20	\$ 8,023.49	\$ 10,271.63	\$ 12,587.97	\$ 11,133.14	\$ 15,766.87	\$ 13,887.55	\$ 11,899.67	\$(1,987.88)	-14.31%	OCT
NOV	\$ 8,785.67	\$ 5,836.59	\$ 8,000.44	\$ 7,157.72	\$ 10,232.80	\$ 12,075.97	\$ 15,142.25	\$ 13,522.66	\$ 12,918.80	\$ 14,983.91	\$ 2,065.11	15.99%	NOV
DEC	\$ 5,403.78	\$ 6,983.78	\$ 7,225.11	\$ 7,426.95	\$ 8,730.69	\$ 11,263.48	\$ 9,540.73	\$ 10,881.16	\$ 11,946.31	\$ 13,032.20	\$ 1,085.89	9.09%	DEC
JAN	\$ 5,603.50	\$ 7,110.67	\$ 6,934.42	\$ 8,384.54	\$ 9,237.60	\$ 10,300.01	\$ 12,181.42	\$ 13,011.46	\$ 12,567.00	\$ 13,547.75	\$ 980.75	7.80%	JAN
FEB	\$ 3,250.20	\$ 6,352.78	\$ 7,038.66	\$ 8,051.69	\$ 8,102.67	\$ 9,191.59	\$ 9,627.94	\$ 9,627.54	\$ 13,136.63	\$ 12,913.06	\$ (223.57)	-1.70%	FEB
MAR	\$ 6,960.54	\$ 4,961.47	\$ 5,735.87	\$ 8,778.18	\$ 8,232.95	\$ 10,078.07	\$ 11,319.97	\$ 13,441.92	\$ 12,344.70	\$ 12,431.02	\$ 86.32	0.70%	MAR
APR	\$ 7,547.71	\$ 8,308.32	\$ 10,591.67	\$ 11,804.56	\$ 12,197.38	\$ 14,304.07	\$ 14,485.07	\$ 15,176.34	\$ 15,898.30	\$ 17,044.47	\$ 1,146.17	7.21%	APR
MAY	\$ 8,226.14	\$ 8,128.85	\$ 8,892.20	\$ 8,970.97	\$ 9,513.62	\$ 14,377.65	\$ 13,023.93	\$ 13,689.40	\$ 14,636.44	\$ 14,693.00	\$ 56.56	0.39%	MAY
JUN	\$ 7,093.14	\$ 7,143.64	\$ 7,365.20	\$ 9,911.30	\$ 12,349.75	\$ 10,866.95	\$ 14,520.10	\$ 14,308.27	\$ 14,812.74	\$ 14,937.50	\$ 124.76	0.84%	JUN
JULY	\$ 6,763.65	\$ 9,048.00	\$ 9,149.16	\$ 9,989.54	\$ 8,113.37	\$ 13,287.99	\$ 13,766.26	\$ 12,746.19	\$ 14,214.74	\$ 14,252.51	\$ 37.77	0.27%	JULY
AUG	\$ 7,799.73	\$ 8,367.62	\$ 7,831.47	\$ 11,151.75	\$ 11,890.87	\$ 12,427.95	\$ 13,596.70	\$ 15,105.89	\$ 14,110.58	\$ 16,400.31	\$ 2,289.73	16.23%	AUG
SEP	\$ 8,961.18	\$ 8,850.93	\$ 11,285.14	\$ 10,217.14	\$ 10,723.86	\$ 13,905.09	\$ 12,680.15	\$ 15,385.33	\$ 16,616.46	\$ 14,883.09	\$(1,733.37)	-10.43%	SEP
<b>TOTAL</b>	<b>\$ 84,905.81</b>	<b>\$ 89,484.20</b>	<b>\$ 99,165.54</b>	<b>\$ 109,867.83</b>	<b>\$ 119,597.19</b>	<b>\$ 144,666.79</b>	<b>\$ 151,017.66</b>	<b>\$ 162,663.03</b>	<b>\$ 167,090.25</b>	<b>\$ 171,018.49</b>	<b>\$ 3,928.24</b>	<b>2.35%</b>	<b>TOTAL</b>

**VEHICLE SALES TAX FIVE YEAR FISCAL**



**VEHICLE SALES TAX TAXES RECEIVED**

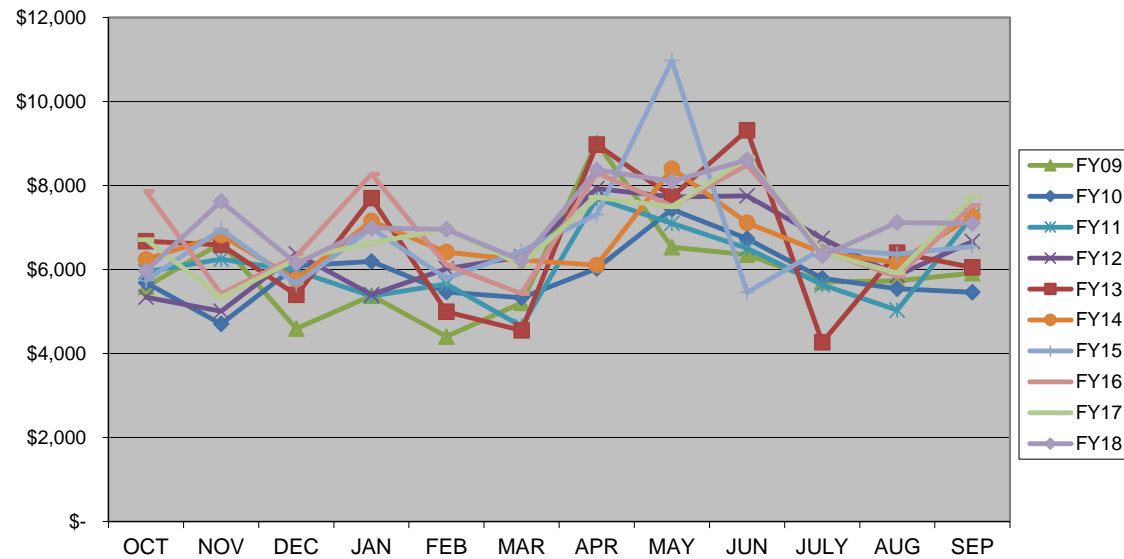


# CITY OF WARRENSBURG VEHICLE FEE INCREASES TEN YEAR COMPARISON

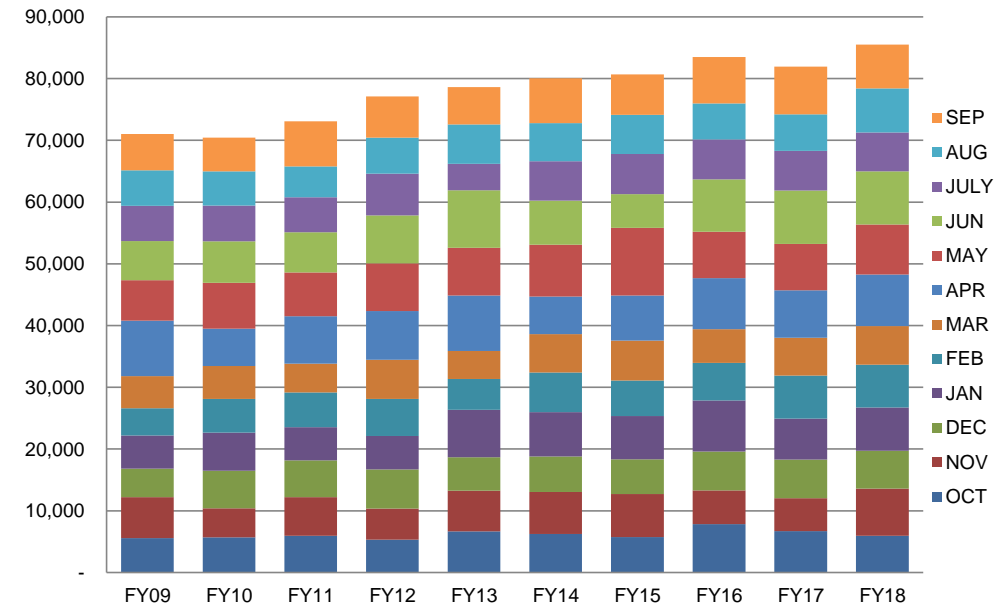


	FY09	FY10	FY11	FY12	FY13	FY14	FY15	FY16	FY17	FY18	CHANGE	%	
OCT	\$ 5,586.39	\$ 5,684.73	\$ 5,944.79	\$ 5,338.02	\$ 6,675.58	\$ 6,240.07	\$ 5,732.28	\$ 7,856.73	\$ 6,708.82	\$ 5,966.45	\$ (742.37)	-11.07%	OCT
NOV	\$ 6,634.06	\$ 4,702.43	\$ 6,249.85	\$ 5,006.52	\$ 6,583.47	\$ 6,812.99	\$ 6,957.32	\$ 5,421.51	\$ 5,342.88	\$ 7,625.30	\$ 2,282.42	42.72%	NOV
DEC	\$ 4,595.39	\$ 6,087.17	\$ 5,970.82	\$ 6,368.28	\$ 5,395.34	\$ 5,762.40	\$ 5,654.45	\$ 6,312.74	\$ 6,244.85	\$ 6,140.40	\$ (104.45)	-1.67%	DEC
JAN	\$ 5,378.01	\$ 6,188.35	\$ 5,365.97	\$ 5,404.30	\$ 7,696.90	\$ 7,156.49	\$ 6,982.76	\$ 8,270.10	\$ 6,629.29	\$ 6,989.00	\$ 359.71	5.43%	JAN
FEB	\$ 4,402.22	\$ 5,463.11	\$ 5,652.77	\$ 6,018.52	\$ 4,996.89	\$ 6,411.83	\$ 5,791.99	\$ 6,104.47	\$ 6,966.20	\$ 6,956.32	\$ (9.88)	-0.14%	FEB
MAR	\$ 5,204.40	\$ 5,330.16	\$ 4,649.07	\$ 6,303.94	\$ 4,552.26	\$ 6,219.23	\$ 6,438.11	\$ 5,425.51	\$ 6,116.57	\$ 6,217.45	\$ 100.88	1.65%	MAR
APR	\$ 9,015.86	\$ 6,023.19	\$ 7,688.56	\$ 7,926.65	\$ 8,973.06	\$ 6,105.43	\$ 7,310.08	\$ 8,300.34	\$ 7,717.11	\$ 8,368.71	\$ 651.60	8.44%	APR
MAY	\$ 6,531.30	\$ 7,430.72	\$ 7,099.34	\$ 7,727.20	\$ 7,736.92	\$ 8,403.46	\$ 10,970.91	\$ 7,512.51	\$ 7,491.24	\$ 8,097.62	\$ 606.38	8.09%	MAY
JUN	\$ 6,352.60	\$ 6,736.67	\$ 6,504.77	\$ 7,755.17	\$ 9,314.58	\$ 7,110.79	\$ 5,456.41	\$ 8,483.20	\$ 8,659.49	\$ 8,612.02	\$ (47.47)	-0.55%	JUN
JULY	\$ 5,701.13	\$ 5,789.28	\$ 5,635.82	\$ 6,740.99	\$ 4,267.49	\$ 6,401.45	\$ 6,492.16	\$ 6,440.01	\$ 6,404.47	\$ 6,325.80	\$ (78.67)	-1.23%	JULY
AUG	\$ 5,728.28	\$ 5,541.56	\$ 5,029.06	\$ 5,861.17	\$ 6,401.94	\$ 6,157.45	\$ 6,363.07	\$ 5,833.11	\$ 5,921.70	\$ 7,117.29	\$ 1,195.59	20.19%	AUG
SEP	\$ 5,910.87	\$ 5,458.68	\$ 7,271.82	\$ 6,666.26	\$ 6,048.49	\$ 7,266.22	\$ 6,548.28	\$ 7,525.29	\$ 7,724.85	\$ 7,100.63	\$ (624.22)	-8.08%	SEP
<b>TOTAL</b>	<b>\$71,040.51</b>	<b>\$70,436.05</b>	<b>\$73,062.64</b>	<b>\$77,117.02</b>	<b>\$78,642.92</b>	<b>\$80,047.81</b>	<b>\$80,697.82</b>	<b>\$83,485.52</b>	<b>\$81,927.47</b>	<b>\$85,516.99</b>	<b>\$ 3,589.52</b>	<b>4.38%</b>	<b>TOTAL</b>

**VEHICLE FEE INCREASES TEN YEAR FISCAL**



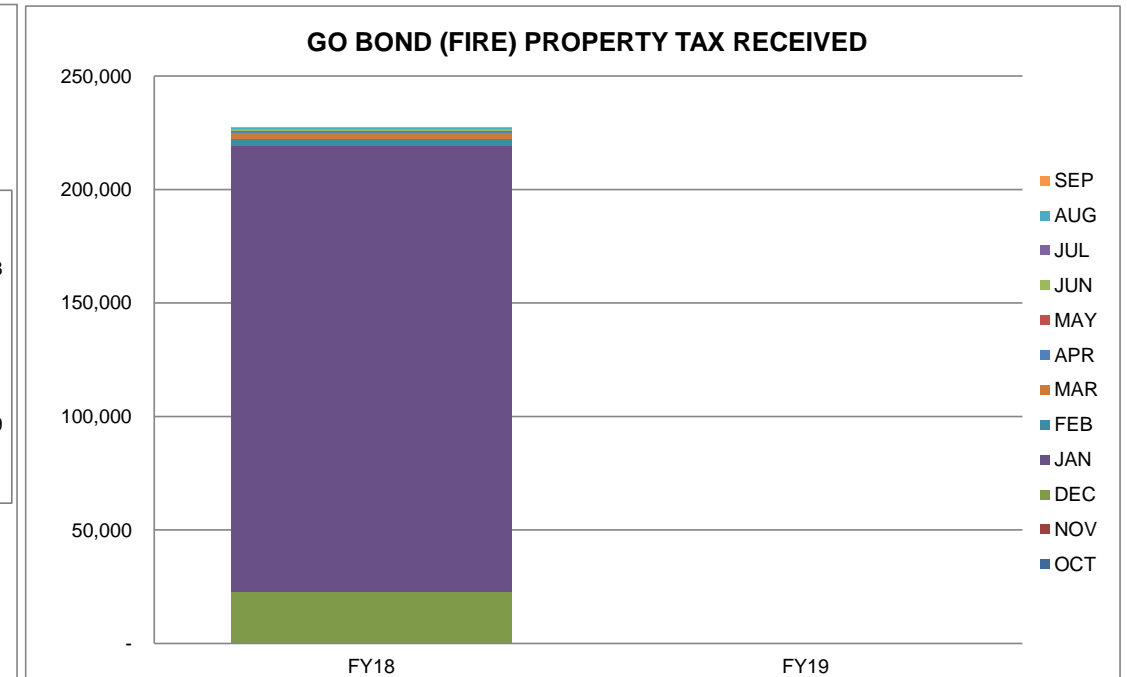
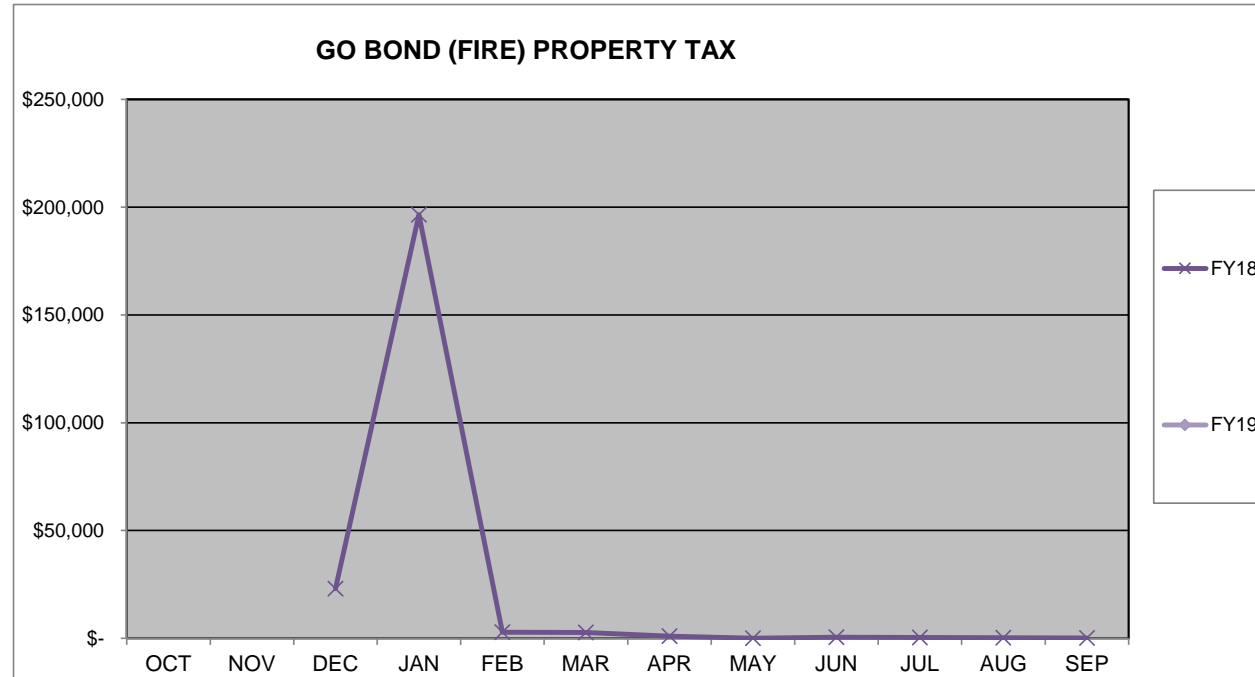
**VEHICLE FEE INCREASES TAXES RECEIVED**



**CITY OF WARRENSBURG  
GO BOND (FIRE) PROPERTY TAX**



	FY18	FY19	CHANGE	%	
OCT					OCT
NOV					NOV
DEC	\$ 23,041.90				DEC
JAN	\$ 196,499.72				JAN
FEB	\$ 2,785.23				FEB
MAR	\$ 2,697.95				MAR
APR	\$ 941.97				APR
MAY	\$ 41.39				MAY
JUN	\$ 539.20				JUN
JUL	\$ 345.88				JUL
AUG	\$ 214.68				AUG
SEP	\$ 165.72				SEP
<b>TOTAL</b>	<b>\$227,273.64</b>	<b>\$ -</b>	<b>\$ -</b>	<b>0.00%</b>	<b>TOTAL</b>

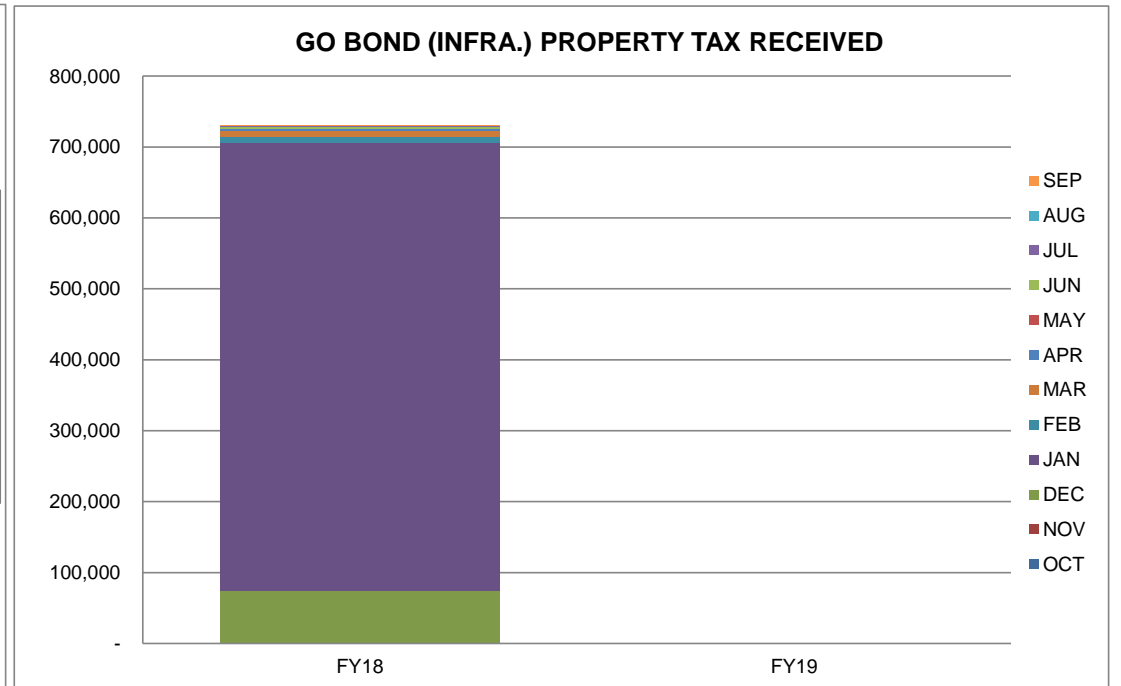
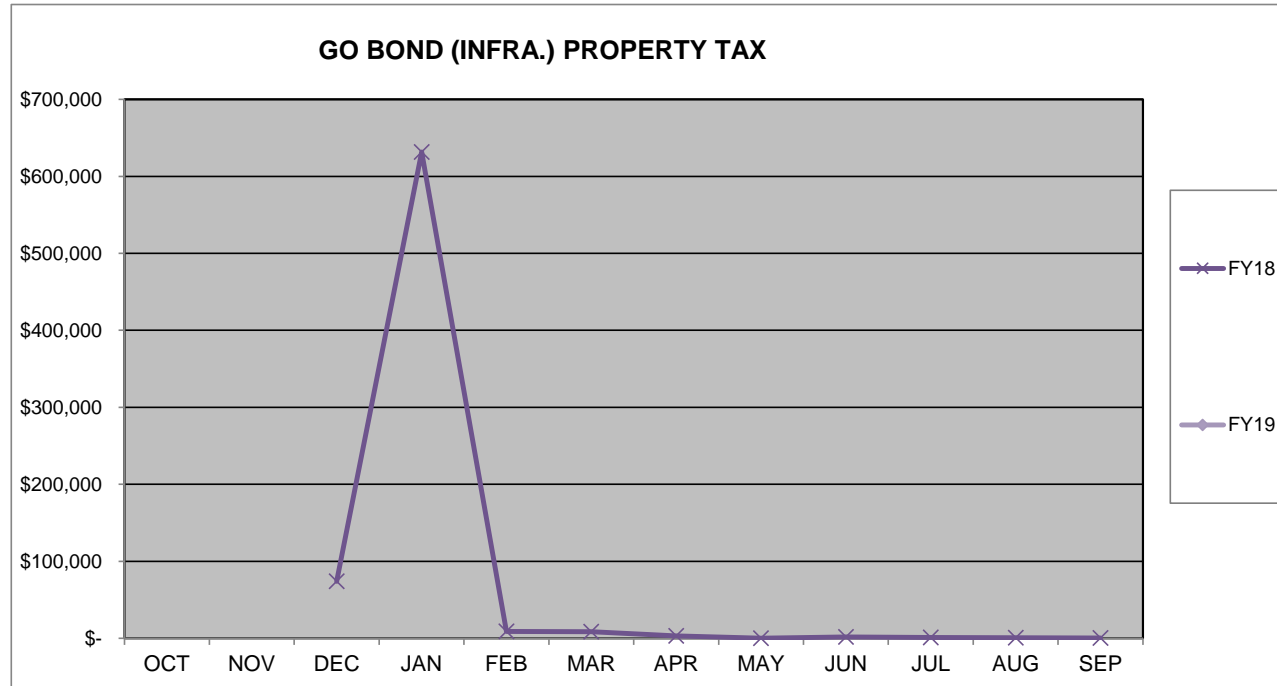




# CITY OF WARRENSBURG GO BOND (INFRA.) PROPERTY TAX



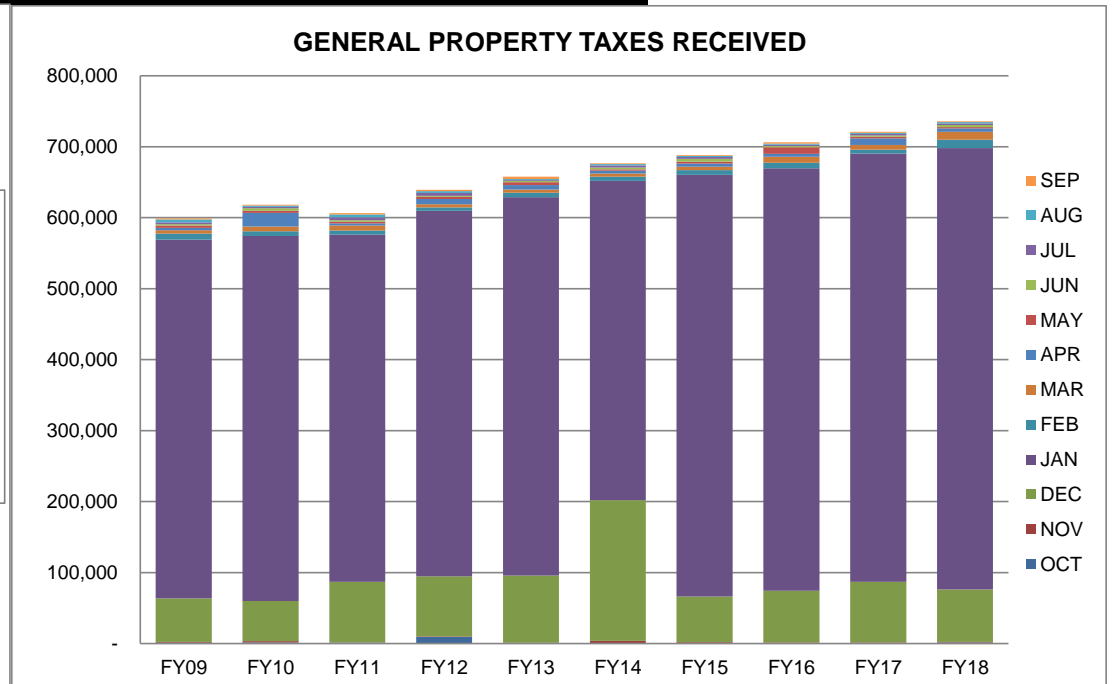
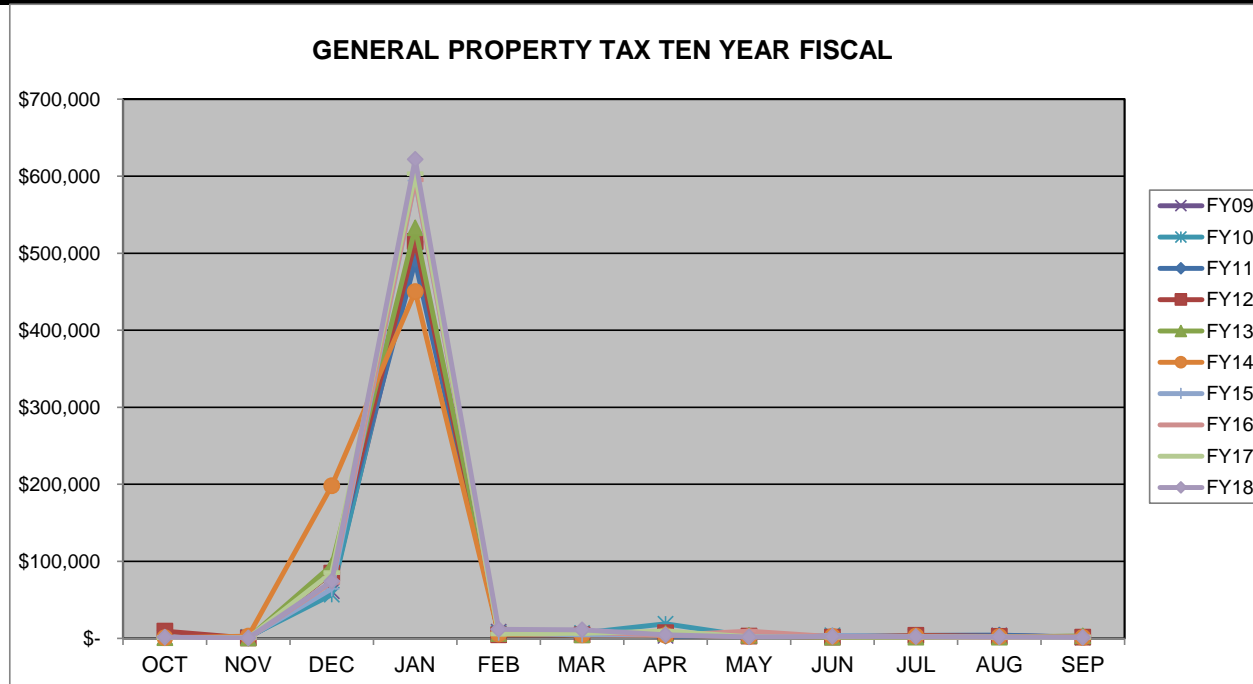
	FY18	FY19	CHANGE	%	
OCT					OCT
NOV					NOV
DEC	\$ 74,063.25				DEC
JAN	\$ 631,606.26				JAN
FEB	\$ 8,952.51				FEB
MAR	\$ 8,671.97				MAR
APR	\$ 3,027.78				APR
MAY	\$ 133.03				MAY
JUN	\$ 1,733.13				JUN
JUL	\$ 1,111.74				JUL
AUG	\$ 690.05				AUG
SEP	\$ 532.67				SEP
<b>TOTAL</b>	<b>\$ 730,522.39</b>	<b>\$ -</b>	<b>\$ -</b>	<b>0.00%</b>	<b>TOTAL</b>



**CITY OF WARRENSBURG**  
**\*GENERAL PROPERTY TAX TEN YEAR COMPARISON**



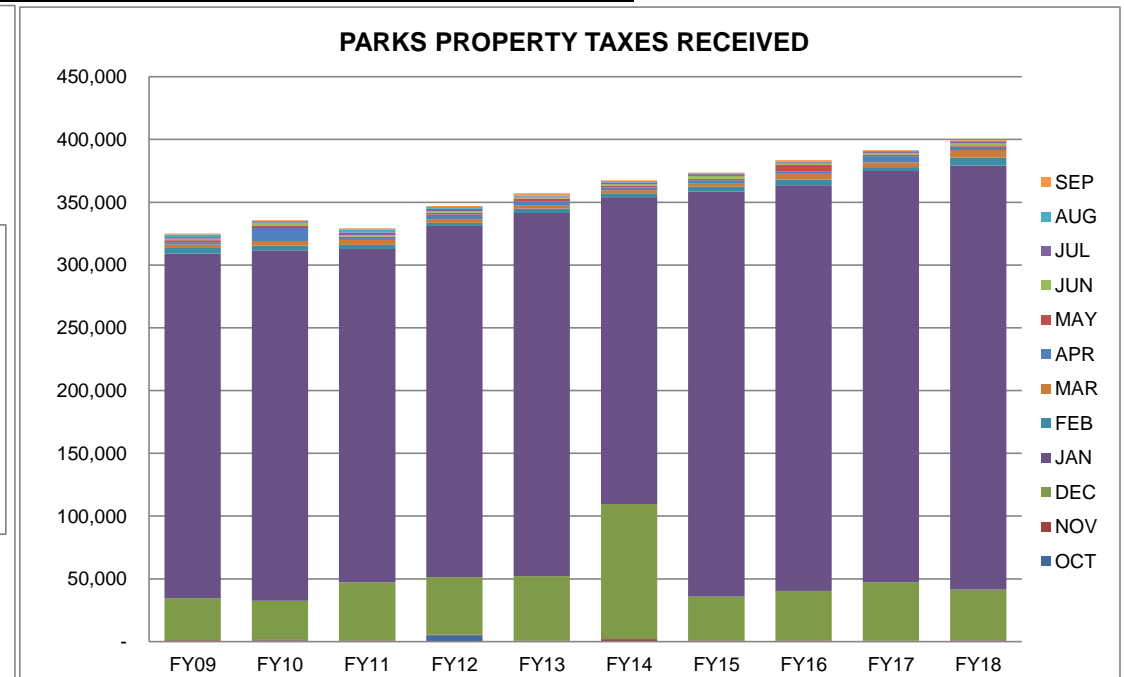
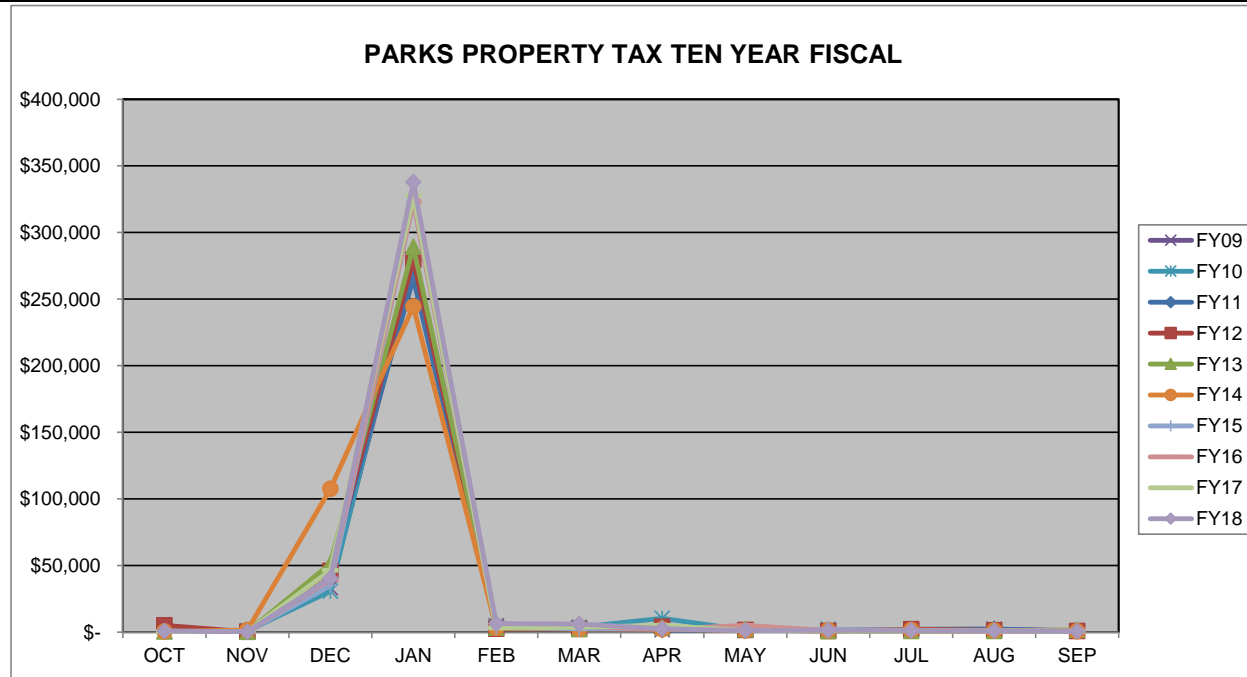
	FY09	FY10	FY11	FY12	FY13	FY14	FY15	FY16	FY17	FY18	CHANGE	%	
OCT	\$ 1,062.96	\$ 1,656.74	\$ 1,156.13	\$ 9,532.02	\$ 776.01	\$ 809.82	\$ 990.35	\$ 1,024.42	\$ 760.94	\$ 1,579.21	\$ 818.27	107.53%	OCT
NOV	\$ 1,285.76	\$ 1,811.80	\$ 482.89	\$ 427.55	\$ 549.09	\$ 2,830.07	\$ 937.38	\$ 571.55	\$ 813.35	\$ 579.41	\$ (233.94)	-28.76%	NOV
DEC	\$ 61,293.55	\$ 56,660.87	\$ 85,447.12	\$ 84,670.94	\$ 94,708.78	\$ 198,157.94	\$ 64,247.08	\$ 72,762.67	\$ 85,480.23	\$ 74,141.22	\$ (11,339.01)	-13.27%	DEC
JAN	\$ 505,403.33	\$ 513,991.48	\$ 489,049.51	\$ 515,110.20	\$ 532,822.78	\$ 450,191.10	\$ 594,229.10	\$ 595,144.80	\$ 603,143.74	\$ 621,829.90	\$ 18,686.16	3.10%	JAN
FEB	\$ 8,541.94	\$ 6,732.12	\$ 5,866.18	\$ 4,777.03	\$ 6,310.47	\$ 5,681.97	\$ 6,671.45	\$ 8,089.75	\$ 5,730.71	\$ 11,708.78	\$ 5,978.07	104.32%	FEB
MAR	\$ 4,962.73	\$ 6,913.46	\$ 7,187.86	\$ 4,525.00	\$ 4,450.08	\$ 4,578.32	\$ 4,720.75	\$ 8,372.44	\$ 6,756.24	\$ 11,168.06	\$ 4,411.82	65.30%	MAR
APR	\$ 3,227.67	\$ 18,988.64	\$ 2,867.51	\$ 7,430.26	\$ 6,402.69	\$ 3,985.28	\$ 4,680.68	\$ 3,889.93	\$ 9,238.64	\$ 4,779.23	\$ (4,459.41)	-48.27%	APR
MAY	\$ 3,153.74	\$ 2,943.91	\$ 2,243.00	\$ 2,934.38	\$ 4,088.27	\$ 2,103.19	\$ 2,443.45	\$ 9,241.41	\$ 2,264.39	\$ 2,050.31	\$ (214.08)	-9.45%	MAY
JUN	\$ 2,173.46	\$ 3,899.31	\$ 2,332.88	\$ 1,631.10	\$ 1,647.74	\$ 2,499.61	\$ 3,952.76	\$ 2,092.34	\$ 1,853.72	\$ 2,721.94	\$ 868.22	46.84%	JUN
JUL	\$ 2,274.80	\$ 1,737.76	\$ 3,888.54	\$ 4,047.19	\$ 1,440.03	\$ 2,744.17	\$ 2,658.56	\$ 1,901.86	\$ 1,965.93	\$ 2,285.08	\$ 319.15	16.23%	JUL
AUG	\$ 4,048.09	\$ 1,729.50	\$ 4,239.83	\$ 2,551.33	\$ 1,408.73	\$ 2,099.88	\$ 1,354.56	\$ 1,207.55	\$ 1,743.41	\$ 1,745.69	\$ 2.28	0.13%	AUG
SEP	\$ 1,521.80	\$ 1,080.26	\$ 1,685.23	\$ 1,607.13	\$ 3,096.55	\$ 1,065.00	\$ 1,102.86	\$ 2,071.15	\$ 1,200.78	\$ 1,288.94	\$ 88.16	7.34%	SEP
<b>TOTAL</b>	<b>\$598,949.83</b>	<b>\$618,145.85</b>	<b>\$606,446.68</b>	<b>\$639,244.13</b>	<b>\$657,701.22</b>	<b>\$676,746.35</b>	<b>\$687,988.98</b>	<b>\$706,369.87</b>	<b>\$720,952.08</b>	<b>\$735,877.77</b>	<b>\$ 14,925.69</b>	<b>2.07%</b>	<b>TOTAL</b>



**CITY OF WARRENSBURG**  
**\*PARKS PROPERTY TAX TEN YEAR COMPARISON**



	FY09	FY10	FY11	FY12	FY13	FY14	FY15	FY16	FY17	FY18	CHANGE	%	
OCT	\$ 577.16	\$ 899.56	\$ 627.74	\$ 5,175.64	\$ 421.35	\$ 439.71	\$ 537.89	\$ 556.38	\$ 413.29	\$ 857.71	\$ 444.42	107.53%	OCT
NOV	\$ 698.14	\$ 983.75	\$ 262.20	\$ 232.15	\$ 298.14	\$ 1,536.65	\$ 509.12	\$ 310.43	\$ 441.75	\$ 314.70	\$ (127.05)	-28.76%	NOV
DEC	\$ 33,280.66	\$ 30,765.25	\$ 46,395.38	\$ 45,973.93	\$ 51,424.19	\$107,594.17	\$ 34,894.29	\$ 39,519.33	\$ 46,426.59	\$ 40,276.27	\$ (6,150.32)	-13.25%	DEC
JAN	\$274,419.73	\$279,082.87	\$265,540.07	\$279,690.29	\$289,307.72	\$244,510.74	\$322,741.58	\$323,238.93	\$327,583.36	\$337,801.16	\$10,217.80	3.12%	JAN
FEB	\$ 4,638.03	\$ 3,655.34	\$ 3,185.17	\$ 2,593.78	\$ 3,426.41	\$ 3,086.04	\$ 3,623.44	\$ 4,393.75	\$ 3,112.49	\$ 6,360.64	\$ 3,248.15	104.36%	FEB
MAR	\$ 2,694.63	\$ 3,753.82	\$ 3,902.80	\$ 2,456.94	\$ 2,416.27	\$ 2,486.61	\$ 2,563.97	\$ 4,547.29	\$ 3,669.50	\$ 6,066.90	\$ 2,397.40	65.33%	MAR
APR	\$ 1,752.54	\$ 10,310.29	\$ 1,556.99	\$ 4,034.42	\$ 3,476.48	\$ 2,164.50	\$ 2,542.21	\$ 2,112.72	\$ 5,017.75	\$ 2,596.26	\$ (2,421.49)	-48.26%	APR
MAY	\$ 1,712.40	\$ 1,598.46	\$ 1,217.88	\$ 1,593.29	\$ 2,219.83	\$ 1,142.29	\$ 1,327.10	\$ 5,019.25	\$ 1,229.84	\$ 1,113.80	\$ (116.04)	-9.44%	MAY
JUN	\$ 1,180.13	\$ 2,117.21	\$ 1,266.68	\$ 885.64	\$ 894.68	\$ 1,357.60	\$ 2,146.86	\$ 1,136.40	\$ 1,006.79	\$ 1,478.65	\$ 471.86	46.87%	JUN
JUL	\$ 1,235.15	\$ 943.55	\$ 2,111.37	\$ 2,197.51	\$ 781.89	\$ 1,490.44	\$ 1,443.93	\$ 1,032.94	\$ 1,067.76	\$ 1,241.34	\$ 173.58	16.26%	JUL
AUG	\$ 2,198.01	\$ 939.07	\$ 2,302.10	\$ 1,385.31	\$ 764.89	\$ 1,140.50	\$ 735.70	\$ 655.85	\$ 946.90	\$ 948.33	\$ 1.43	0.15%	AUG
SEP	\$ 826.30	\$ 586.54	\$ 915.04	\$ 872.63	\$ 1,681.35	\$ 578.43	\$ 598.99	\$ 1,124.89	\$ 652.17	\$ 700.21	\$ 48.04	7.37%	SEP
<b>TOTAL</b>	<b>\$325,212.88</b>	<b>\$335,635.71</b>	<b>\$329,283.42</b>	<b>\$347,091.53</b>	<b>\$357,113.20</b>	<b>\$367,527.68</b>	<b>\$373,665.08</b>	<b>\$383,648.16</b>	<b>\$391,568.19</b>	<b>\$399,755.97</b>	<b>\$ 8,187.78</b>	<b>2.09%</b>	<b>TOTAL</b>

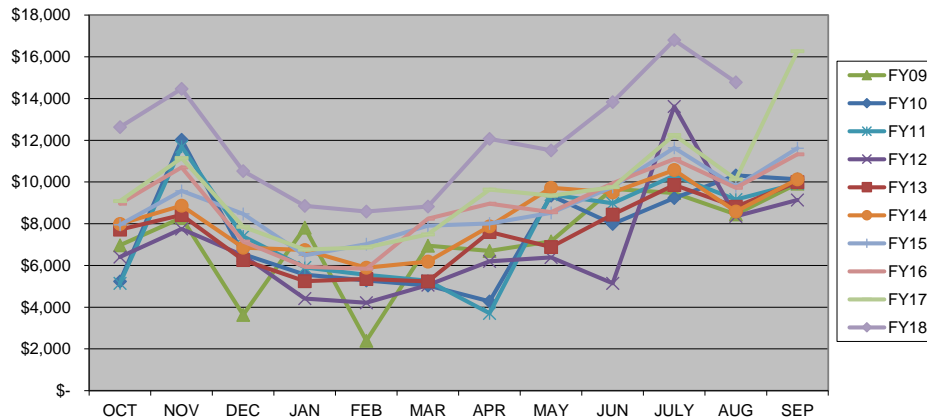


## CITY OF WARRENSBURG LODGING TAX TEN YEAR COMPARISON



	FY09	FY10	FY11	FY12	FY13	FY14	FY15	FY16	FY17	FY18	CHANGE	%	
OCT	\$6,968.91	\$5,240.62	\$ 5,146.91	\$ 6,406.60	\$ 7,723.43	\$ 7,986.37	\$ 7,944.91	\$ 8,961.97	\$ 9,085.49	\$ 12,636.49	\$ 3,551.00	39.08%	OCT
NOV	\$8,287.40	\$12,029.25	\$11,691.14	\$ 7,756.13	\$ 8,415.18	\$ 8,871.14	\$ 9,579.17	\$ 10,703.06	\$ 11,154.30	\$ 14,468.77	\$ 3,314.47	29.71%	NOV
DEC	\$3,635.85	\$6,538.84	\$ 7,392.74	\$ 6,481.50	\$ 6,262.96	\$ 6,855.56	\$ 8,466.41	\$ 7,148.61	\$ 7,853.81	\$ 10,528.83	\$ 2,675.02	34.06%	DEC
JAN	\$7,818.81	\$5,563.32	\$ 5,910.17	\$ 4,413.01	\$ 5,252.02	\$ 6,743.77	\$ 6,486.34	\$ 5,933.36	\$ 6,761.43	\$ 8,856.81	\$ 2,095.38	30.99%	JAN
FEB	\$2,393.59	\$5,274.90	\$ 5,549.30	\$ 4,213.85	\$ 5,350.15	\$ 5,892.83	\$ 7,022.53	\$ 5,841.01	\$ 6,859.50	\$ 8,585.46	\$ 1,725.96	25.16%	FEB
MAR	\$6,948.58	\$5,041.05	\$ 5,270.31	\$ 5,062.21	\$ 5,233.70	\$ 6,191.44	\$ 7,906.67	\$ 8,244.96	\$ 7,494.34	\$ 8,820.73	\$ 1,326.39	17.70%	MAR
APR	\$6,698.42	\$4,281.03	\$ 3,707.64	\$ 6,193.02	\$ 7,607.40	\$ 7,872.30	\$ 8,006.72	\$ 8,960.32	\$ 9,642.68	\$ 12,066.80	\$ 2,424.12	25.14%	APR
MAY	\$7,161.26	\$9,343.60	\$ 9,399.92	\$ 6,382.92	\$ 6,881.96	\$ 9,724.76	\$ 8,523.28	\$ 8,549.17	\$ 9,345.76	\$ 11,512.11	\$ 2,166.35	23.18%	MAY
JUN	\$9,665.51	\$7,988.99	\$ 8,986.65	\$ 5,146.29	\$ 8,443.39	\$ 9,506.14	\$ 9,766.52	\$ 9,943.30	\$ 9,755.36	\$ 13,826.67	\$ 4,071.31	41.73%	JUN
JULY	\$9,470.33	\$9,227.35	\$10,307.07	\$13,618.72	\$ 9,862.72	\$10,571.90	\$ 11,636.91	\$ 11,094.25	\$ 12,252.02	\$ 16,799.73	\$ 4,547.71	37.12%	JULY
AUG	\$8,446.01	\$10,313.45	\$ 9,160.62	\$ 8,357.75	\$ 8,809.59	\$ 8,581.40	\$ 9,787.08	\$ 9,724.77	\$ 10,131.03	\$ 14,783.69	\$ 4,652.66	45.92%	AUG
SEP	\$9,921.37	\$10,133.74	\$ 9,927.77	\$ 9,133.46	\$ 9,995.08	\$10,130.43	\$ 11,619.68	\$ 11,328.39	\$ 16,271.16				SEP
<b>TOTAL</b>	<b>\$87,416.04</b>	<b>\$90,976.14</b>	<b>\$92,450.24</b>	<b>\$83,165.46</b>	<b>\$89,837.58</b>	<b>\$98,928.04</b>	<b>\$106,746.22</b>	<b>\$106,433.17</b>	<b>\$116,606.88</b>	<b>\$132,886.09</b>	<b>\$32,550.37</b>	<b>32.44%</b>	<b>TOTAL</b>

**LODGING TAX TEN YEAR FISCAL**



**LODGING TAX TAXES RECEIVED**

